

ALIGN SERIES **SESSION**



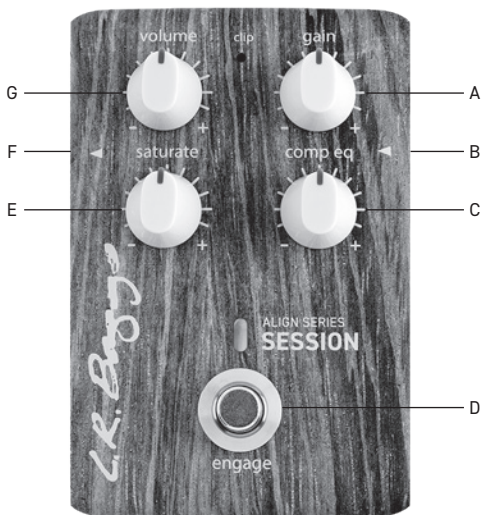
USER'S GUIDE

INTRODUCTION

Inspired by the LR Baggs Handcrafted Video Sessions and our experience in some of Nashville's great studios, the Align Session brings our signature studio sound to your live rig. Session circuitry enhances your acoustic pickup and imparts the rich sonic character that you'd expect from an experienced audio engineer using some of the world's finest studio gear. We've captured this studio magic and put it into a compact, easy-to-use acoustic pedal that will transform your live sound.

GETTING STARTED

1. Power the Session with a 9V power supply or a 9V battery.
2. Plug your guitar into the ¼" input to activate the Session (upper **right hand** side) and a cable into the ¼" output (upper **left hand** side).
3. Adjust the gain control using the clip light. Read section A in this manual for setting your gain to the appropriate level.
4. Plug the ¼" cable into your amp, PA, or next pedal in the signal chain and experiment with the Session.



TOP FEATURES

A. GAIN

Setting the gain is one of the most important keys to achieving optimum sound quality and signal-to-noise ratio. If you have a volume control on your guitar, make sure it is turned all the way up before setting the gain. Begin with the gain control in the counter-clockwise position. Turn the control clockwise as you strum the guitar until the clip light flashes slightly at your loudest

playing level. If it flashes too frequently, the input is clipping and you may experience unwanted distortion.

B. INSTRUMENT INPUT

The ¼" input is an unbalanced (mono), all-discrete input. Plugging into the input will activate the Session, therefore, unplugging will turn the system off.

C. COMP EQ

The Session features 3 narrowly focused bands of compression for taming common problematic frequencies and enhancing the voice of your guitar. The low, mid, and high frequency compressors are essentially "touch-sensitive" EQs that respond in real-time to your dynamics. The harder you strum, the more they compress and vice versa. When the knob is in the counter-clockwise position, the effect is completely off. Turn the control clockwise and apply to taste.

D. ENGAGE

Press the footswitch to engage the tone shaping tools. When the light is on, all of the controls of the Session are engaged. When the light is off, the whole pedal is true bypassed.

E. SATURATE

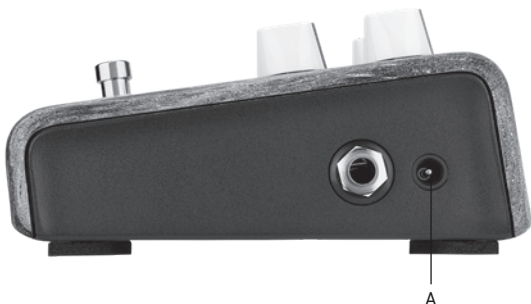
The Session's analog saturation is voiced specifically for the acoustic guitar. Engage the effect to add warmth, dimension, and pleasing harmonic content while smoothing your signal for an enhanced, post-processed mix. Turn the control clockwise to saturate the signal.

F. ¼" OUTPUT

The ¼" output is an unbalanced, line level output. You can plug into any amp or device that has a ¼" input. We recommend running into any other LR Baggs Align pedals, DI's, or the Synapse Personal PA System.

G. VOLUME

The master volume affects the ¼" output.



SIDE FEATURES

A. DC INPUT

The DC power input is designed for a standard 2mm plug commonly used with effects pedals and "floor-box" products. Most power supplies or multi-power devices designed for musical products may be used. 9VDC recommended with a 12VDC maximum. Plugging in a power supply will activate the Session.

SPECIFICATIONS

1/4" INPUT

Input Impedance: 5.1 Megohms

Preamp Gain: -14dB to +20dB

Input Level: -25dBv to +2dBv (0.056Vrms to 1.273Vrms)

LINE OUTPUT

Output Level: -5dBv (0.566Vrms) Unbalanced

Output Impedance: 220 Ohms

POWER

DC Power Consumption: 24mW Max at 9V

DC Current Draw: 2.5mA

Voltage Range: 7.5VDC – 12VDC

Power Supply: 9VDC with 100mA minimum

***IMPORTANT:** polarity Pos (+) on outside, Gnd (-) on center

9V Battery Life: 200 hours

Signal to Noise: 90dB, Unweighted

PHYSICAL CHARACTERISTICS

0.85 Lbs, 5" Length x 3.25" Width x 2" Depth

These specifications may change without notice.

PRODUCT REGISTRATION & WARRANTY INFORMATION

PRODUCT REGISTRATION

Register the Align Session online at:

lrbaggs.com/register

LIMITED WARRANTY

L.R. Baggs warrants to the using purchaser that this product shall be free of defects in workmanship and materials under normal and proper use for a period of one year. If you experience problems with the Align Session, please contact your dealer.

To learn more about this product, please visit:

lrbaggs.com/align



C.R. Baggs

483 N. Frontage Road, Nipomo, CA 93444

ph: 805.929.3545

lrbaggs.com