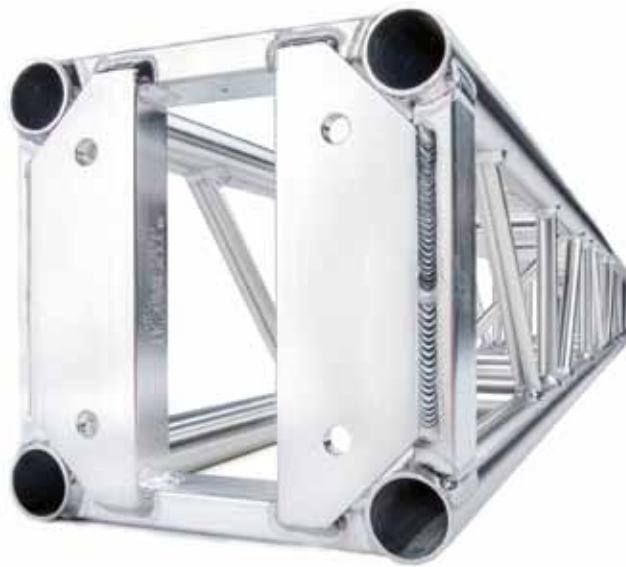


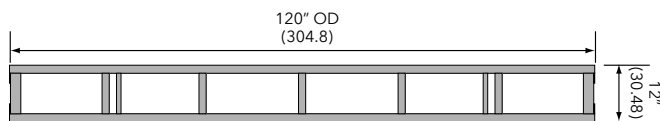
Box truss

Light duty truss 12 x 12 plated

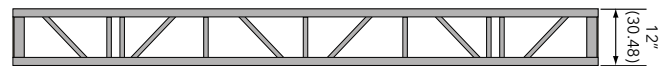
- › Light duty truss 12 x 12 plated
- › Standard lengths are 10', 8' and 5'
- › Custom lengths available upon request
- › Equipped with bolts
- › Main chords are 2" OD x 1/8" aluminum
- › Diagonals are 1" OD x 1/8" aluminum
- › Fabricated by AWS / SFL certified welders



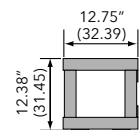
Plan Views



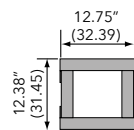
Plan



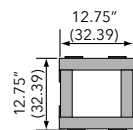
Elevation



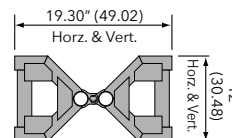
2-Way Corner Block



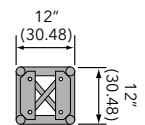
3-Way Corner Block



4-Way Corner Block



HORIZONTAL VARIABLE CORNER



End View

Loading chart

Span ft (mtrs)	Maximum allowable uniform loads			Maximum allowable point loads					
	Load lbs/ft	Load lbs (kgs)	Max Defl. in.	center point		third point		quarter point	
				Load lbs (kgs)	Max Defl. in.	Load lbs (kgs)	Max Defl. in.	Load lbs (kgs)	Max Defl. in.
10 (3.05)	446	4460 (2023)	0.14	2231 (1012)	0.11	1673 (759)	0.14	1116 (506)	0.13
20 (6.09)	106	2120 (962)	0.54	1063 (482)	0.44	797 (362)	0.56	531 (241)	0.52
30 (9.14)	43	1290 (585)	1.22	650 (295)	1.01	487 (221)	1.25	325 (147)	1.17
40 (12.21)	21	840 (381)	2.16	426 (193)	1.85	319 (145)	2.21	213 (97)	2.10

Note: Deflections reported in the tables on the left are the maximum expected for full loadings (indoors only). All loads are based on 10' (3.05 m) sections. Other section lengths are available. Load tables are reprinted from engineering reports developed by Parkhill, Smith & Cooper, Inc., structural engineers, and apply to truss fabricated after December 1989.

Light Duty truss 12 x 12 plated Connections are SINGLE sets of bolts

Product Description	Item Code	Weight lbs (kgs)
5 FT LIGHT DUTY PLATED TRUSS	TC 1212-060B	36 (16)
8 FT LIGHT DUTY PLATED TRUSS	TC 1212-096B	51 (23)
10 FT LIGHT DUTY PLATED TRUSS	TC 1212-120B	61 (28)
LIGHT DUTY PLATED 2-WAY CORNER BLOCK	TC 1212-C2B	16 (7)
LIGHT DUTY PLATED 3-WAY CORNER BLOCK	TC 1212-C3B	20 (9)
LIGHT DUTY PLATED 4-WAY CORNER BLOCK	TC 1212-C4B	22 (10)
LIGHT DUTY PLATED 5-WAY CORNER BLOCK	TC 1212-C5B	26 (12)
LIGHT DUTY PLATED 6-WAY CORNER BLOCK	TC 1212-C6B	28 (13)
LIGHT DUTY PLATED HORIZ. ARTICULATING BLOCK	TC 1212-AHB	33 (15)
LIGHT DUTY PLATED VERT. ARTICULATING BLOCK	TC 1212-AVB	33 (15)
LIGHT DUTY PLATED VERT. HORIZ. BLOCK	TC 1212-VHB	33 (15)
LIGHT DUTY PLATED VARIABLE VERT. BLOCK	TC 1212-VVB	33 (15)