



StudioLive™ gets Smart®



NOW SHIPPING WITH
UNIVERSAL CONTROL 1.6

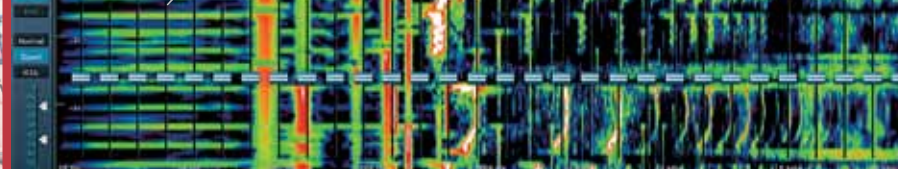
What is Smart® Spectra™?

Smaart Spectra for StudioLive Phase 1 is a subset of Rational Acoustics' highly-acclaimed Smaart v7 measurement and analysis program. It provides dynamic, real-time visualization of frequency distribution that's simply not possible with traditional metering.

This allows you to not only measure the "spectral signature" of the input signal, but also pin-point and correct feedback and see the continuous sound level in a room.

Smaart Spectrograph and RTA are exclusive to PreSonus' StudioLive.

What is Smart® Spectrograph?

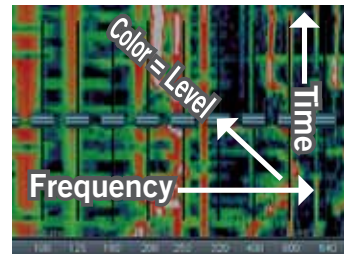


Many audio signals that are encountered in the field are highly dynamic: musical signals, speech, and even environmental noise contain significant changes in spectral content as a function of time.

While the classic RTA spectrum display is useful for viewing the time-averaged spectral content of a signal, a "3D" display technique is required to

enable the analysis of the incoming frequency spectrum over time.

The Spectrograph fulfills this requirement, providing a three-dimensional view of the incoming signal: energy versus frequency versus time. The spectrograph can be thought of as a record of multiple RTA spectrums taken over time, with color representing amplitude.



Using this function- continued on next page

Who is Rational Acoustics?

Rational Acoustics was launched in 2008 with the specific purposes of ensuring the continued development of the Smaart measurement platform and substantially enhancing the educational efforts and support that back it. In the mid 1990s, the

laptop computer finally became powerful enough to run the mathematical algorithms lurking in those expensive hardware / DSP-based dual-channel analyzers. In 1995, Smaart was born.

Over the next 17 years, Smaart software continually developed and evolved,

leveraging the growth of computer-processing power and the refinement of audio gear.

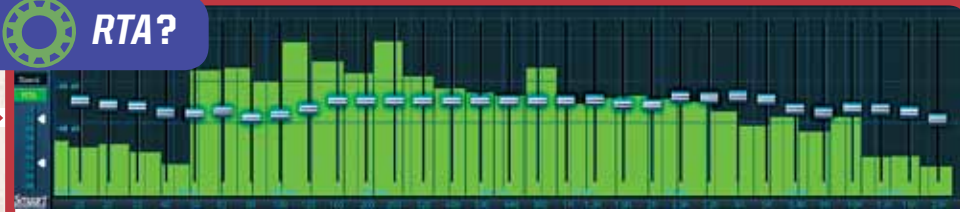
Rational Acoustics has expanded their collective experience, understanding, and techniques for applying these measurement technologies to the sound-reinforcement industry.

rational acoustics

StudioLive™ gets Smart®

PHASE ONE

What is Smart RTA?



The real-time analyzer, or RTA, is a familiar tool to audio professionals. By adjusting the scale, a user is able to refine their measurement's resolution and responsiveness to fit the task at hand.

Smart RTA can provide you with a view of the long-term spectrum of

a signal. A traditional measure of the "spectral signature" of the input signal, Smart RTA's 1/3rd-octave display shows an average of a musical performance over time.

This technique is also useful for capturing a stable measure of the continuous noise level in a room.

Smart Spectrograph



ality, the spectral content of the input signal is recorded as it changes in time, allowing the user to view and analyze time-varying trends in the input signal.

In Smart, this graph is fundamentally governed by setting the threshold level at which data begins to appear on the graph.

When a frequency band in the spectrum is over the lower threshold, it shows up on the plot, starting with a dark blue color at lower levels, through green, yellow, orange and red with higher level – eventually showing up as white if the level reaches or exceeds the upper threshold.

How does Smart work with StudioLive?

Smart Spectrograph and RTA are built into the Graphic Equalizer (GEQ) screens of Virtual StudioLive (VSL), our mixer control system for Mac and Windows, which in turn is part of Universal Control 1.6.

Any time you access a StudioLive 16.0.2, 16.4.2 or

24.4.2 GEQ from inside VSL, you can put Smart to work.

That includes main outputs (for shaping overall PA output) and auxes (for ringing out feedback in individual floor wedge monitor mixes).



How do I adjust the Smart displays?

The key to creating a useful spectrograph is to set the dynamic range for the display.

Set the range too wide and the display loses definition, and important features may

get lost. Set it too narrow or the lower threshold too high and data might get missed altogether.

One of the powerful new Smart v7 features incorporated into StudioLive is

the **Threshold Adjustment**. Handles on the left axis of RTA and Spectrograph plots. You can adjust spectrograph thresholds dynamically – in real time without having to reacquire the data.



What is Universal Control?

Please face the blackboard and take notes. You'll be tested on this.

UNIVERSAL CONTROL 1.6

Virtual StudioLive

PERMISSIONS



Universal Control is the PreSonus software that handles interaction between your Mac® or PC and your StudioLive mixer.

Built into Universal Control is Virtual StudioLive (VSL), our mixer remote-controller/editor/librarian, QMix™ for iPhone, and StudioLive Remote for iPad.

All GEQs are Smart

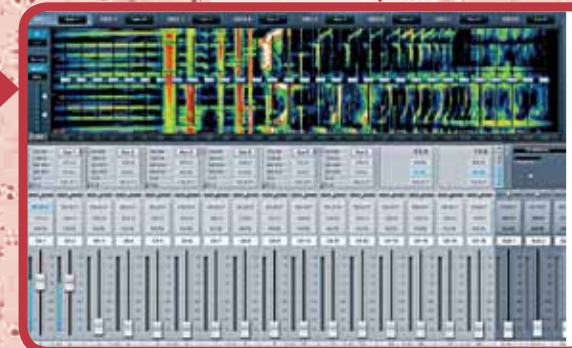
16.4.2: One stereo and 6 mono 31-band graphic equalizers. Stereo GEQ available on main outputs only; mono GEQs available on each of the 6 aux outputs only

24.4.2: Eight 31-band GEQs, assignable in four stereo pairs to main outputs, aux outputs, subgroup outputs, mono or stereo operation
16.0.2: One stereo 31-band graphic equalizer preset as a stereo pair on main outputs only

What else is new in Universal Control 1.6?

Universal Control 1.6 also updates the Windows and Mac drivers for StudioLive with greatly improved performance across the board on Windows systems. Concurrently we're releasing an update to SL Remote for iPad, which adds control over Talkback assignments, Talkback routing, and Scene recall.

UNIVERSAL CONTROL 1.6



Spectrograph or RTA are options when you select a GEQ in Virtual StudioLive.



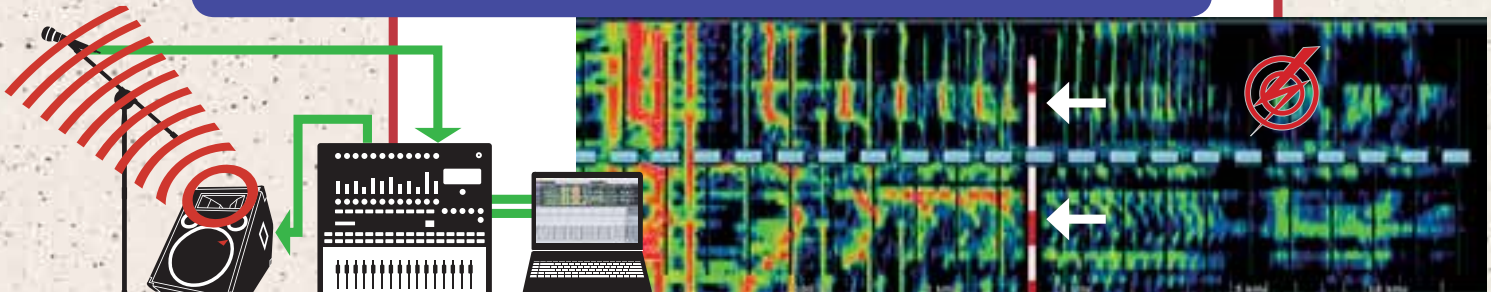
StudioLive™ gets Smart®

NOW SHIPPING WITH
UNIVERSAL CONTROL 1.6



Smart
SPECTROGRAPH
RTA
MEASUREMENT & ANALYSIS

Use case: Ringing out feedback with Smart Spectrograph



Because Smart Spectrograph is a continuous "stream" of real-time frequency information,

feedback is instantly visible in Smart Spectrograph as a vivid white/red "streak" moving up the display stream..



Just reduce the corresponding 31-band GEQ slider to instantly kill the feedback. It works with aux monitor

mixes and floor wedges. It works with PA mains. Far better than any other feedback suppression method.

Optimize system EQ

with Rational Acoustics' Smart Spectrograph & RTA (included)

Full laptop control

with Virtual StudioLive™ for Mac and PC (included)

Record multitrack

in just two mouse clicks with Capture™ (included)

Edit and produce

with Studio One Artist™ DAW (included)

iPhone® monitor mix control

with QMix™ (free download)

iPad® mix control

with SL Remote™ (free download)



©2012 PreSonus Audio Electronics. All rights reserved. StudioLive, Capture and QMix are trademarks of PreSonus Audio Electronics. Studio One is a trademark of PreSonus Software. Ltd. Smart is a registered trademark of Rational Acoustics. Windows is a registered trademark of Microsoft. iPad, iPhone and iPod are registered trademarks of Apple, Inc.