



ADAM AUDIO S-SERIES NEARFIELD / MIDFIELD ACTIVE MONITORS

These 2-way and 3-way active monitors use unique state-of-the-art materials and technology (including the A.R.T. folded ribbon tweeter) providing exceptional imaging and extraordinary sonic detail. The 2-way nearfields include the S1X, S2X monitors. The S1X is the most compact and can reproduce bass down to 40Hz with excellent linearity (+/-3dB). The S2X is designed for small to medium high-end recording/monitoring environments. They both feature the X-ART tweeter with class A/B amplifier and the HexaCone™-woofer with optimized magnet/voice-coil systems driven by PWM amplifiers. Both are ideally suited for use in 5.1 systems. The S3X-V and S4X-V active near/midfield monitors feature 1 woofer, 1 HexaCone® Midrange and the X-ART tweeter. They are designed for medium size control rooms, especially broadcast monitoring and allow long-time, non-fatiguing listening sessions. The S3X-H and S4X-H 3-way active near/midfield monitors feature 2 woofers, 1 midrange and an X-ART tweeter for center channel usage. Both woofers work within the same frequency range and radiate symmetrically to produce tight bass. All models (except the S1X) feature front panel input sensitivity and EQ controls, and can be optionally retrofitted with a 24bit/192kHz D/A converter featuring AES/EBU (XLR) and a S/PDIF (RCA) inputs as well as a R/L/Mono switch.

ITEM	DESCRIPTION	PRICE
S1X2-way active, 6" woofer, 40Hz-50kHz, 50W HF/200W LF (each)	1400.00
S2X2-way active, 7" woofer, 35Hz-50kHz, 50W HF/250W LF (each)	2250.00
S3X-V3-way active, 4.5" midrange, 9" woofer, 32Hz-50kHz, 50W HF/250W MF/250W LF (each)	2750.00
S3X-H3-way active, 4.5" midrange, 2x7" woofer, 32Hz-50kHz, 50W HF/250W MF/2x 250W LF (each)CALL
S4X-V3-way active, 6" midrange, 12" woofer, 28Hz-50kHz, 50W HF/250W MF/250W LF (each)CALL
S4X-H3-way active, 6" midrange, 2x9" woofer, 28Hz-50kHz, 50W HF/250W MF/2x 250W LF (each)CALL

ADAM AUDIO A3X NEARFIELD MONITOR The A3X is the smallest monitor offered by Adam, and is perfectly suited for all environments where space is limited. Two built-in 25 Watt amplifiers power the drivers directly. The front of the A3X sport dual ports for low frequency response down to 60Hz as well as power and gain controls. The rear panel includes balanced (XLR) jacks, unbalanced (RCA) jacks, and a tweeter gain. The Stereo link feature connects two A3X speakers allowing you to control the overall stereo volume of the system from either speakers gain control. The A3X features the X-ART tweeter (Accelerating Ribbon Technology) with a frequency response up to 50kHz.



ITEM	DESCRIPTION	PRICE
A3X5" 2-way active, 2x 25W, 60Hz-50kHz (each)	329.00

ADAM AUDIO A5X AND SUB7 STUDIO MONITORS

The A5X uses the ADAM X-ART Extended Accelerated Ribbon Technology (up to 50kHz) and features a 5" woofer consisting of a sandwich construction of carbon fiber/Rohacell/glass fiber. The built-in amplifiers with 2x 50W power control the drivers directly. They feature rear panel acoustic EQ controls, balanced XLR and unbalanced RCA inputs. A stereo link feature allows you to connect two A5X speakers to control the overall stereo volume of the system from either speaker's gain control. The Sub7 compliments the A5X with its compact design and extended low frequency reproduction down to 30Hz. It includes XLR and RCA inputs/outputs, acoustic fine tuning controls, and a wireless remote for adjusting the volume and crossover frequency.



ITEM	DESCRIPTION	PRICE
A5X5.5" active 2-way, 2x 50W, 50Hz-50kHz (each)	499.00
SUB77" active subwoofer, 140W, 32Hz-150Hz	600.00



ADAM AUDIO A7X AND SUB8 STUDIO MONITORS

The A7X matches the X-ART (Extended Accelerated Ribbon Technology - up to 50kHz) tweeter with a state of the art 7" woofer. The woofer has been redesigned with a much bigger voice coil (1.5") and is driven by an amplifier with twice the power compared to its predecessor. This combination produces an amazing sound and pressure levels with an almost distortion-free musical reproduction. Each driver has its own dedicated amplifier, 50W A/B amp for the X-ART tweeter, and a 100W PWM amp for the midwoofer. The front panel includes a power switch and volume control and the rear panel features a gain for the high frequencies (± 4dB) and 2 shelf filters for high and low frequencies. The unit features both balanced (XLR) and unbalanced (RCA) input connectors, allowing it to be used in almost any audio application. The Sub8 compliments the A7X with its compact design and extended low frequency reproduction down to 28Hz. It houses a robust 8.5" woofer with a 1.5" voice coil, and is driven by a 160W ICE Power amp. It includes XLR and RCA inputs/outputs, acoustic fine tuning controls, and a wireless remote for adjusting the volume and crossover frequency.



ITEM	DESCRIPTION	PRICE
A7X7" active 2-way, 50W tweeter, 100W woofer, 42Hz-50kHz (each)	699.00
SUB88" active subwoofer, 160W	750.00



ALESIS M1-ACTIVE USB MONITORS

Studio monitoring systems designed for professional studio use with a 16bit, 44.1/48kHz USB audio interface, no special drivers required. Simply plug in your professional audio products directly – keyboards, mic preamps, guitar effects, DJ mixers, CD and tape players – and record. They have a bass boost and are magnetically shielded for placement near video monitors. The 320 features 1/4" TS, stereo RCA, 1/8" stereo ins; headphone and 1/8" TS output for passive speaker. The 520 is a pair of active, biamped 2-way reference monitors with 2 balanced 1/4" inputs and 1/4" TRS headphone output.



ITEM	DESCRIPTION	PRICE
M1-ACTIVE-320-USB3" USB active speakers, 10W, 80Hz-20kHz (pair)	99.00
M1-ACTIVE-520-USB5" USB active speakers, 25W, 56Hz-20Hz (pair)	199.00

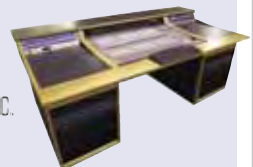
ALESIS M1 ACTIVE MKII BI-AMPLIFIED REFERENCE MONITOR

The M1 Active's woofer and tweeter were specifically designed for the most linear, low distortion response in powered monitoring applications. Its 6.5" woofer cone is polypropylene, and the 1" tweeter dome is made of pure silk, which offers a natural response to prevent ear fatigue during long mix sessions. It also features an internal pole piece mounted phasing plug and is ferro-fluid cooled to maintain the best balance of transient response to power handling. Two audiophile-quality amplifiers (75W LF/25W HF) were developed for the M1 Active, along with 4th order Linkwitz-Riley crossover filters operating at 2500Hz. A special time alignment circuitry for the tweeter avoids the time smear that's typical in less advanced powered speakers. Inputs are XLR 1/4" combo jacks with input level control. Monitors are 8.5"Wx15"Hx9.75"D and weigh 19.5lbs each.



ITEM	DESCRIPTION	PRICE
M1-ACTIVE-MKII Bi-amplified studio monitors (pair)	299.00

LOOKING FOR CUSTOM STUDIO FURNITURE?
SEE PAGE 462



- AUDIO
- COMPUTER AV
- VIDEO
- LIGHTS
- MUSIC
- ACCESSORIES



AUDIX PH3S These high quality, video-shielded self-powered speakers are in a league of their own. With an extremely small footprint, Audix PH3-s are versatile solution for applications requiring high-definition sound in a compact, transportable shielded package. 20W of power per channel (RMS) delivers a clean, surprisingly big sound through a 3-1/2" woofer and a 3/4" tweeter. Sold in pairs with cable and DC power supply. (4.75"W x 7.5"H x 4.75"D, weight- pair 8 lb.) sold in prs.



ITEM	DESCRIPTION	PRICE
PH3S	3 1/2" powered monitors (pair)	229.00
SWB101	Wall mount brackets (pair)	29.95
CASE-PH5	Carrying case	34.95

AUDIX PH5VS The PH5-vs is ideal for a variety of studio and multimedia applications due to clean, precise mid-range design and low distortion. 25W RMS per channel drive a 5 1/4" woofer and 3/4" tweeter in a video-shielded ABS enclosure. Sold in pairs with cable and DC power supply included. (6.3"W x 9.3"H x 6.5"D, weight/pair 11 lb.) sold in pairs.

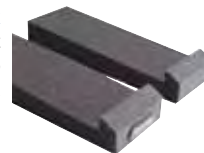


ITEM	DESCRIPTION	PRICE
PH5VS	5 1/4" powered monitors, 25W/channel (pair)	349.00
PH5VS-W	White version of PH5VS	365.00
SWB101	Wall mount brackets (pair)	29.95
SWB101-W	White version of SWB101	29.95
CASE-PH5	Carrying case	34.95



AURALEX MO-PADS MONITOR ISOLATION SYSTEM

The most critical components in your studio rig are your monitors - how you place them is the next. If they rattle on the stand, or create resonance in your furniture, you won't be getting accurate mixes. Simply place your near-field monitors into the Mo-Pad's universal wedge cut, and you've effectively created sonic isolation between your monitors and the rest of your studio.



ITEM	DESCRIPTION	PRICE
MOPAD	Monitor isolation pads	44.99



AVANTONE MIXCUBES SMALL SPEAKER REFERENCE MONITORS

These shielded, full-range monitors are inspired by the legacy of 5C Sound Cubes™ used in virtually all-major studios for the last 25 years to reference small car and TV speakers. Though not intended for main monitor usage, you will find them invaluable to check your mix to see how it will hold up in the real world of small consumer audio devices. They feature 5.25" shielded passive full-range 8-ohm drivers, 6 1/2" cube cabinet with multiple coats of "Retro-Cream" high gloss lacquer finish, nickel plated "high-end" binding posts, and a standard size (5/8"-27 threading) female microphone stand mount built into the cabinet base. Recommended power rating is 50-200W of solid state power or 10-100W of tube power.



ITEM	DESCRIPTION	PRICE
MIXCUBES	5.25" passive, 90Hz-17kHz, 8ohms (pair)	239.00
MIXCUBES-A	Active version of MixCubes, 35W RMS Class A/B, 8ohms (pair)	469.00
MONO-BLOK	Active version of Mixcubes, 35W RMS Class A/B, 8ohms (each)	239.00



BEHRINGER B1030A REFERENCE STUDIO MONITOR

This high-resolution, active 2-way studio monitor is ultra-linear with a true active design and a long-throw 5.25" woofer with a Kevlar cone for ultimate bass response. It features a high resolution, ferrofluid-cooled 1" dome tweeter, a high-precision crossover network with 4th order Linkwitz-Riley filters, and a separately controlled limiter for low and high frequency overload protection. Magnetic shielding allows placement near computer monitors. XLR, 1/4", and unbalanced RCA inputs.



ITEM	DESCRIPTION	PRICE
B1030A-TRUTH	Active 2-way studio monitor, 5.25" Kevlar woofer (pair)	285.99

BEHRINGER B2030-TRUTH MONITORS

A 6.75" 2-way active bi-amplified monitor system with balanced XLR and 1/4 TRS inputs. Features magnetic shielding, separate 75W and 35W amplifiers, active crossover and response from 50Hz-21kHz.



ITEM	DESCRIPTION	PRICE
B2030A-TRUTH	Pair of active monitors	327.99
B2030P-TRUTH	Pair of passive monitors, needs amplifier	217.99

BEHRINGER B2031-TRUTH MONITORS

The TRUTH monitors feature two separate amplifiers providing 150W to an 8.75" woofer and 75W to a ferro-fluid cooled HF driver with a 1" dome tweeter. Other features include magnetic shielding, low-vibration E1 MDF cabinet, 1/4" TRS and XLR connections and a frequency response of 50Hz-21kHz. Sold in pairs.



ITEM	DESCRIPTION	PRICE
B2031A-TRUTH	Pair of active monitors	393.99
B2031P-TRUTH	Passive version, needs amplifier	285.99



BLUE SKY STEREO MONITORING SYSTEM

The EXO2 system is more than external speakers for a computer; it is a complete desktop audio reference monitoring system that provides accurate, full range sound. The system consists of a subwoofer (sealed-box design with 110W, 8" woofer), left and right satellite speakers (binding post inputs), and preamp/remote (3.5mm stereo input, 3.5mm headphone jack, binding post outs, XLR-1/4" combo preamp in, RCA L/R ins) with gain and sub level control knobs. The EXO2 XLR/TRS combo inputs can handle up to +30dBu of signal level at the input. The RCA and 3.5mm inputs are compatible with mixers, CD players, and Hi-Fi pre-amps.



ITEM	DESCRIPTION	PRICE
EXO2	Stereo monitoring system	CALL

BLUE SKY MEDIADESK ENTRY-LEVEL 2.1 MONITORING SYSTEM

MediaDesk offers full-range monitoring and is optimized for computer-driven audio recording and production. Easily expandable to a 5.1 system, this 3 x 60W system includes 2 ultra-compact 2-way satellite speakers, each with high-quality 4" drivers/1" tweeters, along with a dedicated 8" powered subwoofer and Bass Management System.



ITEM	DESCRIPTION	PRICE
MEDIADESK-2.1-SYSTEM	2.1 monitoring system, 3 x 60W	CALL



CAKEWALK MA-15D DIGITAL STEREO MICRO MONITORS

A powerful set of reference speakers for confined spaces. These magnetically shielded monitors feature 24bit/192kHz support, 3 inputs (S/PDIF optical & coaxial, 1/8" line and RCA), 15W/channel, 4" woofer, 2" tweeter and 1/4" headphone port.



ITEM	DESCRIPTION	PRICE
MA15DCW	Desktop monitor-15W/channel, 70Hz-20kHz, dark blue (pair)	CALL
MA15DBKCW	Desktop monitor-15W/channel, 70Hz-20kHz, black (pair)	CALL



- AUDIO
- VIDEO
- COMPUTER AV
- LIGHTS
- MUSIC
- ACCESSORIES

dynaudioacoustics
IF IT'S THERE - YOU'LL KNOW IT



DYNAUDIO ACOUSTICS BM SERIES ACTIVE SPEAKERS

These loudspeakers deliver high resolution, precise tonal accuracy and a natural, lifelike balance. They achieve uncompressed reproduction of the audio signal, even at extremely high sound pressure levels. These active 2-way nearfield monitors feature a 1.1" soft dome tweeter and neodymium driver technology, true clip indicator LED, and XLR input terminals. The BM6A-MKII and BM12A add integrated positioning filters (LF/MF/HF shelving/notch) and a 60/80Hz high-pass filter for subwoofer adaptation. In combination with a Dynaudio professional subwoofer, the BM series is the perfect solution in the studio for the most ambitious multi-channel recordings.

ITEM	DESCRIPTION	PRICE
BM5A-COMPACT	5.7", 2-way active speakers, 50W for HF/LF (pair)	999.00
BM5A-MKII	6.9", 2-way active speakers, 50W for HF/LF (pair)	999.00
BM6A	6.9", 2-way active speakers, 50W for HF, 100W for LF (pair)	1698.00
BM6A-MKII	6.9", 2-way active speakers, 50W for HF, 100W for LF (pair)	1499.00
BM12A	8", 2-way active speakers, 50W for HF, 100W for LF (pair)	1999.00
BM15A	10", 2-way active speakers, 100W HF, 200W for LF (pair)	3145.00
BM9S	10", active 220W sub	999.00
BM14S	12", active 300W sub w/ remote	1799.00

EVENT® EVENT OPAL STUDIO MONITORS

These professional near-field monitors were built from the ground up introducing a new enclosure and custom 2-way driver design. The variable impedance flared ports on the front of the monitors reduce port noise and artifacts typically heard from rear-ported speakers. The molded composite front/sides and aluminum rear panel construction eliminates diffraction effects because of the lack of parallel surfaces. The 8-inch EX8 woofer features X-Coil dual-coil design for better transient response and lowered distortion characteristics, a wide 35Hz-10kHz frequency response, and 1,000W handling. The high-frequency driver features a beryllium dome and aluminum voice coils with a neodymium magnet for low distortion and smooth response. The elliptical wave guide and event logo can be rotated for side mounting. Includes XLR/TRS 1/4" ins, 15-pin D-sub connector for optional AES/EBU digital input module, wall-mounting threaded inserts, plus frequency/level controls located on the front panel.



ITEM	DESCRIPTION	PRICE
OPAL	8" active 2-way, 35Hz-22kHz, 750W (each)	1499.00

Fostex

FOSTEX 6301 SERIES AMPLIFIED MONITORS Coupling a built-in 10W amplifier with a 4" full-range driver in a compact monitor, the 6301 series is the perfect choice for a multitude of settings. The 6301B monitors accept any line-level signal and have an additional XLR input as well as an external headphone jack. The 6301D adds AES/EBU digital inputs. They are shielded for use near video or computer monitors and are constructed of robust die-cast aluminum.



ITEM	DESCRIPTION	PRICE
6301BEAV	Active monitor, 10W (each)	179.00
6301D	Digital active monitor, 10W (each)	229.00
9610	U-bracket (each)	30.00



FOSTEX RM-1 AND RM-2 RACKMOUNT STEREO MONITOR These IRU magnetically shielded stereo speaker monitors are the ideal solution for space-challenged rack room environments. The RM1 is the solution for basic analog input monitoring. It provides XLR/TRS combo-jack inputs with 15W/channel internal amplifiers, 1/4" headphone jack and front panel volume control. The RM-2 adds AES/EBU digital XLR inputs supporting 44.1kHz-96kHz sampling. The sophisticated control panel section includes a 26-dot stereo LED meter, biaxial stereo gain control, phone jack, channel select switch as well as input select switch. It contains a Class "D" power amplifier (10W x 2) for clear sound reproduction and lightweight construction. Multi-voltage power supply.

ITEM	DESCRIPTION	PRICE
RM1	Analog inputs, 15W/channel	399.00
RM2	Analog and digital inputs, 10W/channel, with multi-segment LED metering	499.00

GENELEC®



6010-STEREOPAK

6010-SURROUNDPAK



GENELEC 6010A ACTIVE SPEAKER SYSTEM The 6010A active 2-way speaker system is designed for close-range listening, commonly associated with computer sound systems and portable music players. It is magnetically shielded, allowing close placement to LCD monitors. Works great for those needing to constantly move their workspace to different locations. Features an RCA line level input and variable bass output. Both bass and treble drivers in the 6010A feature 12W amps. The 5040A active subwoofer is extremely compact and designed to complement up to five 6010A with accurate and dynamic bass response reaching down 35Hz. Matched perfectly with the 6010A's, the 5040A subwoofer conveniently features a remote volume control allowing adjustment of the entire sound system as well as versatile acoustic controls for perfect room integration. Available in mystic black, silver or white.

ITEM	DESCRIPTION	PRICE
6010-STEREOPAK	Two 6010As and one 5040A subwoofer	CALL
6010-SURROUNDPAK	Five 6010As and one 5040A subwoofer	CALL

GENELEC 8000 SERIES ACTIVE STUDIO MONITORS

Superb bi-amplified near-field studio monitors with improved resolution and less listening fatigue over the entire audio spectrum. The enclosure is made of die-cast aluminum, offering a sturdy structure and good damping, yet the walls are very thin and allow maximum internal volume. Every Genelec 8000 series monitor comes with an Iso-Pod™ (Isolation Positioner/ Decoupler™) which allows the speaker to be pointed precisely towards the listener for best sound reproduction. The 8020B has a 4" bass driver and a 3/4" dome tweeter, each drive with 20W, while the 8030A uses a 5" bass driver and a 3/4" dome HF tweeter at 40W.



8020-TRIPAK

ITEM	DESCRIPTION	PRICE
8020-TRIPAK	Two 8020Bs and one 7050B subwoofer, black finish	CALL
8020.LSE	Two 8030As and one 7050B subwoofer, black finish	CALL
8020.LSE-5.1	Five 8020Bs and one 7050B subwoofer, black finish	CALL
8030-TRIPLE-PLAY	Two 8030As and one 7050B subwoofer, black finish	CALL

GENELEC ACTIVE SUBWOOFERS The compact Genelec Laminar Spiral Enclosure™ (LSE™) bass reflex cabinet is made of a sheet metal rolled into a spiral shape and clamped between thick MDF side panels & provides excellent laminar flow characteristics with minimal turbulence noise and enables an optimal packing of a very long reflex tube into a small space.



ITEM	DESCRIPTION	PRICE
7050B	Single 8" active subwoofer for use with stereo 8030A or 8130A systems or multi-channel 8020A systems. Features include: 5.1 bass manager with selectable LFE bandwidth, level and phase controls, 70W amplifier. Delivers LF extension to 25Hz	CALL
7060B	Single long-throw 10" active subwoofer designed for use with up to six 8040A or 8030A systems in a multi-channel monitoring environment. Features include: 6.1 bass manager, 120W amplifier. Delivers LF extension to 29Hz	CALL
7070A	Single long-throw 12" active subwoofer designed for use with up to six 8040A or 8050A systems in a multi-channel monitoring environment. Features include: 6.1 bass manager, 250W amplifier. Delivers LF extension to 19Hz	CALL
7071A	Dual long-throw 12" active subwoofer designed for use with up to six 8050A or 1032A systems in a multi-channel monitoring environment. Features include: 6.1 bass manager, 500W amplifier. Delivers LF extension to 19Hz	CALL
7073A	Quad long-throw 12" active subwoofer designed for use with 1037's and large GENELEC monitor systems in a multi-channel monitoring environment. Features include: 6.1 bass manager, 1000W amplifier. Delivers LF extension to 19Hz	CALL



Follow us!

Shop anytime. Buy online. Go to fullcompass.com

GENELEC®

GENELEC 8200/7200 BIAMPLIFIED DSP MONITORING SYSTEMS

These feature magnetic shielding, overload protection circuitry and versatile room response controls.

The 8250A/8240A monitors have reflex ports for clear and articulate low frequencies, Directivity Control Waveguide, rounded edges, curved front and sides to give the Minimum Diffraction Enclosure flat frequency response both on and off axis. The 8250A/8240A have both analog and AES digital inputs in combination with a digital thru connection. They come with Iso-Pod™ (Isolation Positioner/Decoupler™) which eliminates coloration of the sound by decoupling the monitor from its mounting surface, and rear support points for floor and wall stands. The 7200 series subwoofers built-in bass management system supports 8 input and output channels (4 XLR connectors) for AES/EBU formatted digital audio. The main channel's crossover frequency can be adjusted between 50Hz-100Hz. The LFE channel input (input 4) features an adjustable 50Hz-120Hz low-pass filter and a 0/+10dB sensitivity switch. The Genelec Loudspeaker Manager (GLM™) control network and software features level adjustment, distance delays, phase and flexible room response improvement equalization with the reliable and robust AutoCal™ automated calibration system via the GLM™ control network.

ITEM	DESCRIPTION	PRICE
8250APM.....	Biamped 150W 8" woofer, 120W 1" tweeter, 30Hz-20kHz (each).....	CALL
8240APM.....	Biamped 90W 6.5" woofer, 90W 3/4" tweeter, 48Hz-20kHz (each).....	CALL
7271APM.....	2x12" drivers, 500W, 19Hz-100Hz (each).....	CALL
7270APM.....	12" driver, 250W, 19Hz-100Hz (each).....	CALL
7260APM.....	10" driver, 120W, 19Hz-100Hz (each).....	CALL
GLM.....	GLM Control Network hardware and software package.....	CALL
GLM-SE.....	GLM.SE Control Network hardware and software package for small environments.....	CALL
GLM-SE-EXP.....	License & hardware to allow multi-room install of GLM.SE package.....	CALL
AD9200A.....	8-channel 24bit/96kHz A/D converter.....	CALL



GENELEC 8030.LSE SURROUND SOUND MONITOR POWER PAK 5.1 multi-channel monitoring system consisting of 5 8030A active bi-amp monitors and 1 7060A active subwoofer with built-in bass manager. Suitable for production and playback environments up to approx. 3000cu.ft. and listening distances to approximately 8ft.

ITEM	DESCRIPTION	PRICE
8030.LSE.....	5.1 surround package.....	CALL

iKEY-AUDIO



iKEY AUDIO MV2 SERIES MONITORS These active studio monitors feature a front-firing bass port, soft-domed tweeter, and a red woven glass aramid composite woofer. The monitors also include refined voicing, a sleek look for better monitor accuracy and produce a crisp and extensive range of frequencies. These versatile monitors are perfect for small mixing situations or multi-channel surround sound setups. All models have Kevlar low frequency drivers, 10k ohm balanced 1/4" TRS and XLR inputs and unbalanced RCA input. Studio monitors also have 1" soft dome, 25W, high frequency drivers.

ITEM	DESCRIPTION	PRICE
M505V2.....	5" studio monitor, 2-way, biamped, 50W LF + 25W HF (each).....	129.95
M606V2.....	6" studio monitor, 2-way, biamped, 65W LF + 25W HF (each).....	179.95
M808V2.....	8" studio monitor, 2-way, biamped, 100W LF + 25W HF (each).....	229.95
M10S2.....	10" powered subwoofer, 175W LF.....	299.95

Quick Purchase: 800-476-9886

M-F: 8:30-5:30 CST



FULLCOMPASS.COM

Full Service: 800-356-5844

M-F: 9:00-5:30 CST



JBL LSR2300 SERIES ACTIVE NEAR FIELD MONITORS

An affordable speaker system that sounds accurate in any room with a custom waveguide for superior imaging and smoother frequency response to the listening position. Each model produces exceptional SPL through JBL-engineered high-sensitivity transducers, high-output amplifiers and careful attention paid to the thermal properties of the system. Add the MSC1 controller for room correction. Comes with master volume control, sub out, adjustable low frequency, high frequency speaker EQ, headphone out, mute control, calibration mic and control center software.



ITEM	DESCRIPTION	PRICE
LSR2325P.....	5" 2-way, 52Hz-19kHz, 50W/35W (each).....	199.00
LSR2328P.....	8" 2-way, 44Hz-18kHz, 95W/70W (each).....	349.00
LSR2310SP.....	10" powered sub, 31Hz-150Hz, 180W.....	399.00
RMC-KIT.....	Room Mode Correction software.....	129.00
MSC1.....	Monitor system controller with Room Mode Correction.....	299.00

JBL CONTROL 2P ACTIVE MONITORS

The compact design, rugged enclosure, and professional features-set make the Control 2P ideal for desktop recording and video production, A-V presentations, professional broadcast applications, and monitoring of electronic musical instruments. The 5.25" woofers and .75" dome tweeters are paired with a 35W per channel amplifier. XLR and RCA inputs.



ITEM	DESCRIPTION	PRICE
C2PM.....	1 powered master speaker, power supply, 1 snap-on pedestal.....	159.00
C2PS.....	1 powered master speaker, 1 extension speaker, extension speaker cable w/ right-angle 1/4" plug, power supply, 2 snap-on pedestals.....	209.00
MTC-2P.....	Wallmounting kit.....	21.00

JBL LSR4300 SERIES ACTIVE STUDIO MONITORS WITH ROOM MODE CORRECTION

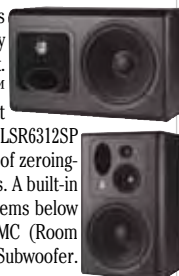
A professional active studio monitor system with centralized system control, and automatic room compensation, that automatically analyzes and compensates for low frequency standing waves and proximity to boundaries. Just plug the calibration microphone into the reference input and press a button to optimize frequency response at the mix position automatically. The result is a stunningly clear and articulate sound stage enabling reliable mixes that translate faithfully to the outside world. Control of system level, individual speaker SOLO, input source selection, high and low frequency EQ settings, and adjustment of all parameters can be made from each speaker's front panel, with the system's infrared remote control, or over a network with LSR4300 Control Center Software. Ideal for digital surround monitoring applications.



ITEM	DESCRIPTION	PRICE
LSR4326P.....	Bi-amped 150W 6" woofer / 75W 1" tweeter (each).....	549.00
LSR4328P.....	Bi-amped 150W 8" woofer / 75W 1" tweeter (each).....	779.00
LSR4326P-PACK.....	Package, 2 speakers & accessory kit.....	1099.00
LSR4328P-PACK.....	Package, 2 speakers & accessory kit.....	1559.00
LSR4300-ACCESSORYKIT.....	Accessory kit.....	225.00
LSR4312SP.....	Powered subwoofer.....	999.00

JBL LSR6300 STUDIO MONITORS

Each model provides ultra-flat response, extraordinary SPL capability, and technology to optimize performance in any size production environment. All models are shielded, ready for mounting and THX® pm3™ approved. Linear Spatial Reference Technology ensures that the speakers sound flat at the mix position. The LSR6328P and LSR6312SP Subwoofer are equipped with RMC - JBL's ingenious method of zeroing-out bass problems at the mix position caused by room modes. A built-in 1/10th octave parametric equalizer allows you to correct problems below 100Hz. The LSR6325P and LSR6332 enjoy the benefits of RMC (Room Mode Correction) when used in a system with the LSR6312SP Subwoofer. Enclosures are reinforced and mounting points are provided.



ITEM	DESCRIPTION	PRICE
LSR6325P-1.....	5.25" 2-way, 70Hz-20kHz 50/100W amplifier (each).....	459.00
LSR6328P.....	8" 2-way, 50Hz-20kHz 120/250W amplifiers (each).....	1509.00
LSR6332.....	12" 3-way, 60Hz-22kHz 200/800W passive (left or right), (each).....	1559.00
LSR6312SP.....	12" subwoofer, 28Hz-80Hz 260W amplifier (each).....	1679.00

AUDIO



COMPUTER AV



VIDEO



MUSIC



ACCESSORIES



- AUDIO
- VIDEO
- LIGHTS
- MUSIC
- ACCESSORIES



KRK ROKIT POWERED STUDIO MONITORS This 2nd generation of accurate studio monitors features improved speaker voicing, a recessed high-frequency waveguide, and new 1" neodymium "Soft Dome" tweeters. Other features include radiused corners and an active crossover to reduce edge diffraction, high frequency output level adjustment, front-firing ports, and input volume control. Features KRK's signature woven-glass yellow woofers with a tight, clear low-end response.



ITEM	DESCRIPTION	PRICE
RP5G2.....	5" 2-way active monitor, 75W (each)	149.50
RP6G2.....	6" 2-way active monitor, 100W (each)	199.50
RP8G2.....	8" 2-way active monitor, 140W (each)	249.50

KRK VXT SERIES 2 The VXT Series 2 has a visually striking enclosure design that is also functional, providing low resonance, improved structural integrity and extended low-end, slotted ports for reduced port turbulence, plus a sleek curvature that provides excellent imaging characteristics and a wider sweet spot. The domed tweeter (true silk for fast transient response) and the new woofer design (Woven Kevlar with a stiffer, lighter cone that provides low distortion and extended low-end) are both vented to remove heat and reduce the effects of power compression, enabling these monitors to maintain their sonic signature. Monitor models have XLR and 1/4" TRS combo inputs, tamper resistant switch covers, integrated Omnimount support, and are all video shielded. The KRK10S has a frequency response of 36Hz-130Hz and has an active limiter.



ITEM	DESCRIPTION	PRICE
VXT4.....	4" 2-way bi-amped active monitor (each), 45W	299.00
VXT6.....	6" 2-way bi-amped active monitor (each), 90W	449.00
VXT8.....	8" 2-way bi-amped active monitor (each), 180W	599.00
KRK10S.....	10" active subwoofer, 225W	399.00

MACKIE®

MACKIE MR-MK2 SERIES REFERENCE MONITORS Suited for a variety of environments, these monitors offer a very flat sound and can handle high volumes. Features include Class "A"/"B" amplification, a custom waveguide, a minimum-diffraction molded baffle, adjustable HF & LF acoustic controls, magnetic shielding, and XLR, TRS & RCA inputs.



ITEM	DESCRIPTION	PRICE
MR5-MKII.....	5.25", 55W LF driver, 30W HF 1" tweeter (each)	149.99
MR8-MKII.....	8" 100W LF driver, 50W HF 1" tweeter (each)	249.99

MACKIE HR MK2 SERIES ACTIVE REFERENCE MONITORING SYSTEM

Internally bi-amplified control monitors with completely ruler-flat neutral response for clean & articulated mix monitoring. The new cast aluminum Zero Edge Baffle™ minimizes diffraction for a crystal clear image of your mix, and controls sound waves for wide, even dispersion. All speakers are matched, have balanced XLR, TRS & unbalanced RCA inputs, twin FR series amplifiers, optimized wave guide for wide, even sweet zone, Acoustic Space, LF roll-off & HF controls.



ITEM	DESCRIPTION	PRICE
HR624-MKII.....	6.7" 2-way bi-amped monitor, 40/100W amps, THX pm3™ certified (each)	499.99
HR824-MKII.....	8.75" 2-way bi-amped monitor, 100/150W amps, THX pm3™ certified (each)	679.99

LOOKING FOR SPEAKER/MONITOR STANDS?
SEE PAGE 449



M-AUDIO®
Where do you want to take your music?

M-AUDIO STUDIOPHILE BX5-D2/8-D2 DELUXE MONITORS & SBX10 SUB

Biamped nearfield studio reference monitors with 5" or 8" curved Kevlar low-frequency drivers and 1" natural silk waveguide-loaded high-frequency drivers. Synergistic integration of all components yields superior frequency response and power handling. Custom-tuned crossovers distribute 70W (BX5-D2) or 130W (BX8-D2) of bi-amplified power for optimal frequency handling by each driver. Full magnetic shielding allows desktop use next to video or computer displays and it has high-temperature voice coils and damped rubber surrounds for durability and fidelity. Monitors have XLR balanced and 1/4" balanced/unbalanced inputs. Add the optional SBX10 active subwoofer for even more bass. Offers 240W into a 10" subwoofer with a stereo bass management system that splits the signal at the variable crossover point (50Hz-200Hz), routing everything below to the sub, and everything above to the satellites. It also features a subwoofer defeat function with 1/4" footswitch input.



ITEM	DESCRIPTION	PRICE
BX5-D2.....	5" driver with 70W biamped power (pair)	COMING SOON!
BX8-D2.....	8" driver with 130W biamped power (pair)	COMING SOON!
SBX10.....	10" driver, 240W sub with stereo bass management	449.99

M-AUDIO AV SERIES POWERED SPEAKERS

The AV30 and AV40 powered speakers use proven M-Audio technology in compact systems that are perfect for small spaces or traveling musicians. The AV40 speakers feature 4" polypropylene-coated woofers, 3/4" ferrofluid-cooled silk cone tweeters, 20W per channel internal amplifier and OptImage III wave guides for punchy lows, crisp highs and an even response. For more mobility, the AV30 speakers include 3" polypropylene-coated drivers, 1" ferrofluid-cooled silk cone tweeters, internal amplification and the same OptImage III technology as the AV40s.



ITEM	DESCRIPTION	PRICE
AV30.....	3" active, 10W per channel (pair)	94.49
AV40.....	4" active, 20W per channel (pair)	149.99



NEUMANN KH120 NEAR FIELD MONITOR

Great for mixing, tracking, & mastering in a variety of studios and also recommended for use as a rear loudspeaker in larger multi-channel systems. Features include a long-throw bass driver, composite sandwich cone, titanium fabric dome, and Neumann's Elliptical Mathematically Modelled Dispersion™ waveguide for superior sound in a variety of acoustical environments.



ITEM	DESCRIPTION	PRICE
KH120.....	5.25 active, 50W LF/50W HF, 52Hz-21kHz, 111.1dB SPL (each)	749.95

Pioneer

PIONEER S-DJ SERIES ACTIVE REFERENCE SPEAKERS

Designed for DJ and production applications, these speakers feature a curved waveguide enclosure for better imaging & staging, a Bass Reflex enclosure for stronger bass & mid-bass output, built-in linear EQ, and 4 switchable inputs. Power, volume, equalization, muting and inputs are controllable via the included control knob. Also features high-force magnets for better subwoofer control, a bi-amp circuit, auto-standby, and a low-resonance chimney-style heat sink. The speakers offer four types of inputs – XLR, 1/4" TRS phone, and two sets of RCA inputs, so you can connect a variety of devices without needing to change cable connections. Can be stand-mounted. Also comes with a link cable, 2 power cables, and 8 rubber feet.



ITEM	DESCRIPTION	PRICE
S-DJ05.....	5" active, 50Hz-25kHz, w/volume control accessory, (pair)	699.00
S-DJ08.....	8" active, 42Hz-26kHz, w/volume control accessory, (pair)	999.00



Follow us!

PRICES SUBJECT TO CHANGE WITHOUT NOTICE. Call today or visit us online!



» *Trusted in the audio industry for over 80 years...*

Neumann now introduces the first product in a line of studio monitors, the KH 120. A representation of the latest in acoustic and electronic simulation and measurement technologies, the KH 120 ensures the most accurate sound reproduction possible. It has a Mathematically Modeled Dispersion waveguide (MMD™), flexible acoustical controls, analog class-AB amplifiers, a large headroom analog input and an extensive mounting hardware range. All of this provides the user with the maximum versatility over a wide variety of acoustic conditions, source equipment, and physical locations.



800-356-5844
FULLCOMPASS.COM

PRO AUDIO | VIDEO | AV | LIGHTING
MUSICAL INSTRUMENTS



YAMAHA HS SERIES POWERED MONITORS These nearfield studio reference monitors are the active descendants of the NS10M's that so many people use for referencing their mixes. These are available in two sizes: the HS50M is a 70 W. bi-amped monitor with 5" woofer and 3/4" dome tweeter. The HS80M has a 120W bi-amp feeding an 8" woofer and 1" dome tweeter. Both models feature white cone woofers, XLR and 1/4" input connections, room control, and frequency control switches. There is also a companion 120W subwoofer model HS10W, with long-stroke 8" woofer. Connections include dual XLR and 1/4" inputs, and three balanced XLR outputs (mix, L&R). Controls include master level, phase and low/high cutoff frequency.

ITEM	DESCRIPTION	PRICE
HS50M.....	5" 70W monitor, (each).....	CALL
HS80M-SINGLE.....	8" 120W monitor, (each).....	CALL
HS10W.....	8" 120W active companion subwoofer to HS80M.....	CALL



YAMAHA MS101-III POWERED MONITOR SPEAKER Especially designed for home recording use and semi-professional applications. Multiple input configuration and comprehensive low, high EQ and volume controls. Priced each.

ITEM	DESCRIPTION	PRICE
MS101-III.....	10W 4" active monitor.....	CALL



YAMAHA MSP3 POWERED MONITOR 2-way powered monitor speakers designed for use in personal music production systems. Each features a built-in 20W amplifier that drives both the 10cm (4") cone and 2.2cm (7/8") tweeter and is equipped with a balanced XLR input and a balanced phone jack input and an unbalanced RCA jack input. Also features separate volume controls for the LINE 1 (RCA jack) input and LINE 2 (XLR/phone) input plus HIGH and LOW tone controls for sound tailoring. The monitors are magnetically shielded.

ITEM	DESCRIPTION	PRICE
MSP3.....	Monitor speaker (each).....	CALL
BMS10A.....	Mic stand mount adapter (each).....	CALL



YAMAHA MSP5 & MSP7 ACTIVE STUDIO MONITORS

Both monitors feature cone woofers, titanium-dome tweeters, and control switches for bass, treble, and low cut. The MSP5 has a 5" woofer driven by a 40W amplifier and a 1" tweeter driven by a 27W amplifier, both featuring magnetic structures that achieve exceptionally low distortion. The tweeter works with a unique wave-guide horn that achieves broad, uniform high frequency dispersion over 120° for optimum balance regardless of listening position. The MSP5 also boasts an advanced driver and enclosure design (including a low-diffraction rounded baffle) for smooth, uniform dispersion, flat frequency response out to 40kHz, and XLR and 1/4" balanced inputs. The MSP7 is a bi-amped monitor with a 6.5" cone woofer driven by an 80W amplifier and a 1" tweeter driven by a 50W amplifier. The MSP7 has an XLR input.



ITEM	DESCRIPTION	PRICE
MSP5-STUDIO.....	5" active studio monitor (each).....	CALL
MSP7-STUDIO.....	6.5" active studio monitor (each).....	CALL
SW10-STUDIO.....	10" active subwoofer, 120W, 3 XLR outputs (mix, L/R).....	CALL



PRIMAACOUSTIC

PRIMAACOUSTIC RECOIL STABILIZER™ SPEAKER MOUNTING DEVICE

A platform for loudspeakers featuring a high-density urethane base that isolates the speaker from the shelf, monitor-bridge or stand, eliminating vibration-borne resonance to the sub-structure. A heavy laser-cut steel plate is added and sandwiched between the isolation layer and a no-slip neoprene top stabilizes the speaker. Reducing the backward 'recoil' energy results in significantly greater detail at all frequencies, with tighter bottom end & improved depth of field. Available in various sizes and weights for different speaker designs. Available in standard or custom angles to aim the speakers for critical listening. Please call for assistance choosing the right model for your monitors.



ITEM	DESCRIPTION	PRICE
RX5-HF.....	7.5"W x 9.5"D x 1.9"H, 32lb load limit.....	89.99
RX5-DF.....	Same as RX5-HF but with 5° "downfire" angle.....	89.99
RX5-UF.....	Same as RX5-HF but with 10° "upfire" angle.....	89.99
RX7-HF.....	10.3"W x 13"D x 2.6"H, 44lb load limit.....	99.99
RX7-DF.....	Same as RX7-HF but with 5° "downfire" angle.....	99.99
RX7-UF.....	Same as RX7-HF but with 10° "upfire" angle.....	99.99
RX9-HF.....	15" W x 11" D x 2.6" H, 50lb load limit.....	124.99
RX9-DF.....	Same as RX9-HF but with 5° "downfire" angle.....	124.99
RX12-HF.....	20"W x 13"D x 2.6"H, 65lb load limit.....	199.99
RX12-DF.....	Same as RX12-HF but with 5° "downfire" angle.....	199.99
RX17-HF.....	17"W x 17"D x 2.6"H, 65lb load limit.....	229.99
RX20-HF.....	20"W x 22"D x 2.6"H, 75lb load limit.....	269.99



ROLLS HR155 MONITOR SPEAKER This rackmountable 5W monitor speaker features an all-metal chassis, an internal amp designed to dissipate heat internally without aid of outside cooling, and comes with a universal power supply. Includes stereo balanced RCA line level ins and outs, as well as an XLR line level input on the back. 1/8" stereo line level in is found on front panel. Rack ears sold separately.

ITEM	DESCRIPTION	PRICE
HR155.....	5W monitor speaker.....	100.80
HR31.....	Optional rack ears kit for HR155.....	31.05
RMS270.....	Optional rack tray for HR155.....	47.25

SAMSON

SAMSON MEDIAONE ACTIVE MONITORS

Perfect for music, video, and gaming applications. Each monitor has a 25mm high frequency tweeter and passive crossovers utilizing a multiple pole design for a linear response. Models offer a convenient front panel 3.5mm stereo input, volume control, headphone output, with an auxiliary RCA input on rear for connecting a second source like an MP3 player.



ITEM	DESCRIPTION	PRICE
MEDIAONE-3A.....	3" woofer, 15W (pair).....	99.00
MEDIAONE-4A.....	4" woofer, 20W (pair).....	149.00
MEDIAONE-5A.....	5" woofer, 20W (pair).....	199.00



REVEAL-501A



TANNOY REVEAL SERIES MONITORS

An elliptical tweeter extends the response to 30kHz, keeping the audible range below 20kHz free of phase distortions for faithful reproduction of harmonics and a stable stereo image. The MDF cabinet minimizes diffractions with its sculpted baffle and flush fitting drivers. Monitors feature independent gain control on the rear panel (active models only), along with HF trim control for fine-tuning. Balanced XLR and unbalanced TRS jack inputs. Available in passive and active models. The TS Series active subwoofers use long-throw transducers, designed to maximize low frequency extension while delivering high sound pressure levels. Integrate well into a 2ch or 5.1 system. Both RCA and XLR line level inputs are provided.

ITEM	DESCRIPTION	PRICE
REVEAL-501A.....	5" 2-way active, 64Hz-30kHz, 60W total power (each).....	CALL
REVEAL-601A.....	6.5" 2-way active, 63Hz-30kHz, 90W total power (each).....	CALL
REVEAL-601P.....	6.5" 2-way passive, 63Hz-30kHz, 50-100W RMS (each).....	CALL
TS1001.....	10" 300W active subwoofer, 29Hz.....	CALL
TS1201.....	12" 500W subwoofer, 15Hz.....	CALL



Follow us!

Tenemos ventas y servicio en Español. Expertos que hablan Español disponibles en x1178 y x1164.