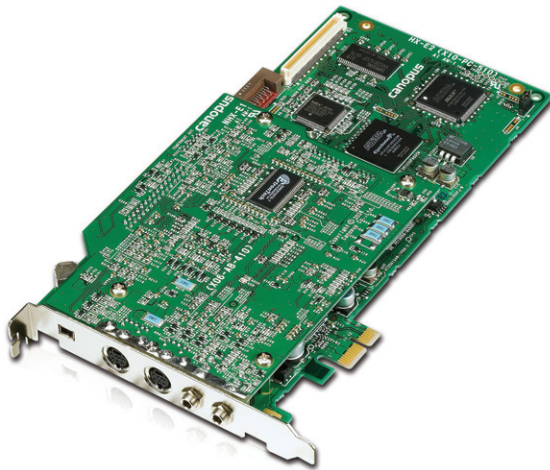




# EDIUS NX Express



## Seamless Real-Time Workflow Handles Any Mix of HD/SD



The Thomson Grass Valley™ EDIUS® NX system supports the real-time editing of all popular standard-definition (SD) and high-definition (HD) formats, including Canopus® HQ, Canopus Lossless, DV, DVCAM, HDV, MPEG-2, and uncompressed video.

### EDIUS NX Express – Handle Any SD/HD Mix

Designed for multi-core CPUs and motherboards with PCI Express slots, our ground-breaking EDIUS NX Express turns your desktop PC into a real-time, multi-format nonlinear editing system.

The EDIUS NX Express system can handle any mix of HD and SD video content; unlimited video, audio, title, and graphics layers; and any combination of real-time effects. It offers real-time, full-resolution, full-quality component HD and SD video output; bi-directional analog/DV conversion using our ADVC® technology from within any Windows-based nonlinear editing software, and lets you edit HD video output from a timeline.

Most importantly, the EDIUS NX Express system can preview your work in progress in high quality and full resolution—in real time—on the type of video monitor on which it is intended to be displayed, including HD.

### Real-Time Display Streamlines Workflows

Unlike systems that compromise video quality to provide real-time editing, the EDIUS NX Express system delivers genuine real-time, HD-resolution editing—including full-quality, full-frame-rate HD output to an HD video monitor from the timeline. No rendering is required to preview edited sequences; the system displays them instantly on HD video monitors.

### Exact Video/Audio Format Preservation

The EDIUS NX Express system preserves your original video and audio data at every step of the editing process. The format you start with is exactly what the system delivers. This capability eliminates any guesswork when it comes to applying the system's many real-time effects.

## KEY FEATURES

- Real-time, mixed-format editing of HD, HDV, DV, MPEG-2, uncompressed, and lossless video using EDIUS editing software included
- Real-time SD/HD resolution, aspect ratio, and frame-rate conversion and output, including 16:9 to 4:3 and NTSC to PAL
- Real-time SD/HD effects, keyers, transitions, and titles
- High-quality proprietary software codecs, including the award-winning Canopus HQ software codec
- High-speed, hardware-based SD MPEG-2 and MPEG-4 timeline export
- High-quality analog and digital inputs/outputs for DV, S-Video, composite video, and unbalanced audio
- Hardware-based line scaling for pristine HD video output
- Supports newer file-based formats, including Infinity™ JPEG 2000, XDCAM and XDCAM EX, P2 (DVCPRO and AVC-Intra), and GFCAM
- Compatible with Windows XP and Windows Vista operating systems

### Player/Recorder Monitor View

Player side controls capture and source trimming. Recorder side controls timeline operation and trimming.



### Jog/Shuttle Control

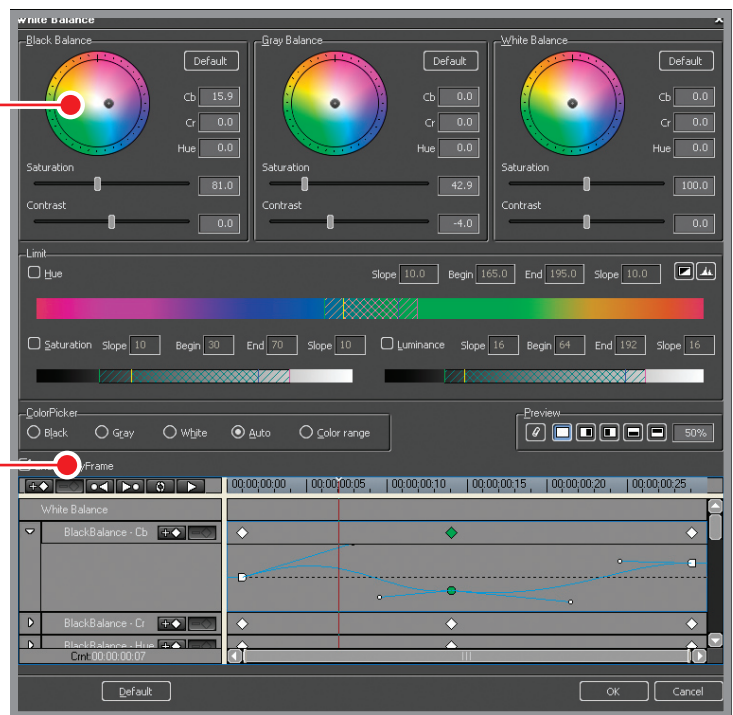
Jog/shuttle control via slider, mouse scroll-wheel, or mouse motion.

### Unlimited Video, Audio, and Title Tracks

Edit with unlimited video, audio, and title tracks.

### Real-Time Color Correction

Use real-time color correction with an interactive split-screen display and secondary controls. Stack multiple filters for even greater control.



### Keyframeable Color Correction

Color correction filters are keyframeable for precise, subtle changes over time.

### Unsurpassed Image Quality and Performance

EDIUS software features the revolutionary Canopus HQ codec. Designed with scalable technology, this innovative codec offers the highest image quality and performance available in any HD editing platform. The Canopus HQ codec not only provides superior luma and chroma sampling of HD video, but features an adjustable bit rate for increased video quality when capturing and encoding on high-performance systems.



**Flexible Bin Structure**

Organize, search, and manage assets with folders and dynamic search results.

**Real-Time Audio Mixer and Waveform/Vectorscope**

Use the real-time audio mixer for audio adjustments and the real-time waveform/vectorscope to ensure legal output.



**GPU-Accelerated 3D Transitions**

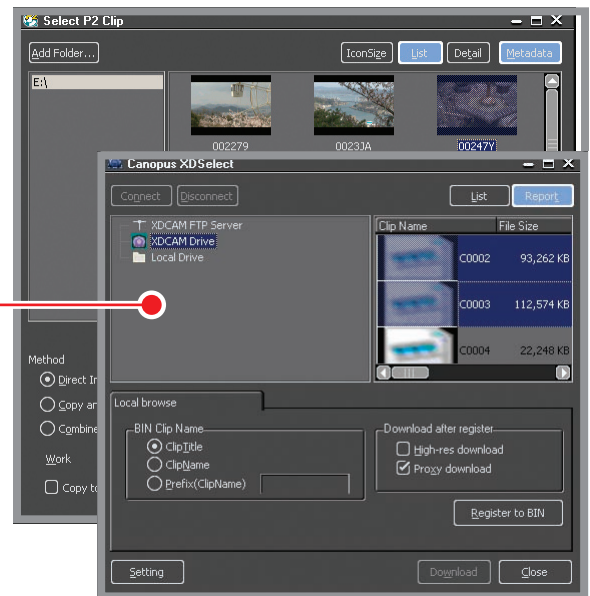
Harness the power of your graphics card to create real-time, stunning quality transition effects in SD and HD, featuring uniquely native YUV 4:2:2 processing for improved image quality and performance. Using the GPU as an additional, parallel source of computation means that the CPU does not become a bottleneck.

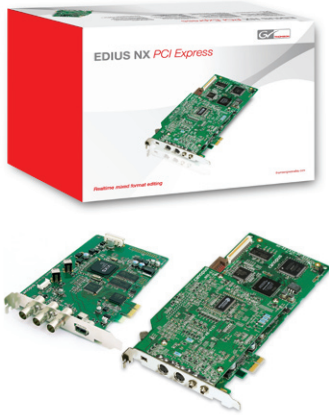
**Tapeless Workflow Support**

Support for tapeless workflows with metadata preservation for modern file-based production.

**Superior Integration for Tapeless Workflows**

EDIUS software provides excellent support for today's tapeless digital workflows including those that use Thomson Grass Valley K2 media server/media client systems, as well as Panasonic P2 and VariCam, Sony XDCAM, Ikegami GigaFlash, and popular direct-to-edit (DTE) devices. It doesn't matter whether assets come from tape, disk, network, or a mixture of them all, with EDIUS software, you spend less time worrying—and less time editing, too.





## Package Contents

- EDIUS NX Express (NHX-E2) PCI Express x1 bus card
- SD/HD component output and SD MPEG-2/MPEG-4 encoder PCI Express x1 bus card
- 1 x FireWire (IEEE 1394) cable (4-pin to 4-pin)
- 1 x board connection cable
- EDIUS software installation DVD-ROM
- TitleMotion Pro installation CD-ROM
- USB security dongle
- EDIUS QuickStart guide
- EDIUS hardware setting guide

## SPECIFICATIONS

### Video Capture Formats

- Canopus DV: 720x480@59.94i (NTSC), 720x576@50i (PAL)
- YUY2 (uncompressed): 720x486@59.94i (NTSC), 720x576@50i (PAL)
- Canopus Lossless: 720x486@59.94i (NTSC), 720x576@50i (PAL)
- HDV/Canopus HQ: 1080@59.94i, 1080@50i, 1080@30p, 1080@25p, 1080@24p, 720@60p, 720@50p, 720@30p, 720@25p, 720@24p, 720x480@60p, 720x576@25p, 720x576@50p

### Video Output Formats

- DV/DVCAM: 720x480@59.94i (NTSC), 720x576@50i (PAL)
- HDV: 1080@59.94i, 1080@50i, 1080@30p, 1080@25p, 1080@24p, 720@60p, 720@50p, 720@30p, 720@25p, 720@24p, 720x480@60p, 720x576@25p, 720x576@50p
- S-Video, composite: 720x480@59.94i (NTSC), 720x576@50i (PAL)
- BNC component: 1080@59.94i (NTSC), 1080@50i (PAL), 720x480@59.94i (NTSC), 720x576@50i (PAL)

### Digital Video Input/Output

- 1 x 4-pin FireWire (IEEE 1394)
- 1 x 6-pin FireWire (IEEE 1394)

### Analog Video Input/Output

- 1 x S-Video and composite combined (7-pin miniDIN) input
- 1 x S-Video and composite combined (7-pin miniDIN) output
- 1 x component (BNC Y, Pb, Pr) output

### Analog Audio Input/Output

- 1 x stereo (3.5 mm, unbalanced) input
- 1 x stereo (3.5 mm, unbalanced) output
- 1 x stereo (RCA, unbalanced) output

### MPEG-2/MPEG-4 Export Video Resolutions

- MPEG-2: 720x480, 720x576, 704x480, 640x480, 480x480, 352x480, 352x576, 352x240, 352x288, 320x480, 320x240, 176x120
- MPEG-4: 720x480, 720x576, 704x480, 640x480, 480x480, 352x480, 352x576, 352x240, 320x240, 176x120

### MPEG-2/MPEG-4 Export Video Frame Rate

- MPEG-2: 29.97 fps, 25 fps
- MPEG-4: 15 fps, 30 fps, 25 fps

### MPEG-2/MPEG-4 Export Video Compression

- MPEG-2: (ISO/IEC 13818-2) Main Profile @ Main Level (I, B, P frames) I-frame support only
- MPEG-4: (ISO/IEC 14496-14)

### MPEG-2/MPEG-4 Export Video Bit Rate

- MPEG-2: 128 kb/s – 15 Mb/s
- MPEG-4: 32 kb/s – 8 Mb/s
- Variable (one-pass) and constant bit-rate support

### MPEG-2/MPEG-4 Export Audio Sampling Rates

- MPEG-2: 32-, 44.1-, 48 kHz
- MPEG-4: 24-, 48 kHz

### MPEG-2/MPEG-4 Export Audio Compression

- MPEG-2: MPEG-1 Layer 2
- MPEG-4: AAC

### MPEG-2/MPEG-4 Export Audio Bitrates

- MPEG-2: 96 to 384 kb/s
- MPEG-4: 32-, 48-, 64-, 96-, 128-, 144-, 182- 224-, 256-, 288 kb/s

### Minimum System Requirements

The EDIUS NX Express is capable of editing both SD and HD content in real time; however the system requirements for real-time HD editing are significantly higher than those for SD editing. The requirements shown here are for real-time HD editing and will provide a very pleasant real-time editing experience in SD as well.

- Intel Pentium D 3.0 GHz or higher (multi-processor and hyper-threading technology supported)
- 1 GB RAM
- Two free PCI Express x1 slots
- 800 MB free disk space
- DVD-ROM drive for software installation
- ATA100/7200 rpm or faster hard disk, capable of sustaining at least 20 MB/s data-transfer speeds. A RAID stripe set of two or more hard disk drives is required for multiple HD stream output
- Graphics card with at least 128 MB of video RAM and hardware-based DirectDraw overlay and 32-bit color display at a 1024x768 resolution
- Windows XP Home or Windows XP Professional (Service Pack 2 or later)
- DirectX 9.0 or later
- Sound card

### Service and Support

- Software: 90-day limited warranty
- Hardware: 1-year limited warranty

## HEADQUARTERS

Thomson Worldwide Headquarters  
46 Quai A. Le Gallo  
92648 Boulogne Cedex  
FRANCE

## DEALERS/RESELLERS

To find your local reseller or dealer for Thomson Grass Valley professional audio video products, please visit [professional.grassvalley.com/sales/](http://professional.grassvalley.com/sales/).

## SERVICE & SUPPORT

Twelve-month limited warranty with service provided through local resellers. Additional support available on a contractual basis.