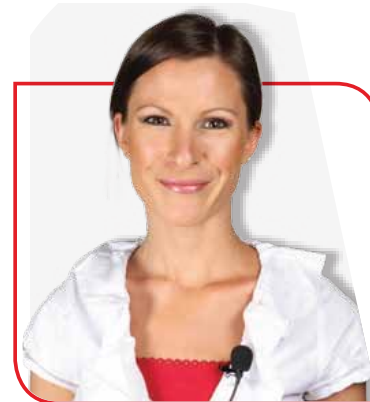
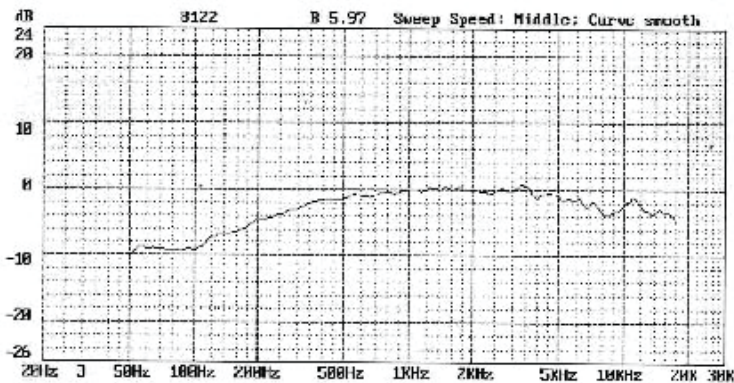


Lapel Microphone LM-835

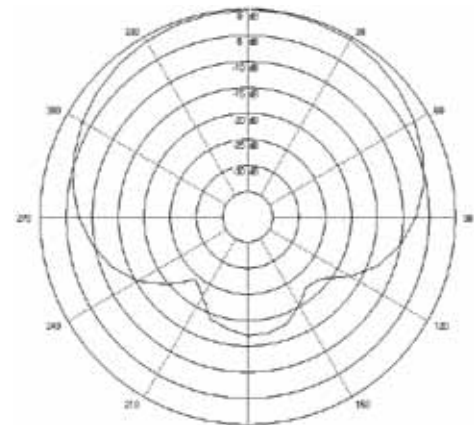


Lapel Microphone with 3.5mm connector

Frequency Response Curve



Polar Pattern



Specifications

Element	Back Electret-Condenser
Polar Pattern	Cardioid
Directional Characteristics	Uni-directional
Frequency Response	50 Hz ~ 18,000 Hz
Impedance	1400 30% (at 1000 Hz)
Sensitivity	-64 dB / microbar
Maximum SPL	115dB (1KHz at Max SPL)
Dynamic Range	82 dB (1KHz at 1% T.H.D.)
S/N Ratio	61dB (1 KHz at Pa)
Operating Voltage	DC 1.5V – 10V (RL: 600Ω)
Connector	3.5mm Phone, right-angle

Features

- Least Obtrusive
- Quality Voice Reproduction