

ALLEN & HEATH

Parts identification sheet

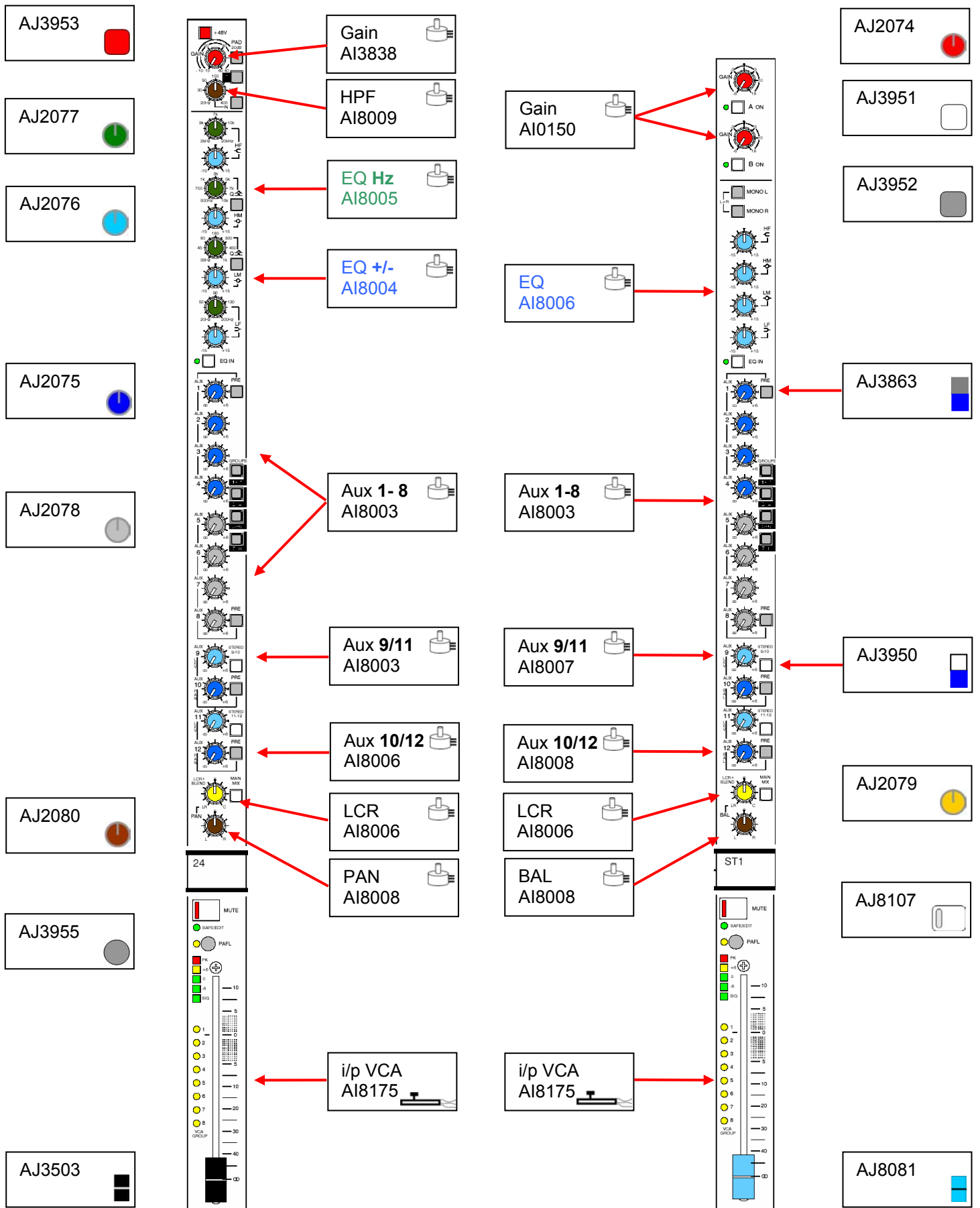
ML4000

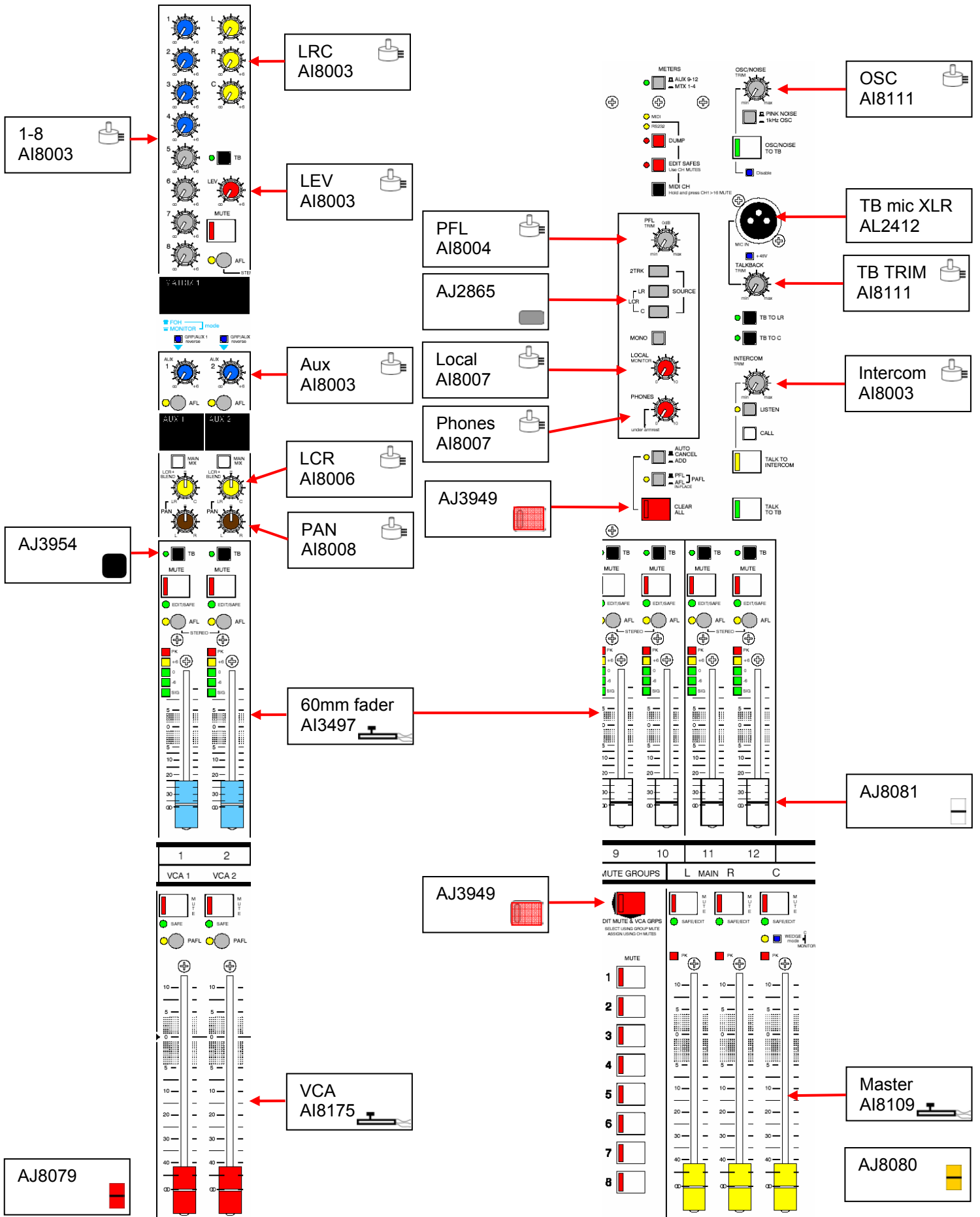
How to order parts

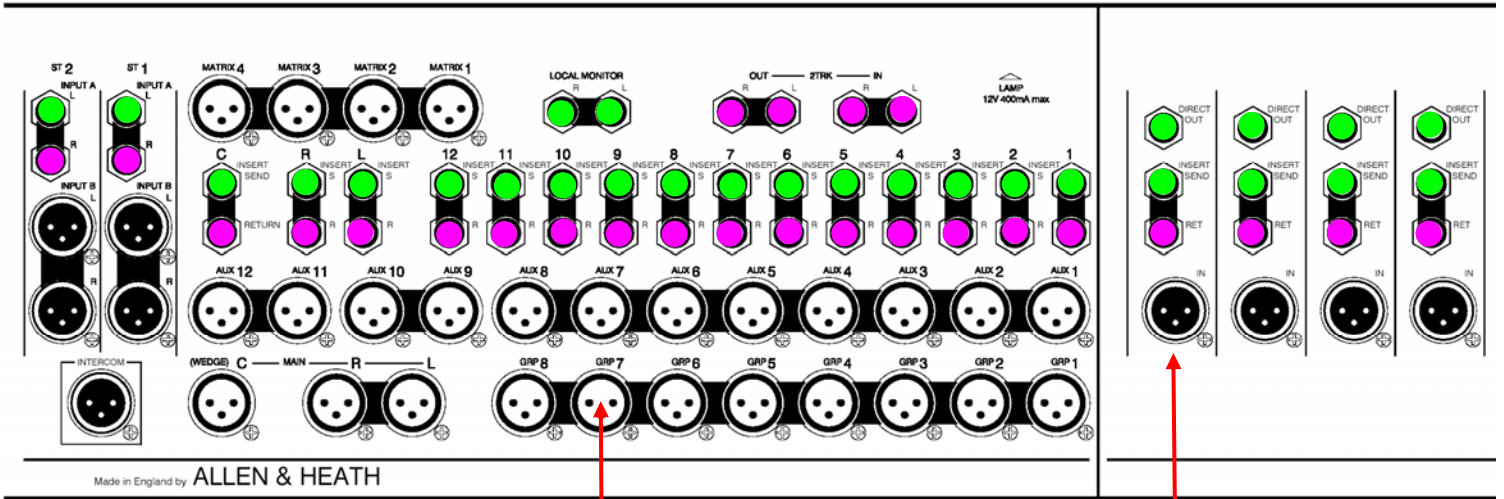
Parts must be ordered from our distributor in your territory. A list of international distributors can be viewed at <http://www.allen-heath.com/UK/distributors.asp>

UK parts must be ordered through an appointed A&H dealer or service centre. A list of UK service centres can be viewed at http://www.allen-heath.com/UK/service_centres.asp

POTS FADERS & KNOBS:




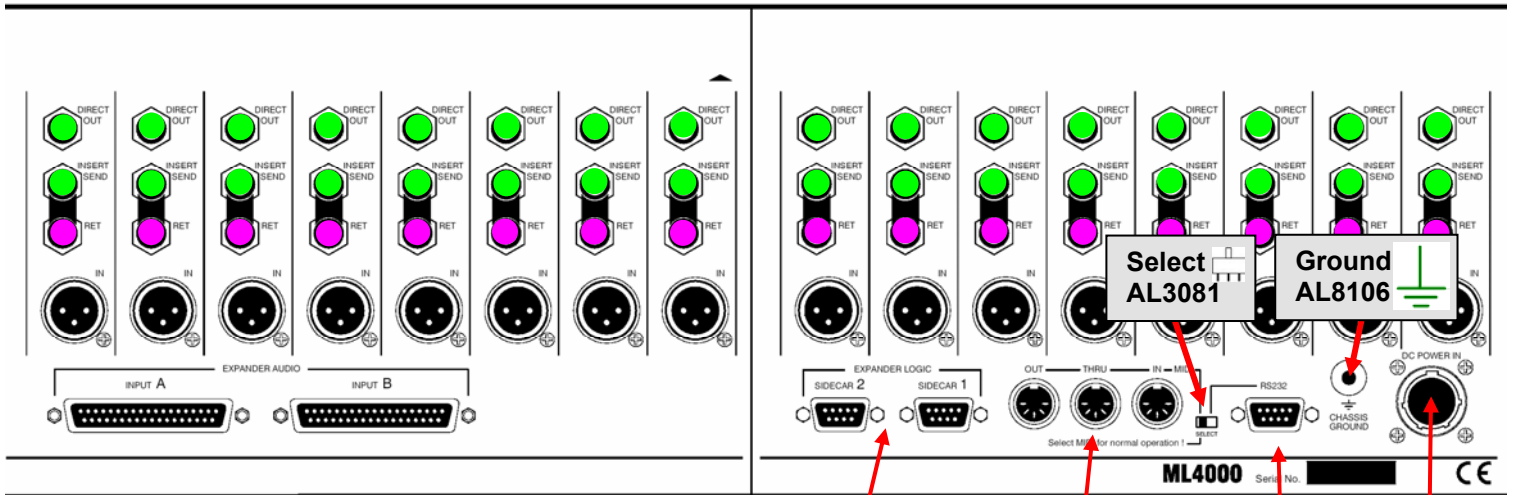






Made in England by ALLEN & HEATH

o/p XLR
AL2411 

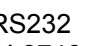
i/p XLR
AL2410 

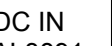


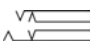

Expander i/p
AL3956 

Expander logic
AL3746 

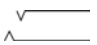

MIDI
AL3962 

RS232
AL3746 

DC IN
AL3891 

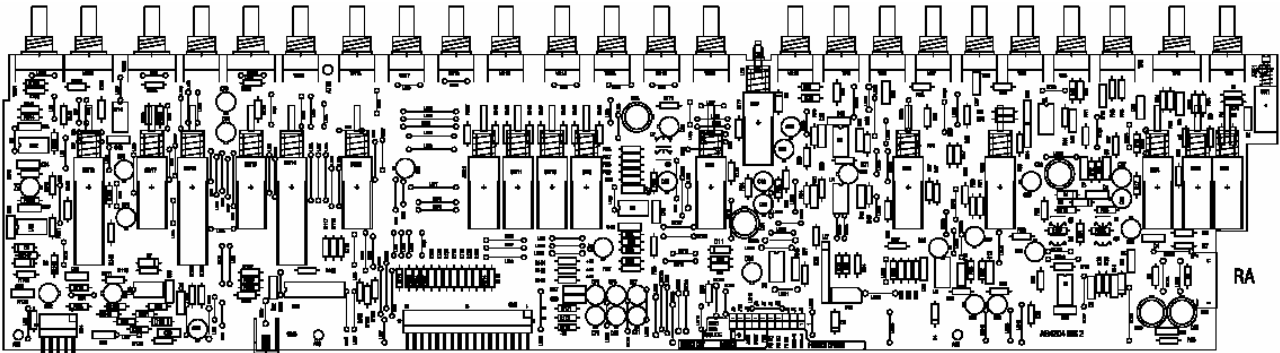
Jack switched AL3410  

Insert return
2TRK IN / OUT
ST1/2 R

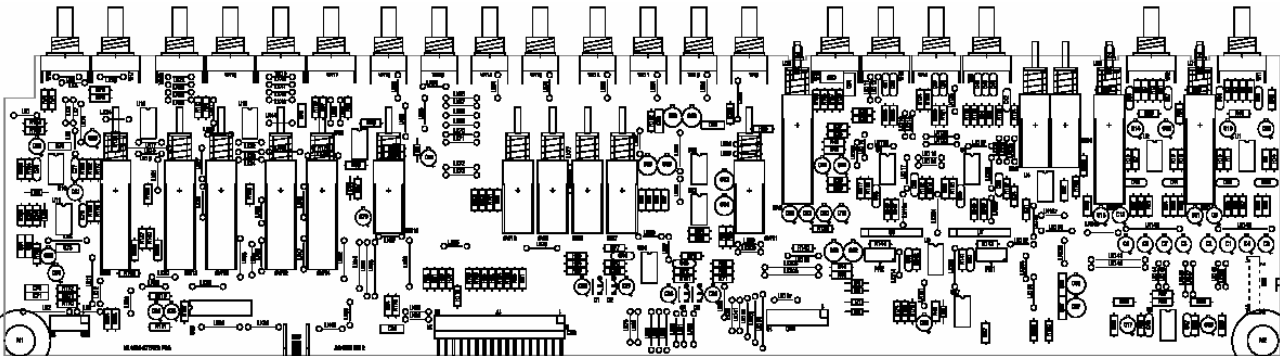
Jack un-switched AL3407  

Direct out
Insert send
Local Monitor
ST1/2 L

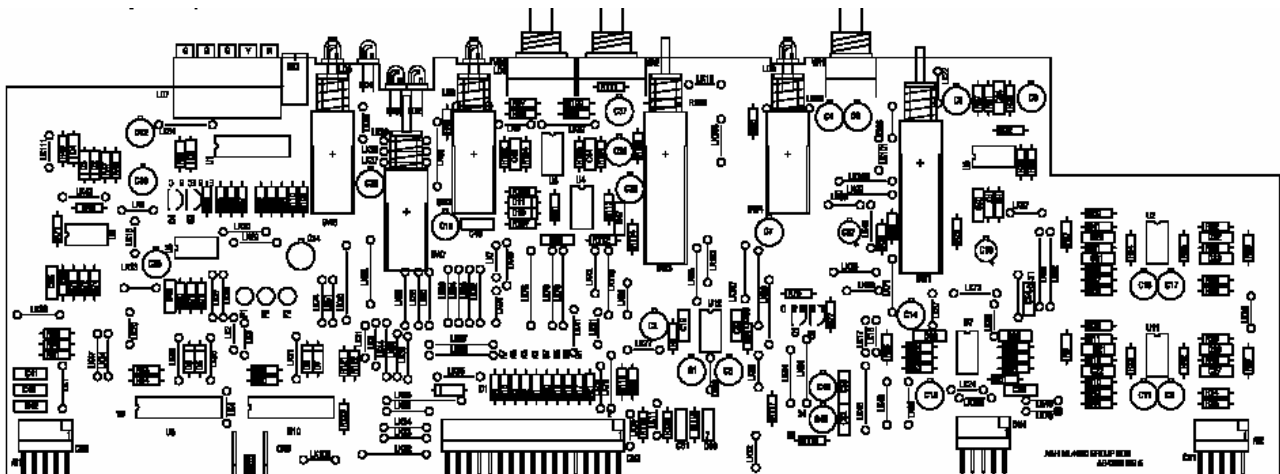
INTERIOR PARTS:



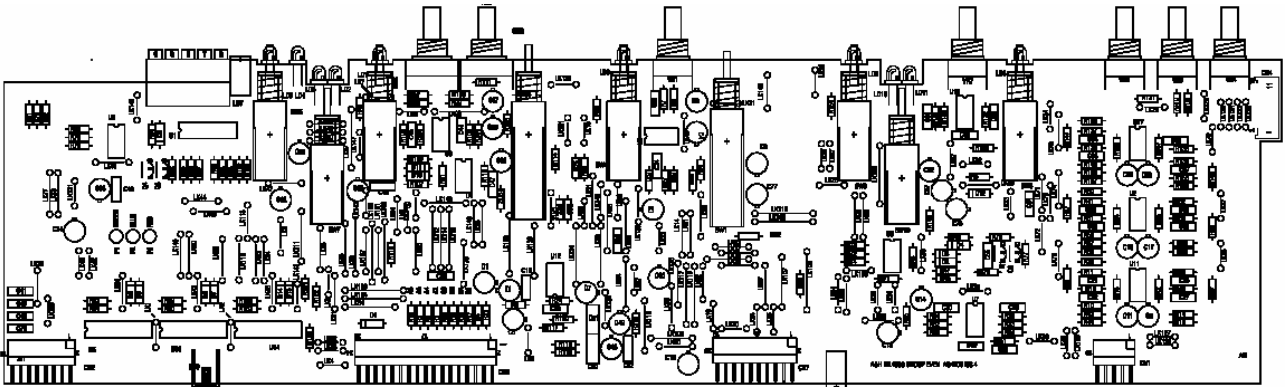
Mono i/p
002-649



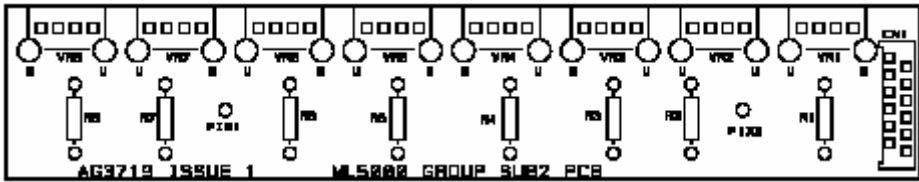
Stereo i/p
002-655



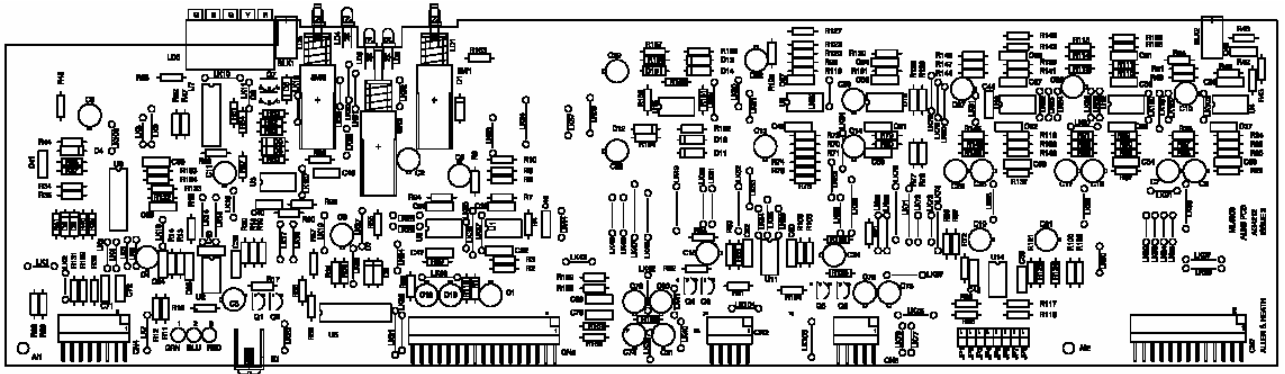
Group 1, 3, 5, 7
002-653



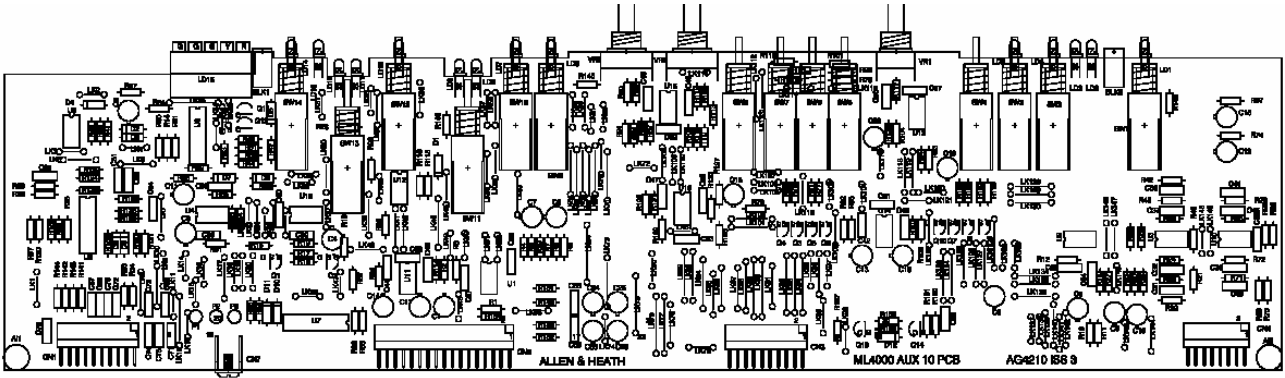
Group 2, 4, 6, 8
002-654



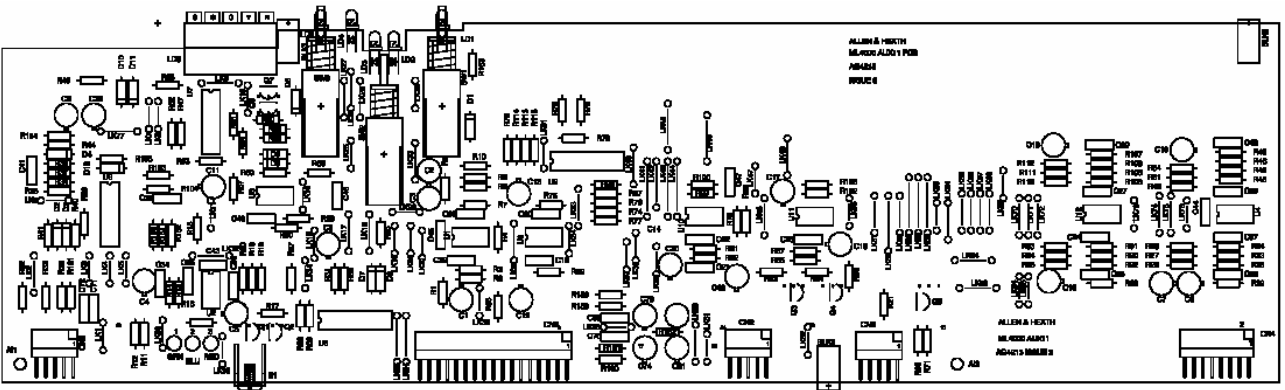
Group sub PCB
002-553



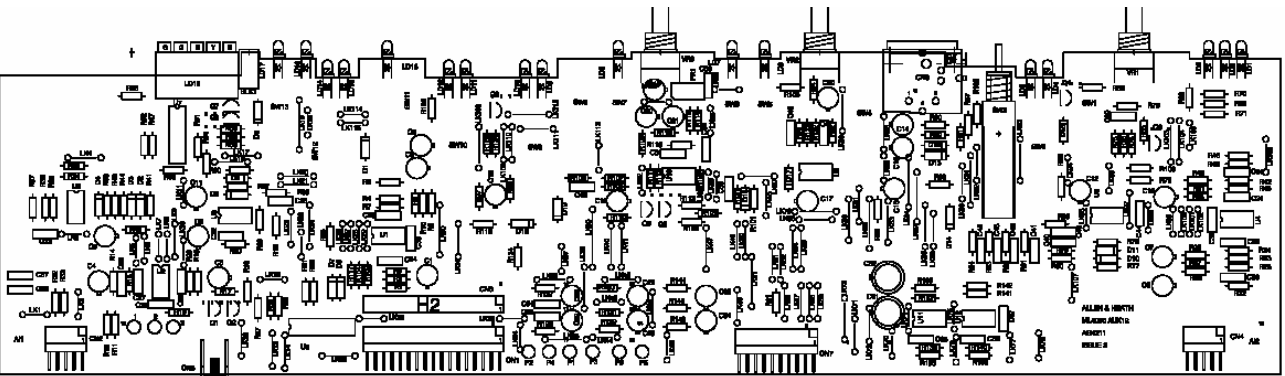
Aux 9
002-656



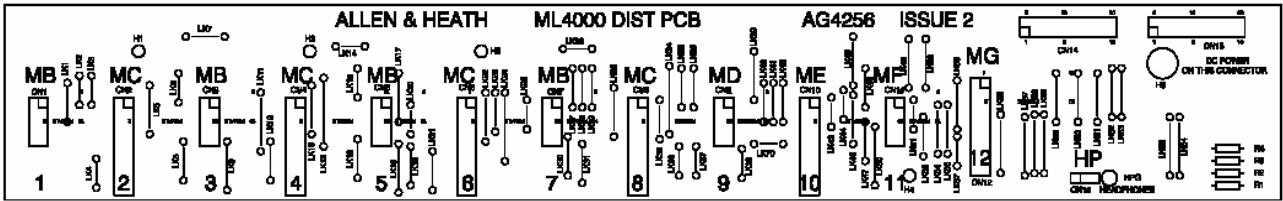
Aux 10
002-665



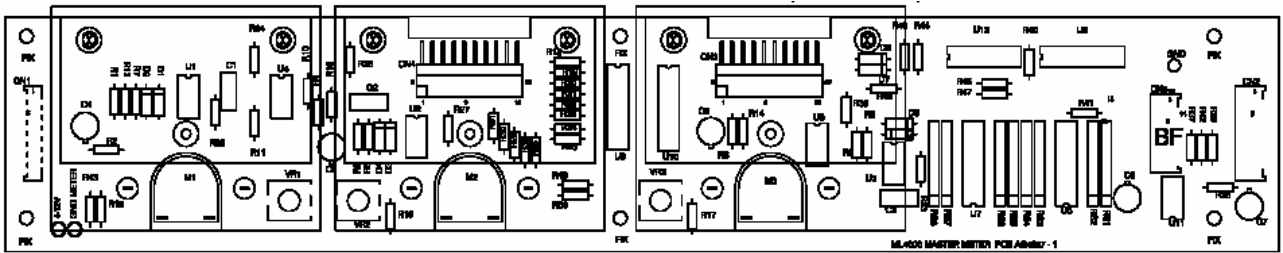
Aux 11
002-657



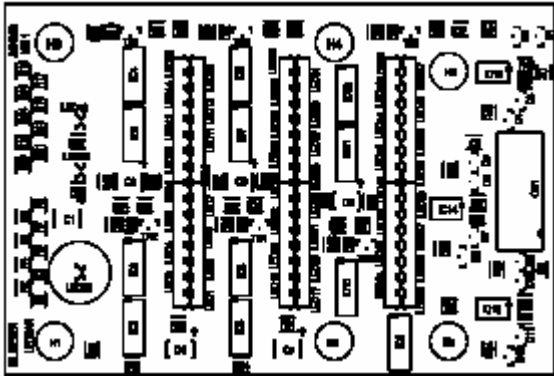
Aux 12
002-666



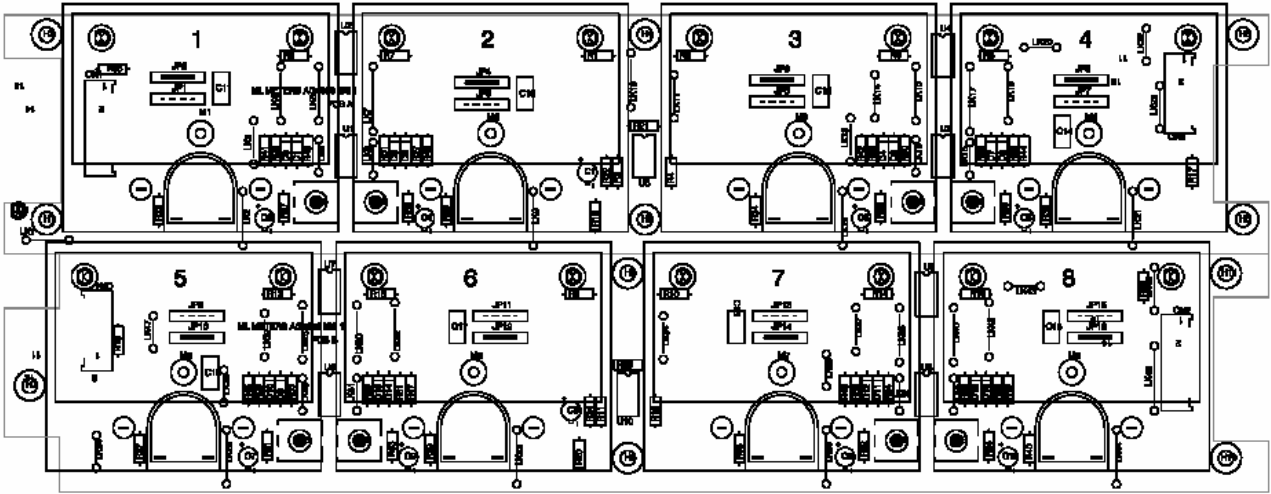
Master distribution PCB
002-667



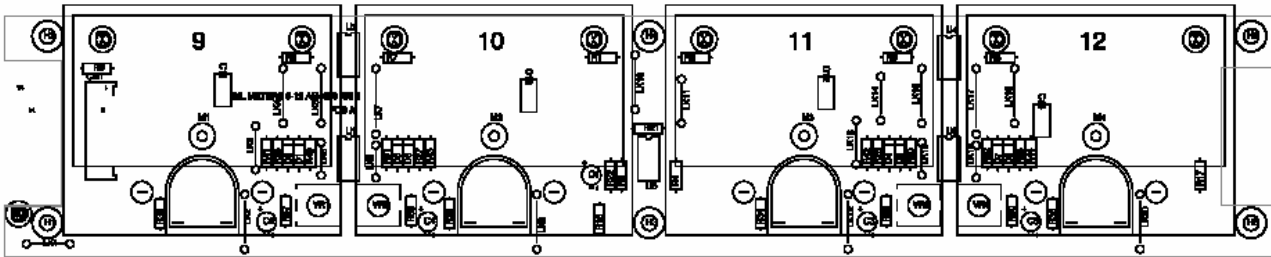
Master meter
002-714



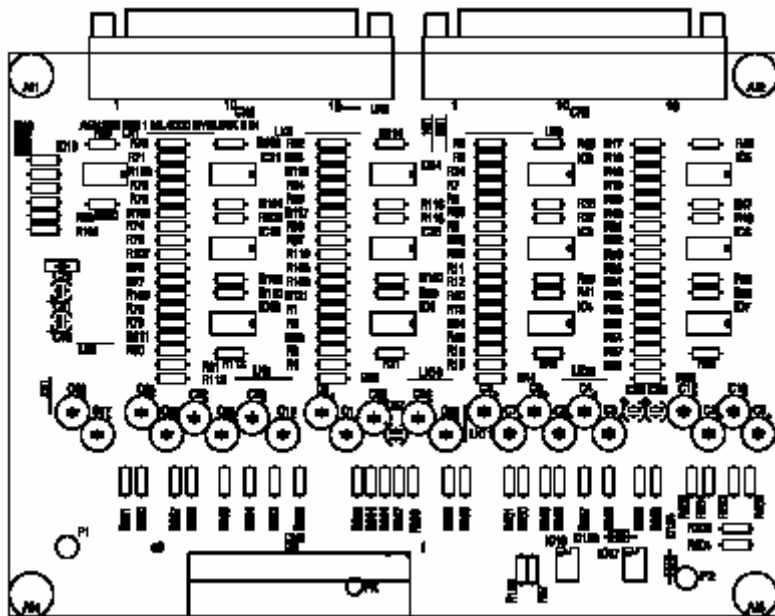
LED bar meter
002-713



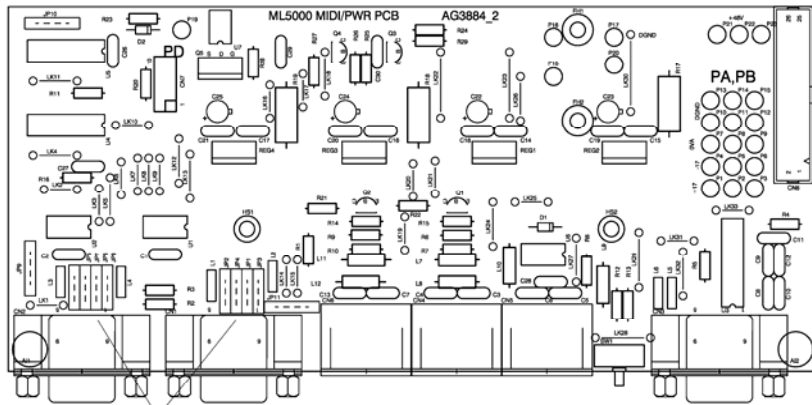
Meters 1 - 8
002-715



Meters Aux 9 - 12
002-694

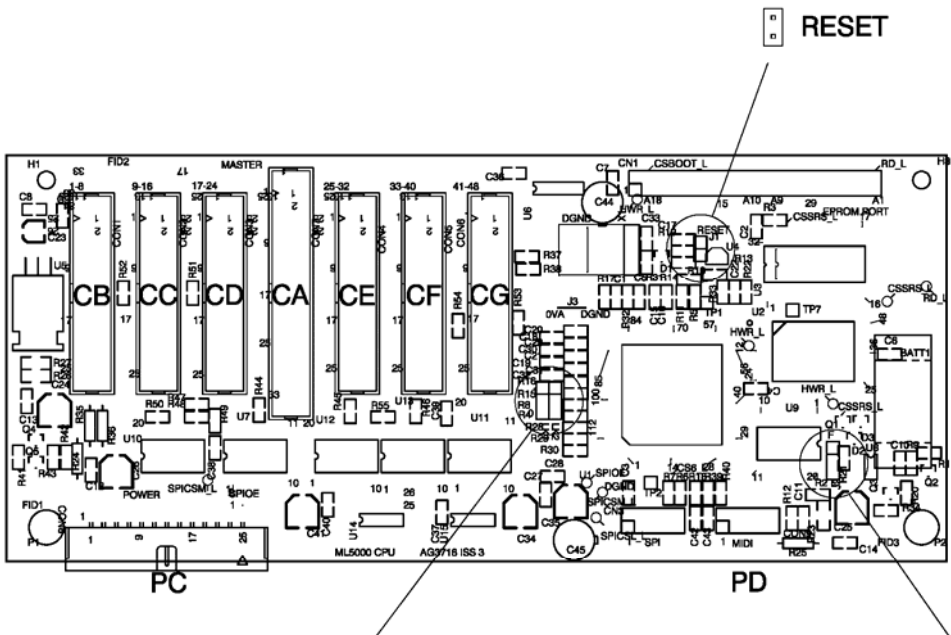










Expander Sys-link i/p
002-670



CONSOLE/SIDECAR ASSIGN LINKS

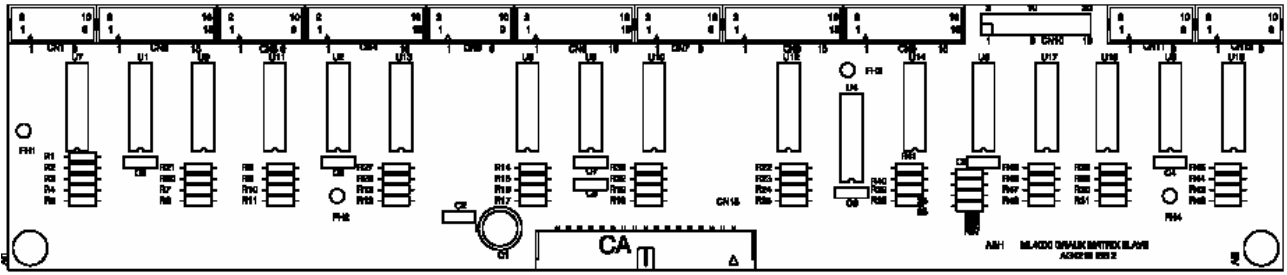
MIDI power PCB
002-575



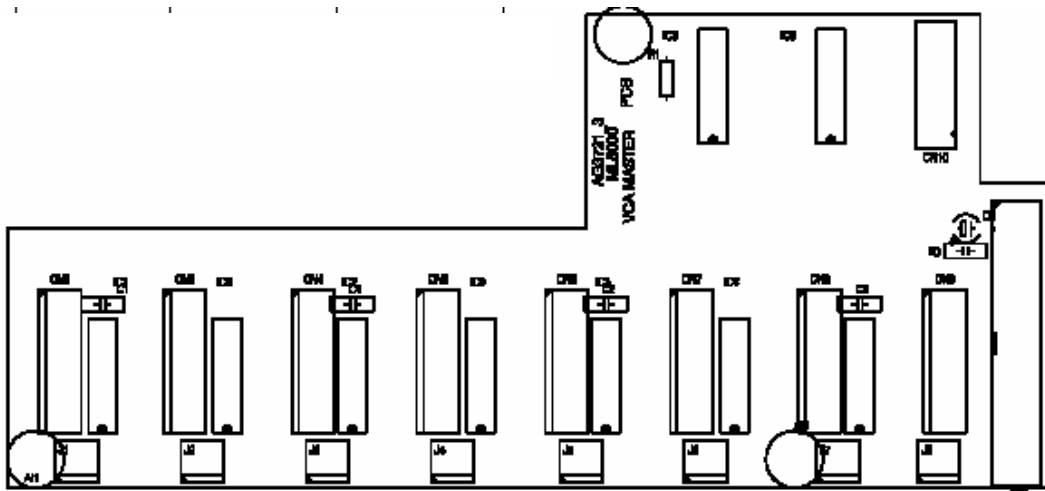
- | | |
|---|--|
| <p>1  ML4000 SIDECAR</p> <p>0  ML4000 CONSOLE</p> <p>1  ML5000 SIDECAR</p> <p>0  ML5000 CONSOLE</p> | <p>✓ F  FLASH (NORMAL)</p> <p>F  EPROM (BOOT LOAD)</p> <p>E </p> <p>S </p> |
|---|--|

ASSIGN LINKS ACCORDING TO CONSOLE TYPE

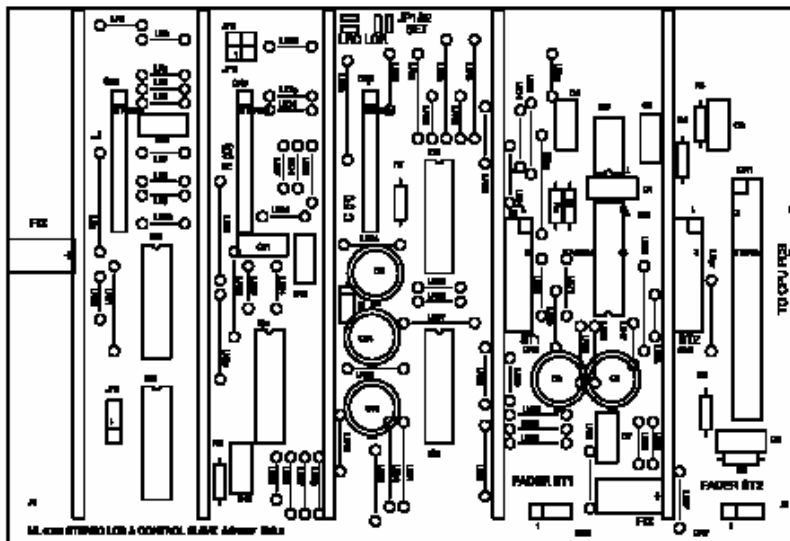
CPU PCB
002-550



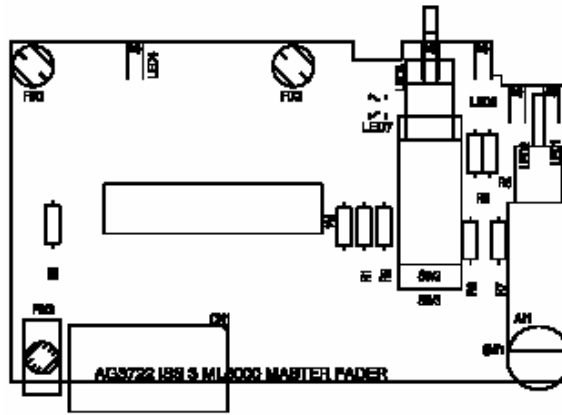
GRAUX master slave
002-661



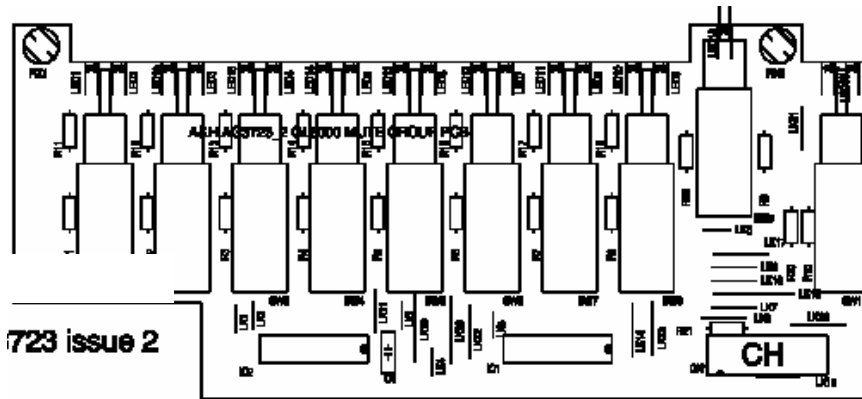
VCA master slave
002-567



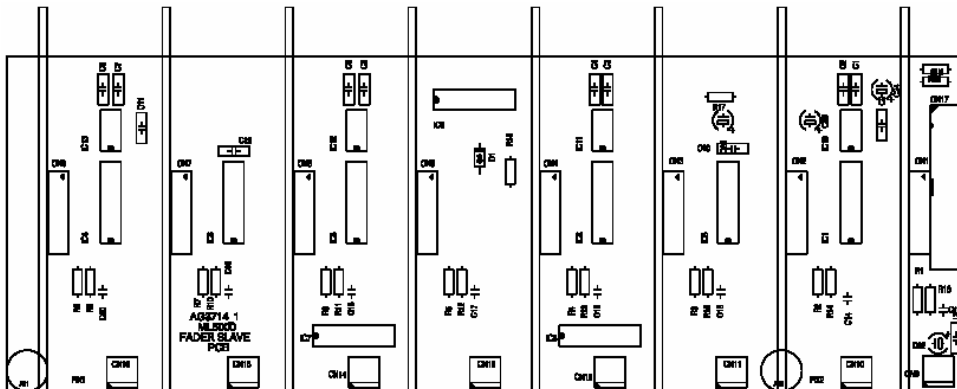
LRC stereo slave
002-659



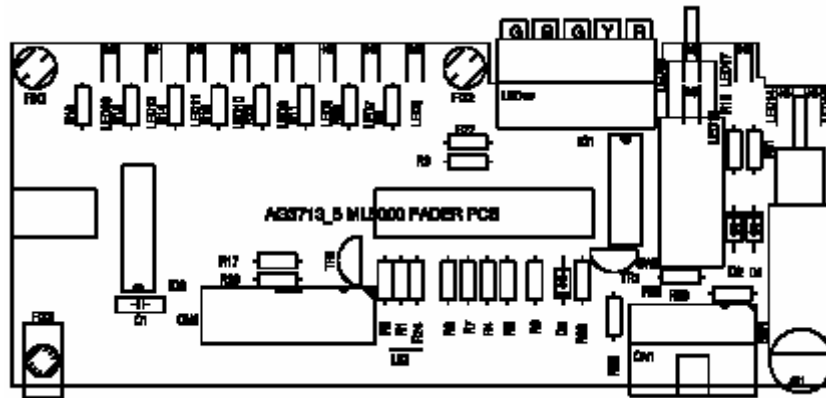
Master fader VCA 002-557
 Master fader L/R 002-588
 Master fader CTR 002-589



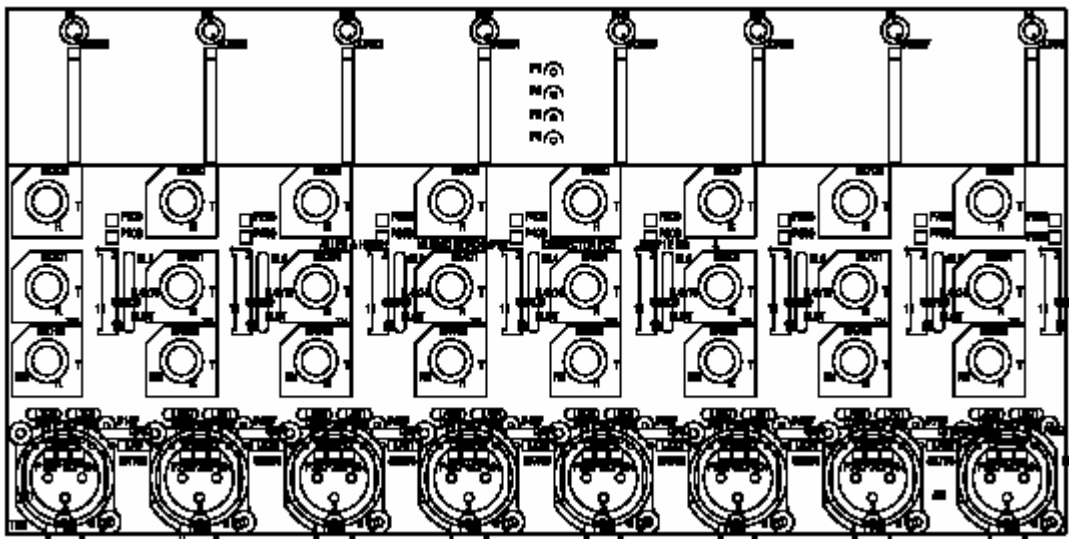
Mute group PCB
 002-563



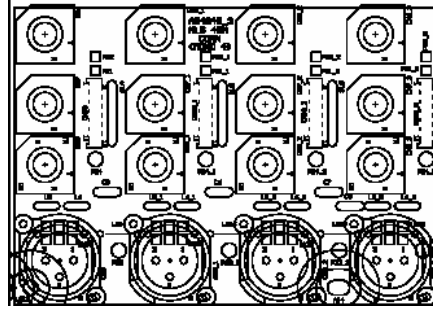
Mono fader slave
 002-551



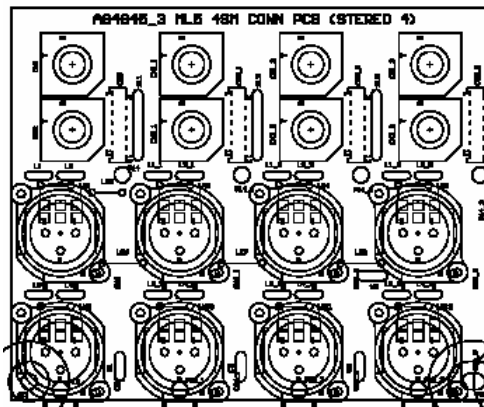
Mono fader PCB
002-530



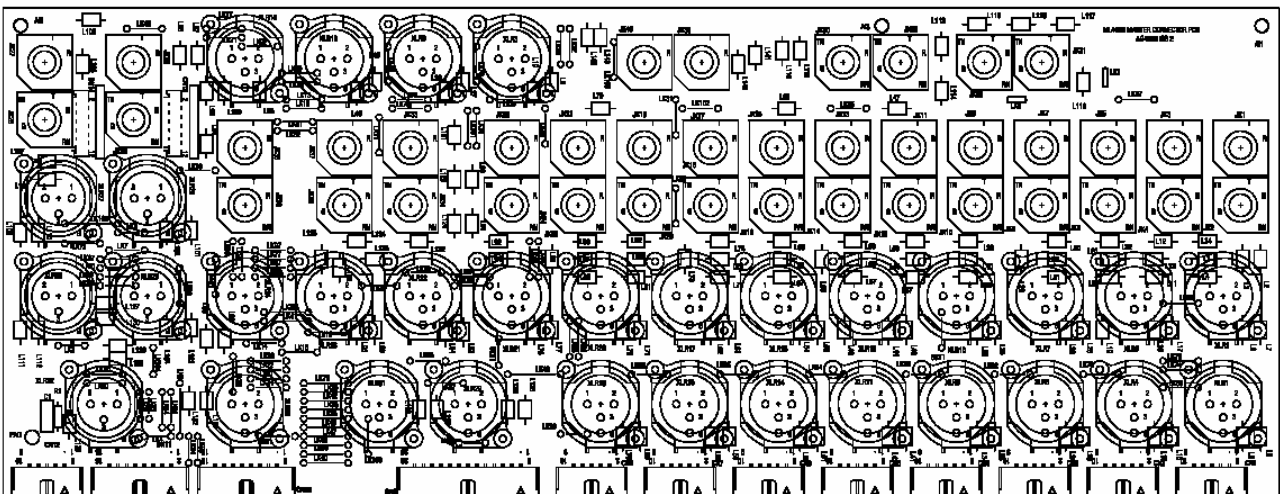
Mono connector
002-560



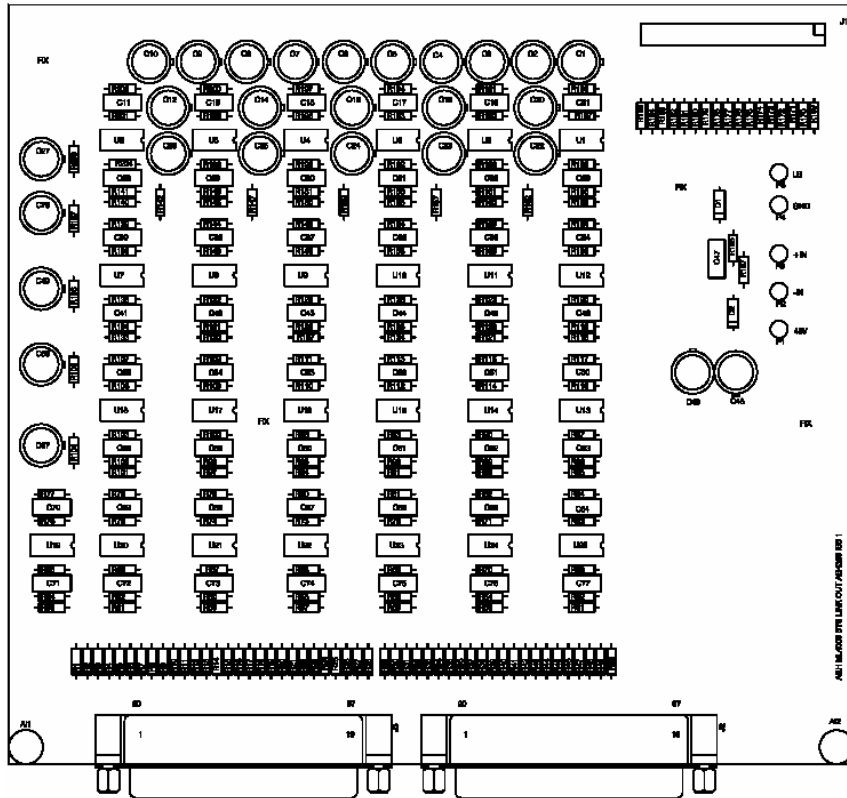
4M connector (B version)
003-188



4S connector (B version)
003-198



Master connector
002-662



Sys-link OUT
 002-696