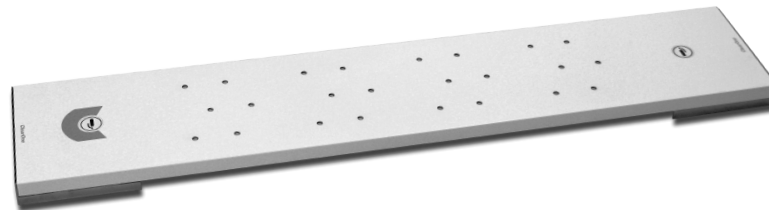


The Beamforming Microphone Array is the Pro-Audio industry's first professional-grade microphone array with beamforming and adaptive steering technology and ClearOne's next-generation Acoustic Echo Cancellation. The ultra-sleek design fits into any conferencing environment and delivers the clearest audio pickup available with adaptive acoustic processing.



Applications



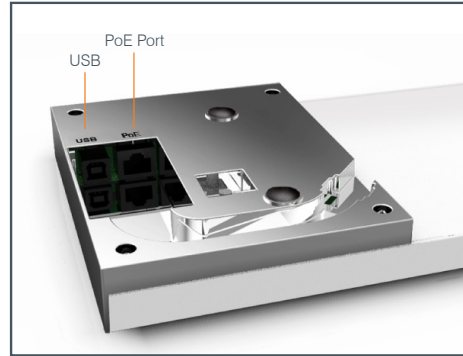
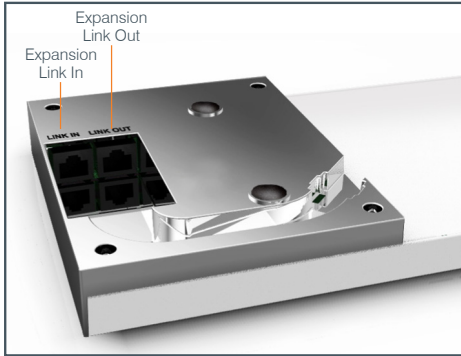
Board Room
Conference Room
Training Center
Courtroom
House of Worship
Telepresence

Features



- + Beamforming & adaptive steering technology
- + Next-generation Acoustic Echo Cancellation
- + 24 microphone elements
- + Mono and stereo modes for diverse applications
- + Flexible mounting for ceiling
- + Works with CONVERGE® Pro products: 880, 840T, 880T, 880TA
- + Expandable for larger room applications by daisy-chaining up to three arrays per CONVERGE® Pro unit
- + Adaptive acoustic processing automatically adjusts to room configuration for best possible audio pickup
- + Replaces up to 10 traditional microphones, with twice the pick-up range

BEAMFORMING MICROPHONE ARRAY CONNECTIONS



Functional Specifications

AUDIO

Acoustic Characteristics:
 24 microphones
 Auto voice tracking
Polar Pattern: Custom
Frequency Response: 150Hz - 16kHz
Signal to Noise Ratio: > 70 dB
AEC Tail time: 128 ms
Noise Cancellation: 6 - 15 dB adjustable

Auto Mixer Parameters:

Number of Open Microphones (NOM)
 First mic priority mode
 Last mic mode
 Maximum number of mics mode
 Ambient level
 Gate threshold adjust
 Off attenuation adjust
 Hold time
 Decay rate

Matrix Mixing Parameters:

1 Channel In
 18 Expansion Bus In/Out

Beamforming Mic Array Configuration:

Echo cancellation on/off
 Noise cancellation on/off
 Filters:
 All Pass
 Low Pass
 High Pass
 Notch
 PEQ
 ALC on/off
 Gain adjust
 Mute on/off
 Auto gate/manual gate

POWER

PoE IEEE 802.3AF-2003
 CAT-5 cable or higher
 6 watts average power consumption

EXPANSION BUS IN/OUT

Proprietary Network
 RJ-45 (2)
 Category 5 twisted-pair cable for 200 feet maximum cable length between any two CONVERGE Pro devices

USB

Not currently supported. Available for future use

RS232

Commands through CONVERGE Pro

CONFIGURATION & ADMINISTRATION SOFTWARE:

CONVERGE Console (4.x)

WEIGHT

4.4 lbs (2.0kg)

MECHANICAL

30.0" x 1.00" x 5.75" (WxHxD) (762mm x 25.4mm x 146mm)

MOUNTING

Ceiling mount kit with 12" spanner
 Ceiling mount kit with 24" spanner

ENVIRONMENTAL

Operating Temperature
 14° F/-10° C to 122° F/50° C ambient temperature

INSTALLATION

Optimum Mounting Height: About 8 - 10 foot ceiling
Optimum Coverage Distance:
 About 6 - 10 traditional cardioid mics
 About 2 - 3 ClearOne ceiling mic array
 About 8 - 10 foot radius

SUPPORTED CONVERGE PRO*

CONVERGE Pro 840T
 CONVERGE Pro 880
 CONVERGE Pro 880T
 CONVERGE Pro 880TA
 *Maximum 3 Beamforming microphone array per each supported CONVERGE Pro unit and maximum 16 units in one stack

PART NUMBERS

910-001-003: Beamforming Microphone Array
 910-001-004: PoE Power Supply & Cables Kit for BFM Array
 910-001-005-12: Ceiling Mount kit with 12 inch spanner for BFM Array
 910-001-005-24: Ceiling Mount kit with 24 inch spanner for BFM Array

ClearOne Contacts

North America
 Tel: 801-975-7200
 Toll Free: 800-945-7730
 TechSales: 1-800-705-2103
 Fax: 801-977-0087
 sales@clearone.com

Europe & Oceania
 Tel: +44 (0) 1189 036 053
 global@clearone.com

Asia Pacific
 Tel: +852 3590 4526
 global@clearone.com

Latin America
 Tel: 801-974-3621
 global@clearone.com

Middle East
 Tel: +852 3590 4526
 global@clearone.com