



XONE:SERIES

PROFESSIONAL DJ PRODUCTS

ALLEN&HEATH[®]

WWW.ALLEN-HEATH.COM



XONESERIES



ALLEN_HEATH

ALLEN&HEATH[®]



Welcome to the 2014 / 2015 Allen & Heath Xone collection.

Every one of the products within these covers has been designed with the passion and obsessive attention to detail that delivers great-sounding, reliable instruments that give years of service. Perhaps that's why so many of the world's most respected DJs put their faith in us and insist on having a Xone in the booth wherever they play.

Allen & Heath has been creating mixers for professional touring and recording studios since 1969. When we launched our first DJ mixers in 1999 we immediately raised the bar for audio quality, touring grade construction and design innovation. We will always be heavily indebted to the techno community, which wholeheartedly embraced Xone from day one. Over time we have won a loyal following among free thinking DJs playing across all the genre divides and working with all formats, from the vinyl-only purists to the hardcore controllerists and everyone in between.

Thanks to all the DJs and club techs whose ideas, feedback, support and friendship have contributed so much to our best ever Xone range.

Xone – used by the best DJs and clubs in the world.



Xone:23

2+2 CHANNEL DJ MIXER

Xone:23 is a 2+2 channel DJ mixer packed with pro features that would normally be found in the booth of a top-rated club, including an enhanced version of the legendary Xone filter with resonance control, VCA faders, 3 band total kill EQ, illuminated switches, crossfader curve selector and styling inspired by the flagship Xone:DB4.

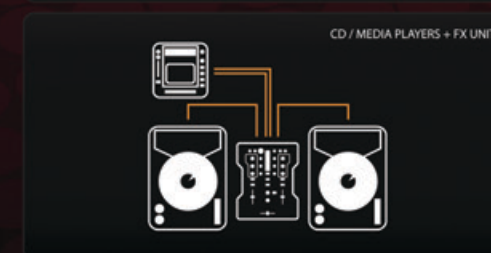


- 2+2 channels with dual phono/line inputs
- Mic input on balanced XLR, with 2-band EQ
- Balanced main mix out on XLR
- Independent booth out
- Record out
- 3.5mm and 1/4" headphone outputs
- Super smooth VCA channel faders
- User changeable crossfader
- Innofader compatible



- Touring grade build quality
- Crossfader curve switch
- 2mm Steel face plate
- 9-segment signal level monitoring
- 20dB pro standard headroom
- Ultra low distortion

EXAMPLE SETUPS



There are many imitations of the renowned Xone filter system – this is the real deal. Xone:23 features High Pass and Low Pass filters with frequency and resonance controls.



Seamlessly integrate your favourite external FX unit into your setup with send and return connections plus FX loop switching.



Both channels feature 3 band EQ Isolator, allowing you to creatively eliminate frequencies and bring them back into the mix with complete control.

XONE:23C

DJ MIXER + INTERNAL SOUND CARD

Xone:23C is the ideal companion for the digital DJ seeking to retain their hands-on mixings skills, or for artists who want the creative freedom to work with all kinds of music sources. Used standalone or hooked up to our Xone:K series controllers over X:LINK, Xone:23C is a cutting edge mix tool for the modern DJ.



Xone:23C ships with Mixvibes Cross LE DJ Software, providing DVS control and plug n'play mapping for Xone:K series controllers.

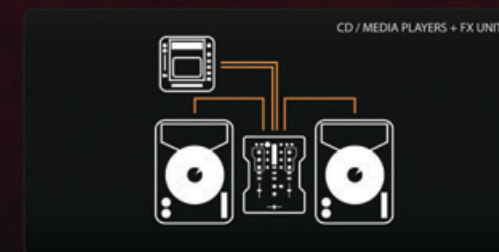
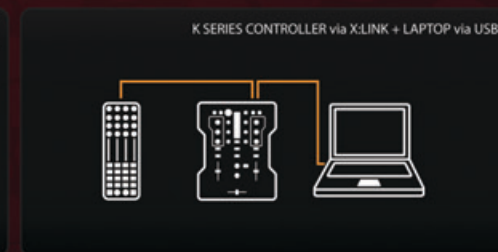
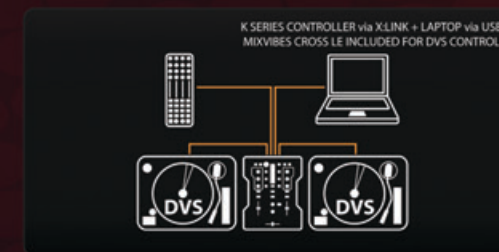


- 4 stereo channel 96kHz 24bit internal soundcard
- X:LINK for plug n' play connection to Xone:K series controllers
- Mixvibes Cross DJ LE software
- 2 channels with dual phono/line inputs
- Mic input on balanced XLR, with 2-band EQ
- Balanced main mix out on XLR
- 3.5mm and 1/4" headphone outputs
- Independent booth out
- Record out



- Touring grade build quality
- Super smooth VCA channel faders
- User changeable crossfader
- Innofader compatible
- Crossfader curve switch
- 20dB pro standard headroom
- Ultra low distortion
- 2mm Steel face plate
- 9-segment signal level monitoring

EXAMPLE SETUPS



96kHz 24bit 4 stereo channel USB soundcard which enables replaying and recording from your chosen DJ software, offering digital DJing with a real mixer.



There are many limitations of the renowned Xone filter system – this is the real deal. Xone:23C features High Pass and Low Pass filters with frequency and resonance controls.



Seamlessly integrate your favourite external FX unit into your setup with send and return connections plus FX loop switching.



Both channels feature 3 band EQ Isolator, allowing you to creatively eliminate frequencies and bring them back into the mix with complete control.

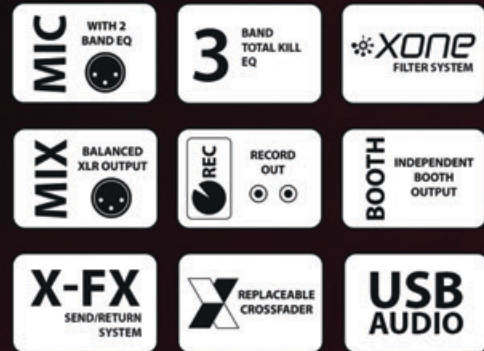
XONE:42

USB DJ MIXER

This progressive 4 -channel DJ mixer is designed for DJs of all abilities and experience from top pro DJs to bedroom enthusiasts who want a compact quality mixer with pro features to mix any source - whether vinyl, CD or MP3.

The USB port allows easy connection to a computer and the integration of digital media, which can be used to play back music files from a laptop, record mixes, or used with music software.

The revolutionary 'X-FX' control allows easy signal routing to external FX in combination with the Xone VCF filter system. Brimming with features, this compact mixer is a favourite in many DJ studios, bars and clubs.



- 4 dual stereo channels (2 phono/line, 2 line/line)
- 3 band EQ +6dB to total kill
- Rotary X-FX control for routing to external FX
- VCF filter with resonance & frequency controls
- VCA Crossfader with curve control
- Mix outputs on balanced XLR
- 9 segment channel meters
- Illuminated lightpipes showing status of performance controls
- USB port with one stereo up to PC and one stereo back
- Independent booth output
- XLR microphone input with 2-band EQ and level control
- 2 headphone outputs (1/4" and 3.5mm)
- Rack ears available

XONE:62

DJ / CLUB MIXER

Xone:62 is a classic favourite, renowned for superb audio quality, phenomenal VCF filters and creative 4-band EQ. The 6 dual stereo inputs, clear layout and ease of use quickly established the Xone:62 as the mixer of choice for many of the world's greatest DJs and club installs. If you need dependability and a sound that will elevate your mixes to the next level, get the Xone:62.



FEATURES

- Stereo aux send with pre/post switching
- VCF system - 2 stereo filters with frequency and resonance controls
- 4-band EQ with +6dB and -26dB cut
- P&G easy change professional VCA crossfader
- Monitor section - independent per-channel cue selection, split cue and aux
- Mix outputs on balanced XLR
- Independent booth output
- Stereo recording output
- Desk, custom rack or 19" rack mount
- High performance internal switch-mode power supply

XONE:92

DJ / CLUB MIXER

The industry standard Xone:92 is a versatile six channel analogue mixer, renowned for its expansive, involving sound. With its solid construction and easy to use interface, the 92 is on the riders of most of the world's top DJs and is a permanent fixture in the booth at many of the biggest superclubs.

The Xone:92 was one of the first professional DJ mixers to incorporate MIDI for control of DJ software or external devices, and the first to include the innovative dual VCF filters. With its two stereo FX sends, twin Mic/returns, and one of the best EQ sections around, this mixer is a DJ's dream tool.

For those who prefer to blend with rotary faders the Xone:92R is also available



- 6 dual stereo channels - 4 phono/line, 2 mono/mic or stereo return
- 2 independent stereo mix outputs
- 2 aux sends for output to external FX units
- VCF system - 2 independent stereo filters with frequency and resonance controls
- 2 independent LFO's for filter manipulation
- 4-band EQ - total kill on HF and LF, wide Q for cut, narrow Q for boost
- Booth output - dedicated output on TRS jack
- MIDI values can be output from 6 controls (e.g. crossfader, LFO)
- P&G easy change professional VCA crossfader
- Illuminated lightpipes showing status of performance controls
- Intelligent cue for pre or post EQ monitoring
- Monitor section includes post EQ switch, split cue and mix to cue balance
- 2 headphone outputs (1/4" and 3.5mm)
- Ducking control on mono/mic channel

XONE:4D

MIXER / MIDI CONTROLLER

Xone:4D is a unique DJ workstation combining a high quality analogue DJ mixer with extended software controller functionality. The 20-channel USB2 soundcard provides multiple routing options, enabling vast capabilities for live recording, sampling and playback. For the DJ who requires extended MIDI control of up to 4 software decks simultaneously, 4D is a luxurious hybrid controller to elevate your performance.



MIXER

- 4 multi-input stereo channels
- Switchable phono or line input stages, RIAA preamps on 3 channels
- Soundcard output routing switches for each channel
- 3-band total kill EQ +6dB to off
- 2 FX sends, FX1 with pre/post selection
- 2 analogue VCF filters - low, band & high-pass, resonance, frequency and 'on' switch
- 2 stereo returns
- BPM LED display
- Headphone monitor (3.5mm and 1/4" sockets) with mix/cue control
- Assignable LFO editable waveform
- Mic input on XLR with level control and 2-band EQ, routable directly to soundcard

USB 2.0 SOUND CARD

- 20 channel 96 kHz/24-bit USB 2.0
- 10 in/10 out (4 analogue + 1 digital stereo inputs and outputs)
- Soundcard inputs fed from mic, FX1, FX2, main mix or stereo channels 1-4 pre or post fade

MIDI CONTROL

- Total of 227 mappable MIDI messages can be sent from select mixer controls
- Shift mode function for double layer
- Compatible with any software that has MIDI assignable functions
- 105 MIDI controls, including dedicated MIDI sections containing:
 - 8x60mm linear faders
 - 16 detented rotary pots
 - 10 rotary encoders
 - 50 switches
 - 2 jog wheels
 - 8 illuminated push switches

XONE:DB2

PROFESSIONAL CLUB DJ FX MIXER

The Xone:DB range exploits the potential of digital mixer technology to bring you maximum DJ creativity. Flexible and versatile mixer controls with an intuitive layout give the DJ full control over the mix. The DB2 boasts twin chainable FX engines, four stereo channels, full Input matrix, and unique Tri-modal EQ system.

With its built in USB soundcard, MIDI control, Xone Filters and X:LINK connectivity, the Xone:DB2 unleashes the DJ's creativity.

The Xone:DB2 captures the essence of DB4 in a stylish, accessible, affordable format and blurs the boundaries between DJing, production and performance for the next generation.



Twin Chainable FX Engines

Massive FX Library

Boasting a massive FX library of more than 50 FX presets divided into 5 FX types: Delays/loopers, Reverbs, Resonators, Modulators and Damage, Xone:DB2 allows you to dig deep and get hands-on with your music. From subtle FX washes to total transformation of your sound - you're in control.

Editable FX Parameters

Each FX engine has a dedicated expression control and a rotary pot to set the wet/dry level, whilst further tweaking can be performed using the global controllers under the screen.



Input Matrix

Each of DB2's four input channels has a full input matrix that can select from four analogue (Line or RIAA), four USB, or two digital sources. The same source can also be selected on multiple channels.

Tri-modal EQ

Xone:DB2 adopts the fresh approach to creative equalisation introduced on DB4. The EQs can be used in three different modes - standard asymmetric EQ (+6/-26dB), total Kill (+6dB/OFF with a 24dB/octave slope), or High-Pass/Low-Pass filter with adjustable resonance.

Mic/Line Input

With 2 band EQ, gain, cue and mix level and with full access to FX.

Integral soundcard

The built-in, multi-channel USB2 soundcard allows replay and recording from computer-based audio software for 4 stereo sends and 4 stereo returns.

MIDI control

All controls (except Mic and Phones level) send MIDI data. The mixer can double up as a MIDI controller for DJ software via the MIDI shift button, which allows the FX selection controls to send MIDI data without changing the mixer settings.

X:LINK

X:LINK uses a standard RJ45 connector and distributes power and data, allowing connection to Xone:K series controllers, saving USB ports on your computer.

XONE:DB4

ULTIMATE PROFESSIONAL CLUB DJ FX MIXER

The Xone:DB4 is a truly ground-breaking mixer and by far the most advanced product that we have designed. Every feature has been meticulously researched with a view to offering DJs ultimate creativity.

As the loops and FX are automatically synchronised to the tempo of the track, it is very easy to build some amazing grooves and soundscapes without problems of latency, low fidelity and the general hassle often associated with using software and laptops.

The flexible input matrix allows any audio source to be selected on any or all of the channels. Different processing can be applied to the same track on separate channels and you can fade between them, or a phrase sampled in the looper of one channel can be added to the mix later in the track.



- FULL MIDI CONTROL
- 16 CHANNEL USB SOUND CARD
- 4 FX ENGINES
- DUAL XONE FILTER SYSTEM
- SELECTABLE TRI-MODAL EQ
- MIC WITH 2 BAND EQ
- 4 LOOPERS
- INPUT MATRIX SYSTEM
- USB XLINK

Quad FX Core

The heart of the Xone:DB4 is the powerful Quad FX Core DSP engine, enabling each channel to have its own FX bank and BPM detection system, which automatically adjusts all time-related FX and loops to the tempo of the music.

There are 5 studio quality FX types optimised for DJ use - delays, reverbs, modulators, resonators and damage - plus each FX type has a library of different effect variations. Each FX bank has a dedicated expression control and a rotary pot to set the wet/dry level, whilst further tweaking can be performed using the global controllers in the FX master section.



Looper

Each channel has a built-in looper, with selectable loop length from 1/16 beat to 4 bars. DB4 will always record the full 4 bars, so the loop can be expanded or shrunk at will.

Source Select

Each music channel can select any of the available stereo music sources: Analogue Line 1-4 (switchable to Phono on 2-3), Digital 1-4 or USB 1-4.

Tri-modal EQ

Each music channel has a 3-band EQ that can be configured as standard asymmetric EQ (+6/-26dB), Isolator (+6dB/OFF with a 24dB/octave slope), or reconfigured as a High-Pass/Low-Pass filter system with adjustable resonance. EQ knob pointers change colour to show which type of equalization is active.

Mic/Line Input

The Mic/Line input has 2-band EQ, gain, cue and mix level. This can also be routed to channel 1 for adding FX.

Integral Soundcard

A built-in, high quality (24-bit / 96kHz), multi-channel, fully patchable USB2 soundcard allows replay and recording from audio software for 4 stereo sends and 4 stereo returns.

USB

User-defined settings such as meter mode, BPM range, USB audio routing scheme and display brightness can be saved to a USB key for recall on another DB4.

MIDI control

All controls (except Mic and Phones level) send MIDI data and the mixer can double up as a MIDI controller for DJ software via the MIDI shift button, allowing the Loop and FX selection controls to send MIDI data without changing the mixer settings.

X:LINK

X:LINK uses a standard RJ45 connector and distributes power and data allowing connection to Xone:K series controllers, saving USB ports on your computer.

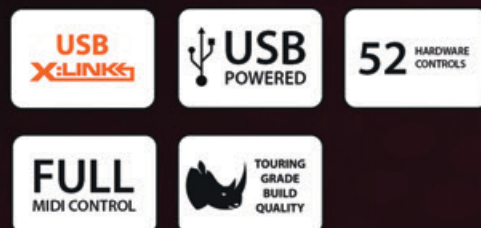
XONE:K1

PROFESSIONAL DJ MIDI CONTROLLER

Xone:K1 is a compact, slim line DJ MIDI controller that lets you define and customise your workflow and mixing experience with your chosen DJ or production software. The :K1 can be easily set up for fast access to level controls, triggering hot cues, adding FX and instant looping, freeing you to concentrate on the music, not on the laptop screen.

The Xone:K1 offers a total of 52 assignable controls for mapping to Traktor Pro, Ableton, Virtual DJ, MixVibes and more. Controls include 6 endless rotary encoders with push switch, 12 analogue pots, 4 linear faders, and 30 backlit performance switches with three-colour illumination.

Xone:K1 is powered over USB, so there's no need for a separate power cable, and it can be daisy-chained with other :K1s and Xone:K2s over X:LINK, cutting out the need for a separate USB hub. The Allen & Heath X:LINK protocol also lets you expand your setup by connecting directly to Xone:23C, :DB2 and :DB4 mixers.



Universal

Xone:K1 is a universal controller and is perfect for use with all leading DJ software, such as Ableton, MixVibes, Virtual DJ, Mixx and Traktor Pro. Xone:K1 can even be used to control lights or VJ software.

Create Your Perfect Setup

Quick and simple mapping lets you create a unique layout that mirrors your style and puts the functions that matter at your fingertips, whilst 3 colour illuminating switches give at-a-glance feedback – allowing you to work however you decide.



Expand Your Control

Xone:K1 can be linked to additional Xone:K1s and Xone:K2s via our X:LINK protocol to expand your control capability even further. X:LINK uses a standard RJ45 connector and distributes power and data, which means two Xone:K series controllers can be connected to your software using only one of your precious USB ports. X:LINK also lets you connect to Xone:DB4, Xone:DB2 and Xone:23C mixers.

Style With Strength

Its slimline chassis, soft touch controls and minimal looks set Xone:K1 apart from the pack. There's plenty of substance too – Xone:K1 is built to Allen & Heath's renowned quality standards, including the use of steel nuts on all rotary controls to protect the circuitry from impact damage.

Deluxe carry case available separately.

XONE:K2

PROFESSIONAL DJ MIDI CONTROLLER

Xone:K2 is a compact, slim line MIDI controller incorporating a 4 channel soundcard, for use with any DJ software.

With 52 hardware controls providing up to 171 MIDI commands across 3 layers – plus the ability to link multiple units using X:LINK – Xone:K2 puts you in control of the functions and features of your chosen software.

Latching Layers

A Latching Layers system lets you assign controls to multiple layers, so a single physical control can be given up to 3 functions. You can configure all, some or none of K2's controls to be linked to the Latching Layers system. As a quick visual reminder, when toggling through layers all switches assigned to a particular layer will illuminate in the appropriate colour.



Case / Stand

Xone:K2 comes packed in a black padded case as standard. As well as keeping it safe on the road, the case doubles as a stand, elevating the K2 up to the same height as most pro DJ mixers.



- Controls any DJ software
- USB powered
- Built-in 4 Channel 48kHz soundcard
- 52 hardware controls
- 6 endless rotary encoders with push switch
- 4 linear faders
- 30 backlit switches
- 171 MIDI commands
- 3 coloured Latching Layers
- X:LINK connectivity
- Start-up mappings included
- Carry case / stand included



MIDI Control

Xone:K2 is a compact MIDI Controller for use with any DJ software such as Ableton, Virtual DJ, MixVibes, Mixx and Traktor Pro. Xone:K2 can even be used to control lights or VJ software – if it can receive MIDI data it can take commands from K2. What each control does is entirely up to you - you can create a completely customised layout that perfectly fits the way you want to work. We also provide maps to get you started out the box and information on how to set up your own.

Audio Interface

Xone:K2 has a high quality internal, four channel (2 stereo) soundcard. Setup options include using the K2 with a pair of headphones, feeding a pair of headphones and a PA system, or connecting to an external DJ mixer.

Construction

Its slim line chassis, soft touch controls and minimal looks set K2 apart from the pack. There's plenty of substance too – Xone:K2 is built to Allen & Heath's renowned touring grade audio and build quality standards, including the use of steel nuts on all rotary controls to protect the circuitry from impact damage.



X:LINK

Two or more K2s can be linked via our X:LINK protocol, expanding the control capability. X:LINK uses a standard RJ45 connector and distributes power and data, allowing connection to X:LINK compatible devices, including Xone:DB4, DB2 and 23C mixers to expand MIDI data without using additional USB ports.



XONE:S2

DJ / INSTALLATION MIXER

The Xone:S2 is the answer to club installers' and bar owners' prayers. In addition to the renowned Xone audio and build quality, S2 is packed with features to save venues time, money and hassle. Top of the list is a built-in output level limiter. Once the limiter has been set to the desired maximum level (via the recessed control on the rear panel), the venue owner can relax, knowing that no matter how much the DJ winds up the gain the output will remain constant. This feature alone makes S2 perfect for venues in environmentally sensitive areas, or where less experienced DJs are booked.

Xone:S2 also has a remotely controlled Zone output, enabling staff to independently adjust the level in a separate area of the venue (e.g. in a bar area or lounge). If needed, the manager can even control the entire mix output from their office.

The Xone:S2 also includes circuitry to interface to alarm systems that mute the music channels if triggered, but still leave the Microphone channels open for safety announcements. A separate input for pre-recorded announcements, such as evacuation messages, is also included.

A separate Mono output with a switchable low-pass filter eliminates the need for a separate cross-over if you want to feed a sub-bass system. The USB audio interface enables playback and recording to or from a PC/MAC, or can be used to create an FX loop.



Rotary fader option kit.



- 4 stereo music channels
- 2 Mic inputs with inserts (switchable to line)
- Output Limiter system
- USB audio send/return
- Xone Filter system
- 3 Band Total Kill EQ (+6dB/Off)
- Remote control Zone feed
- Alarm Interface
- Tamper proof input level trims
- Master Insert point
- Booth output
- Mono Feed with Sub-bass filter
- Front panel Auxiliary stereo input
- Linear or Rotary faders

XONE:464

DJ / INSTALLATION MIXER

Here's where it all started. As the first model in the range, the Xone:464 paved the way with superior sound and build quality never seen before in a DJ mixer. A dedicated club mixer, designed to please both club technicians and the performing DJ, its combination of versatility and fine craftsmanship mean it is still the first choice for venues where DJs and engineers are serious about their music.

It shares the same solid construction as Allen & Heath's pro touring desks, so venues can depend on it for outstanding audio and reliability, whilst the renowned Xone analogue filters and 4-band asymmetric EQ make it an incredibly creative tool for DJs to enjoy. The 4 fully-featured mic/line inputs mean live performers can join the mix, adding a new dimension to the stunning feature set.

4 BAND EQ

6 STEREO CHANNELS

6 AUX SENDS

XONE FILTER SYSTEM

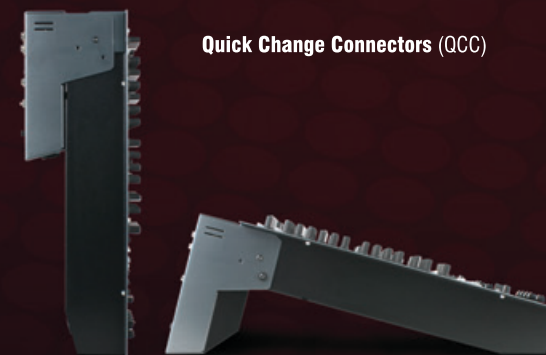
4 MIC / MONO CHANNELS

2 STEREO MIX OUTPUTS

REPLACEABLE CROSSFADER

BOOTH INDEPENDENT BOOTH OUTPUT

TOURING GRADE BUILD QUALITY



Quick Change Connectors (QCC)

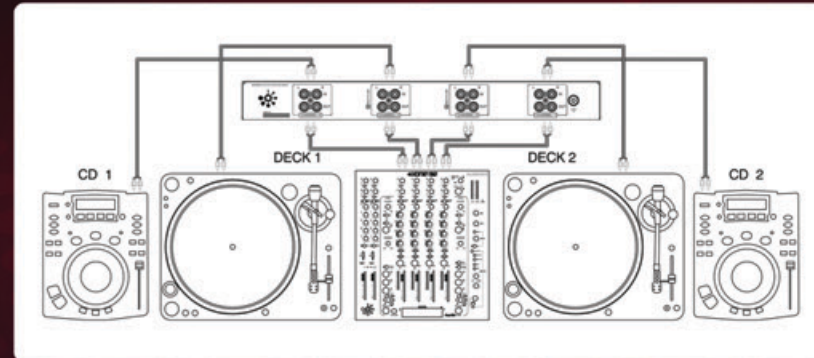
- 4 fully-featured mono/mic performance channels with 100mm faders
- 6 dual stereo channels with RCA and TRS sources on each channel
- 2 independent outputs on XLR or TRS, with full metering
- 6 aux sends from every channel for monitors or FX sends
- 4 stereo, 2 mono zone outputs with rotary control
- Xone filter system - 2 independent stereo filters with frequency and resonance control
- 4-band EQ with +6dB and -26dB cut
- 2 headphone outputs, split cue, mono sum button, booth output
- P&G easy change professional VCA crossfader
- Comprehensive booth monitor system
- Desk or 19" rack mount

XONE:PB

PATCH BAY

Designed to simplify DJ changeovers in busy club line ups, the Xone:PB is a passive interface box providing a quick and easy solution for connecting digital vinyl control systems (DVS) and DJ sound cards.

Eliminating the need to re-patch the installed mixer every time a DJ wants to use a DVS system, a patch bay quickly becomes an essential facility, keeping the booth free of excess cabling and helping to improve system integrity.



FEATURES

- Two switchable inverse RIAA filters, enabling line level sources to be connected to the phono preamplifiers of the mixer
- Common mode noise attenuation filtering on all external inputs to help reduce laptop power supply noise
- Earth lift switch to help prevent ground loops
- 1U rack size

XONE XD2-53

Like Allen & Heath's Xone series mixers, Xone headphones are the first choice for many of the world's top DJs.

The XD2-53s have a closed-ear design, providing excellent isolation from ambient noise, making them ideal for DJs working in loud environments.

The 53mm drivers deliver an extremely high performance, with an extended low frequency response.

The rotating earpieces with soft earpads allow easy one-ear monitoring and the adjustable, metal reinforced headband ensures excellent wearing comfort.

Xone XD2-53s come in a stylish gunmetal finish and feature a detachable coiled cable.



FEATURES

- Designed to excel in high noise DJ booth environments
- Touring grade build quality, including metal reinforced headband
- 53mm diameter drivers with high power neodymium magnet design
- Detachable coiled cable with 3.5mm connector and 1/4" jack adaptor
- 3500mW power handling
- Rotating earpieces for easy one-ear monitoring
- Long listening comfort
- Folding design for portability
- Carry pouch included



ALLEN&HEATH®

 **XONE:SERIES**

PROFESSIONAL DJ PRODUCTS

