

### Battery Eliminator for SM Series Transmitters



- Allows external powering of all SM Series transmitters with 6 to 36 volt DC
- Fits in place of standard battery door on single and dual battery models
- Locking power connector
- Protected against shorts and reverse polarity

The battery eliminator assembly is secured to the transmitter housing with a thumbscrew in the same manner as the standard battery doors.



The SMBATELIM provides regulated 1.8 volts DC up to 1 amp to power all SM Series transmitter models for extended or continuous operation. The assembly is mounted to the transmitter housing in the same manner as the standard battery door. Circuitry is contained in a cylindrical housing in place of an AA battery, with a locking power connector.

The panel is notched for use on dual battery models so that a battery cannot be trapped in the unused compartment. An insert for the unused compartment is included to protect against dust and moisture.



The battery eliminator assembly mounts in place of the standard battery door.



Battery compartment cap P/N 21542

# Specifications

Input:	6.0 VDC minimum; 36 VDC maximum 400 mA minimum required at 6 VDC
Output:	1.8 VDC regulated 1.0 A maximum rating 2.0 A activates internal current limiting shutdown
Connector:	Coaxial type; locking LZR; RL26AE
Dimensions:	2.375 x 1.830 x .642 inches 60.0 x 46.5 x 16.3 mm
Weight:	0.8 ozs.; 23 grams

This equipment has been tested and found to comply with the limits for a Class B digital device, pursuant to Part 15 of the FCC Rules. These limits are designed to provide reasonable protection against harmful interference in a residential installation. However, there is no guarantee that interference will not occur in a particular installation. The device generates, uses and can radiate radio frequency energy and, if not installed and used in accordance with the instructions, may cause interference to radio receivers.

If this equipment does cause harmful interference to radio or television reception, which can be determined by turning the equipment off and on, the user is encouraged to try to correct the interference by one or more of the following measures:

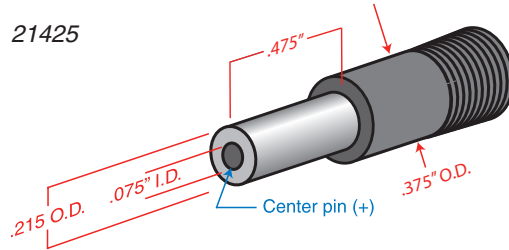
- Reorient or relocate the receiving antenna
- Increase the separation between the equipment and receiver
- Connect the equipment into an outlet on a circuit different from that which the receiver is connected
- Consult the dealer or an experienced radio/TV technician for help

Changes or modifications to this equipment not expressly approved by Lectrosonics, Inc. could void the user's authority to operate it.

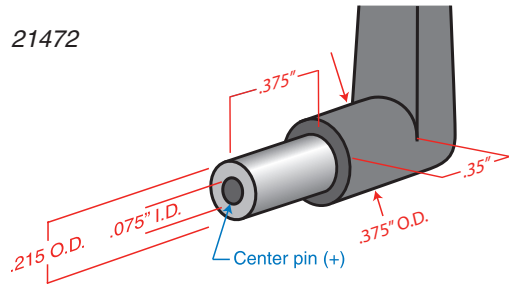
This device complies with Part 15 of the FCC Rules. Operation is subject to the following two conditions: (1) This device may not cause harmful interference, and (2) this device must accept any interference received, including interference that may cause undesired operation.

## Mating power plug dimensions

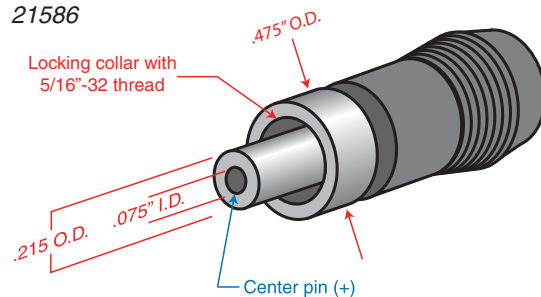
21425



21472



21586



581 Laser Road NE • Rio Rancho, NM 87124 USA • [www.lectrosonics.com](http://www.lectrosonics.com)  
(505) 892-4501 • (800) 821-1121 • fax (505) 892-6243 • [sales@lectrosonics.com](mailto:sales@lectrosonics.com)