

# TSW-1060

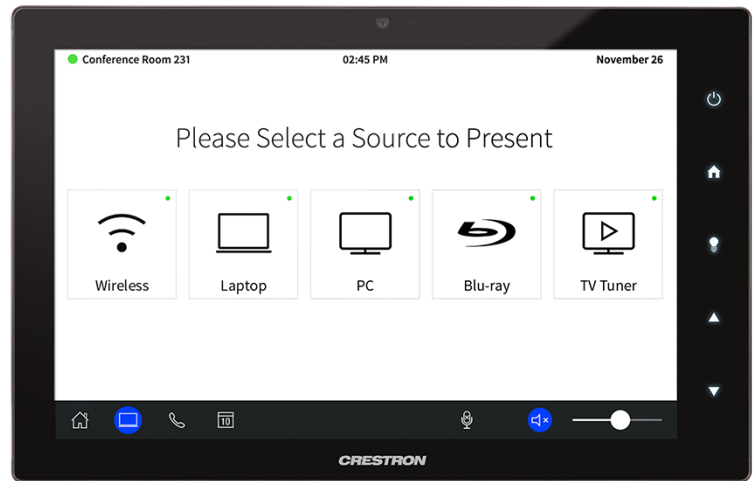
## 10.1" Touch Screen

- > Ultra clean, modern appearance
- > Thin profile and small footprint
- > Affordable and easy to install
- > 10.1" widescreen active-matrix color display
- > 1280 x 800 WVGA display resolution
- > Capacitive touch screen technology
- > Multi-touch capable
- > Smart Graphics™ performance [3]
- > Voice recognition capability [1,2]
- > H.264 or MJPEG streaming video
- > Rava® SIP intercom and phone technology [1]
- > Customizable audio feedback
- > Built-in web browsing [2]
- > On-screen multi-language keyboard
- > Customizable screensaver
- > Built-in microphone and camera [1]
- > 5 soft-touch capacitive buttons with automatically adjusting backlight brightness that disappear completely when backlight is turned off
- > Single-wire Ethernet connectivity
- > PoE network powered
- > SONOS® App integration
- > Built-in speakers
- > Supports US or European electrical wall box mounting
- > Can be mounted directly to drywall or paneling over a cutout
- > Compatible with TSW-UMB-60 Universal Mounting Bracket and TSW-UMB-60-PMK Pre-Construction Mounting Kit [4]
- > Pre-construction and masonry mounting options available [4]
- > Available tabletop and swivel mount options [4]
- > Available in smooth black or white finish [1]

### Advanced Touch Screen Control

A Crestron® touch screen offers an ideal user-interface for controlling all the technology in your home, boardroom, classroom, courtroom, or command center. Touch screens do away with piles of remote controls, cluttered wall switches, and cryptic computer screens, simplifying and enhancing the way you use technology. For controlling audio, video, lighting, shades, HVAC, security, and other systems, Crestron touch screens are fully-customizable with easy-to-use controls and icons, true feedback and real-time status display, live streaming video, voice recognition, web browsing, and advanced navigation of digital media servers, tuners, and other devices. [1]

With its clean, contemporary design highlighted by edge-to-edge glass and stunning color graphics, the Crestron TSW-1060 touch screen makes an elegant statement on any wall, tabletop, or lectern. Perfectly at home in the most contemporary residence or modern office building, its high-tech good looks underline its power for simplifying everyday tasks and functions throughout any facility.



The TSW-1060 delivers the ultimate touch screen experience in an unobtrusive, space-saving design featuring a brilliant 10.1 inch capacitive touch screen display with Smart Graphics™ and 5 soft-touch buttons. PoE connectivity and a range of mounting options make installation a breeze for both new and retrofit applications. Additional advanced features include the abilities to control any function using voice commands, view security cameras and other video sources, communicate using built-in intercom and phone capabilities, and browse the Internet. [2]

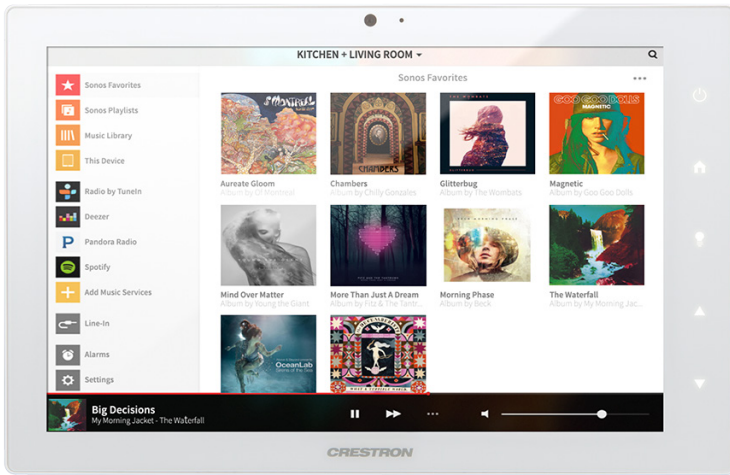
### Smart Graphics™ [3]

Crestron touch screens use Smart Graphics to deliver the ultimate user experience and the ultimate value by enabling the creation of dynamically rich user interfaces with incredible efficiency and unparalleled functionality. Using Smart Graphics, programmers can swiftly integrate fluid gesture-driven controls, animated feedback, rich metadata, embedded apps and widgets, and full-motion video for a deeply engaging and ultra-intuitive touch screen experience

Crestron Smart Graphics offers these enhancements and more:

- Cool-looking graphical buttons, sliders, knobs, and gauges that are intuitive and fun to use
- Kinetic effects to enhance the feeling of realism, with lists and toolbars that scroll with momentum at the flick of a fingertip
- Drag-and-drop objects that snap into place, offering an easy way to switch sources
- Dashboard widgets to personalize the touch screen with clocks, weather, news, and other information [2]
- A power-saving screensaver that allows display of time, temperature, and other text content at a reduced brightness level
- Customizable themes allowing a completely different look and feel for every user, event, or season
- Fully-developed SmartObjects® that enable sophisticated control over complex devices with minimal programming
- A consistent look and feel across multiple touch screens of varying sizes

# TSW-1060 10.1" Touch Screen



TSW-1060-W-S – Shown in White

## Soft-Touch Buttons

The TSW-1060 includes five backlit, soft-touch capacitive buttons for quick access to commonly used functions. The buttons are pre-labeled with icons for “Power”, “Home”, “Lights”, “Up”, and “Down” functions. Each button is programmable via the control system for custom functionality. The buttons’ backlights automatically adjust to the optimal brightness according to the ambient light in the room. The backlight brightness is also customizable through programming. When the backlight is turned off, the buttons disappear completely. Since the buttons’ backlighting is controlled on a per-button basis, the five buttons can be hidden or shown in any combination.

## Built-in Camera <sup>[1]</sup>

The built-in camera and microphone provide a versatile and secure intercom, videoconferencing system, and security camera. Communicate with loved ones throughout a large home by using the touch screens as a video intercom, or simply use one touch screen to check out the view from another or to see what is going on in various rooms around the house. Quick or unexpected videoconferencing calls are a snap with the TSW-1060. For security purposes, streaming video from the TSW-1060 camera can be encoded as an H.264 IP stream and sent to other touch screens or monitoring software.

## Voice Recognition <sup>[1]</sup>

Some things are easier *said* than *done*, so why not just *say* what you want and let Crestron *do* it for you? With built-in voice recognition, the TSW-1060 provides the ability to use spoken commands to control virtually anything. Voice recognition can be used to quickly turn devices on or off, select and play a specific media title or playlist, change the channel, choose a lighting scene, lock the doors, arm the security system, or enter a password. Simply press the Voice Recognition button and say a command and Crestron does the rest.<sup>[2]</sup>



TSW-1060-B-S and TSW-1060-TTK TableTop Mounting Kit

## Streaming Video

High-performance streaming video capability makes it possible to view security cameras and other video sources right on the touch screen. Native support for H.264 and MJPEG formats allows the TSW-1060 to display live streaming video from an IP camera, a streaming encoder (Crestron [CEN-NVS200](#), [DM-TXRX-100-STR](#), or similar<sup>[4]</sup>), or a [DigitalMedia™](#) switcher. Video is delivered to the touch screen over Ethernet, eliminating the need for any extra video wiring.

## Rava® SIP Intercom <sup>[1]</sup>

[Rava SIP Intercom Technology](#) enables hands-free VoIP communication with other Rava-enabled touch screens and door stations. Rava works over Ethernet, supporting 2-way intercom, video intercom,<sup>[5]</sup> and paging without requiring any special wiring. VoIP phone capability is also possible through integration with an SIP-compatible IP phone system or SIP server, allowing hands-free telephone functionality complete with speed-dialing, caller ID, custom ringers, and other enhancements. Built-in echo cancellation affords full-duplex performance for clear, seamless voice communication using the TSW-1060’s integrated microphone and speakers.

## Web Browsing

Using its built-in web browser, the TSW-1060 provides quick access to online program guides and other web-based services at the touch of a button, allowing enhanced touch screen control of DVRs and other appliances without having to pick up a separate tablet or smartphone. If a device can be controlled or managed through a web browser, it can be integrated into the Crestron system through the TSW-1060. Of course, the web browser may also be used to simply browse the Internet, check traffic conditions, or look up a recipe.<sup>[2]</sup>

# TSW-1060 10.1" Touch Screen

## Native Sonos® App

Crestron is proud to feature a native Sonos app on the TSW-1060 touch screen. With the app, users can enjoy the full Sonos experience since it is integrated directly with the Crestron Control System®. The easily installed and configured app provides a wide variety of audio content that can be controlled and distributed through the audio system straight from the touch screen. The only app of its kind on the market, the Sonos app brings a versatile library and easy-to-use audio distribution controls to casual listeners and audiophiles alike.

## On-Screen Keyboard

Typing in passwords, URLs, and text searches is facilitated using the on-screen multi-language keyboard.

## Multi-Touch Support

The TSW-1060's capacitive touch screen affords enhanced capabilities for browsing web pages using multi-touch gestures.

## Audio Feedback

Customized audio files can be loaded to add another dimension to the touch screen graphics using personalized sounds, button feedback, and voice prompts.

## Single-Wire Connectivity

A simple Ethernet LAN connection is all that is required to wire the TSW-1060, containing all control, video, intercom, and power signals within a single wire.

## Power over Ethernet

Using PoE technology, the TSW-1060 gets its operating power right through the LAN wiring. PoE (Power over Ethernet) eliminates the need for a local power supply or any dedicated power wiring. A PoE Injector ([PWE-4803RU](#)<sup>[4]</sup>) simply connects in line with the LAN cable at a convenient location. Crestron PoE switches ([CEN-SW-POE-5](#) or [CEN-SWPOE-16](#)<sup>[4]</sup>) may also be used to provide a total networking solution with built-in PoE.

## Simple, Versatile Mounting

The TSW-1060 is easily installed over a 2-gang or 3-gang electrical box, or a 2-gang European electrical box. It can also be attached directly to drywall and other surfaces over the front of a 2-3/8" H x 3-3/8" W (60mm H x 86mm W) cutout. When installed, it protrudes just 1/2 inch from the mounting surface and latches into its mounting bracket, eliminating any visible screws for an ultra clean appearance.

Crestron also offers the [TSW-UMB-60](#) Universal Mounting Bracket,<sup>[4]</sup> which provides a post-construction wall mounting solution that can accommodate a variety of current and future Crestron devices including the TSW-1060. The TSW-UMB-60 makes it easy to change devices at any time without having to cut or patch the wall, or order any additional mounting hardware. For a pre-construction mounting solution, the TSW-UMB-60 can be used along with a [TSW-UMB-60-PMK](#) Pre-Construction Mounting Kit.<sup>[4]</sup> Masonry and concrete applications can be accommodated using the TSW-UMB-60 along with a [TSW-UMB-60-BBI](#) back box.<sup>[4]</sup>

## Secure Mounting

Every TSW-1060 includes an optional security latch for installations in which the physical security of the touch screen is important. When installed, the security latch ensures that a casual passerby cannot remove the TSW-1060 from its mounted position in the wall. The latch can only be disengaged through a special removal sequence, protecting the touch screen against theft while still allowing serviceability where required.

## Tabletop Option

Using the optional Tabletop Kit ([TSW-1060-TTK](#)<sup>[4]</sup>), the TSW-1060 becomes a stylish, freestanding touch screen that fits perfectly on a table, desk, or countertop. It can even be permanently attached to the surface using the optional Swivel Mount Kit ([TSW-560/760/1060-SMK](#)<sup>[4]</sup>).

## SPECIFICATIONS

### Touch Screen Display

---

**Display Type:** TFT Active matrix color LCD

**Size:** 10.1 inch (257 mm) diagonal

**Aspect Ratio:** 16:10 WVGA

**Resolution:** 1280 x 800 pixels

**Brightness:** 400 nits (cd/m<sup>2</sup>)

**Contrast:** 950:1

**Color Depth:** 24-bit, 16.7M colors

**Illumination:** Edgelit LED

**Viewing Angle:** ±80° horizontal, ±80° vertical

**Touch Screen:** Projected capacitive, 5-point multi-touch capable

### Buttons

---

**Hard Keys:** (5) Backlit projected capacitive pushbuttons, programmable, pre-labeled with icons for "Power", "Home", "Lights", "Up", and "Down"; Backlighting can be enabled and disabled on a per-button basis

**Reset:** (1) Miniature pushbutton on rear panel for hardware reset

### Graphics Engine

---

Crestron Smart Graphics,<sup>[3]</sup> multi-language web browser,<sup>[2]</sup> multi-language on-screen keyboard, screensaver, single scalable streaming video window

### Languages

---

**Smart Graphics:** Arabic, Chinese (Simplified), Chinese (Traditional), Czech, Danish, Dutch, English (UK), English (US), Finnish, French, German, Greek, Hebrew, Hungarian, Italian, Japanese, Korean, Norwegian, Polish, Portuguese, Portuguese (Brazilian), Romanian, Russian, Slovak, Spanish, Swedish, Thai

**On-Screen Keyboard:** Arabic, Chinese (Simplified), Croatian, Czech, Danish, Dutch, English (UK), English (US), Finnish, French (Canada), French (Switzerland), German, Hebrew, Hungarian, Italian, Japanese, Norwegian Bokmal, Polish, Portuguese, Russian, Serbian, Spanish, Swedish, Turkish

**Voice Recognition:** Afrikaans (South Africa); Chinese, Mandarin (China, Simplified); Chinese, Mandarin (Hong Kong, Simplified); Chinese, Mandarin (Taiwan, Traditional); Chinese, Yue (Hong Kong, Traditional); Czech (Czech

# TSW-1060 10.1" Touch Screen

Republic); Dutch (Netherlands); English (Australia); English (Canada); English (Generic); English (India); English (New Zealand); English (South Africa); English (UK); English (US); French (France); German (Germany); isiZulu (South Africa); Italian (Italy); Japanese (Japan); Korean (South Korea); Polish (Poland); Portuguese (Brazil); Russian (Russia); Spanish (Spain); Turkish (Turkey)

**Web Browser:** Arabic, Bulgarian, Catalan, Chinese, Croatian, Czech, Danish, Dutch, English, Filipino, Finnish, French, German, Greek, Hebrew, Hindi, Hungarian, Indonesian, Italian, Japanese, Korean, Latvian, Lithuanian, Norwegian Bokmal, Pashto, Persian, Polish, Portuguese, Romanian, Romansh, Russian, Serbian, Slovak, Slovenian, Spanish, Swedish, Thai, Turkish, Ukrainian, Vietnamese

## Memory

**DDR3L RAM:** 2 GB

**Storage:** Firmware/Application: 4 GB Class 10 microSD card;<sup>[4]</sup>  
System: 4 GB eMMC

**Maximum Project Size:** 600 MB

## Communications

**Ethernet:** 10/100 Mbps, auto-switching, auto-negotiating, auto-discovery, full/half duplex, TCP/IP, UDP/IP, CIP, DHCP, SSL, TLS, SSH, SFTP (SSH File Transfer Protocol), IEEE 802.1X, SNMP, IPv4 or IPv6, IEEE 802.3af and 802.3at Type 1 compliant

## Streaming Decoder

**Video Formats:** H.264 (MPEG-4 part 10 AVC), MJPEG;  
Decodes and displays a maximum of (1) discrete video streaming sources

**Audio Formats:** AAC stereo

**Bitrates:** Up to 25 Mbps (20 Mbps maximum recommended)

**Streaming Input Resolutions:** Up to 1920x1080@30fps  
(1920x1080@30fps maximum recommended)

## Audio

**Features:** Built-in microphone and speakers, Rava SIP Intercom, multi-language voice recognition <sup>[1,2]</sup>

**Audio Feedback Formats:** MP3

## Camera <sup>[1]</sup>

**Image Size:** 5.0 MP

**Field of View:** 50° horizontal

## Connectors

**LAN PoE:** (1) 8-pin RJ45 with 2 LED indicators;  
10Base-T/100Base-TX Ethernet port, Power over Ethernet compliant;  
Green and yellow LEDs indicate Ethernet port status

**USB:** (1) USB 2.0 Type A (for future use)

## Power Requirements

**Power over Ethernet:** IEEE 802.3at Type 1 (802.3af compatible) Class 3 (12.95 W) PoE Powered Device

## Environmental

**Temperature:** 32° to 112° F (0° to 45° C)

**Humidity:** 10% to 90% RH (non-condensing)

**Heat Dissipation:** 44 BTU/hr

## Enclosure

**Construction:** Plastic, smooth black or white finish, edge-to-edge glass with black or white surround<sup>[1]</sup>

**Mounting:** Surface mount over a 2 or 3-gang electrical box, 2-gang European (DIN 49073) electrical box, 2-gang UK electrical box (minimum 35 mm mounting depth), or 2-3/8" H x 3-3/8" W (60mm H x 86mm W) cutout; Additional wall mount and tabletop options available separately

## Dimensions

**Height:** 6.59 in (168 mm)

**Width:** 10.23 in (260 mm)

**Depth:** 1.53 in (39 mm)

## Weight

23.9 oz (675 g)

## MODELS & ACCESSORIES

### Available Models

**TSW-1060-B-S:** 10.1" Touch Screen, Black Smooth

**TSW-1060-W-S:** 10.1" Touch Screen, White Smooth

**TSW-1060-NC-B-S:** 10.1" Touch Screen, w/out Camera/Microphone, Black Smooth

### Available Accessories

**TSW-1060-TTK:** Tabletop Kit for TSW-1060

**TSW-560/760/1060-SMK:** Swivel Mount Kit for TSW-560-TTK, TSW-760-TTK & TSW-1060-TTK

**TSW-UMB-60:** Universal Mounting Bracket for TSW-560/760/1060

**TSW-UMB-60-PMK:** Pre-Construction Mounting Kit for TSW-UMB-60

**TSW-UMB-60-BBI:** Wall Mount Back Box for TSW-560/760/1060 - International Version

**PWE-4803RU:** PoE Injector

**CEN-SW-POE-5:** 5-Port PoE Switch

**CEN-SWPOE-16:** 16-Port Managed PoE Switch

**CEN-NVS200:** Network Video Streamer

**DM-TXRX-100-STR:** HD Streaming Transmitter/Receiver

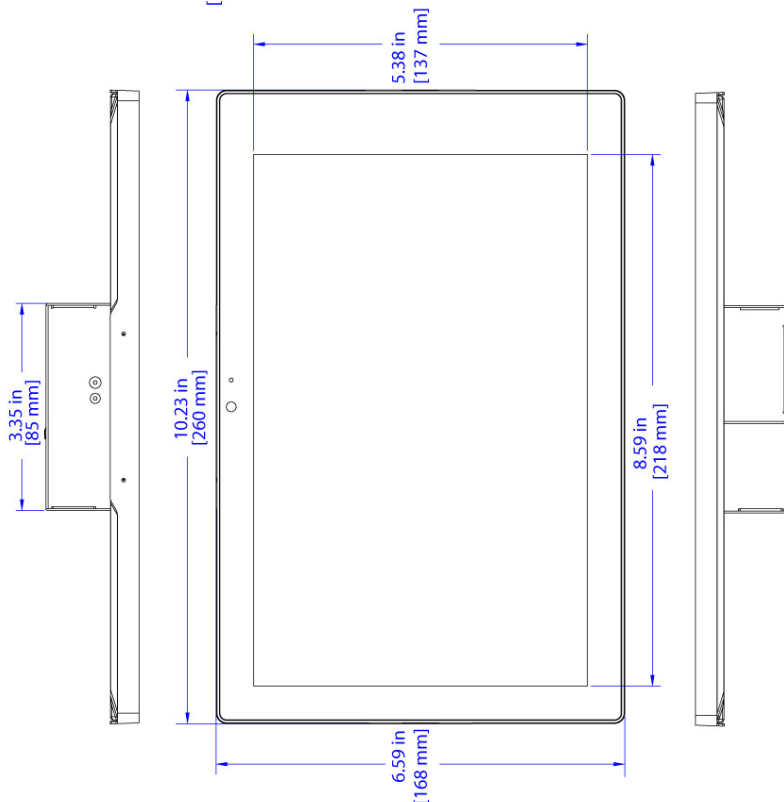
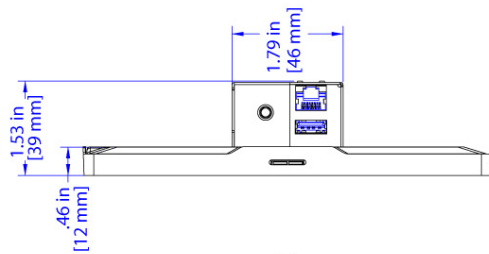
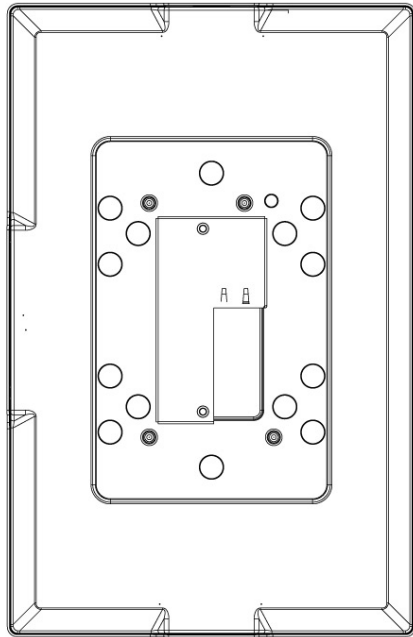
Notes:

1. Camera and microphone functions are available on TSW-1060-B-S and TSW-1060-W-S models only. A white finish is available on the TSW-1060-W-S model only.
2. Voice recognition, web browsing, weather information, and certain other functions require an Internet connection.
3. Supports Smart Graphics only. Not compatible with "traditional" UI projects.
4. Item(s) sold separately.
5. H.264 compatible IP camera required.



# TSW-1060 10.1" Touch Screen

## CAD DRAWINGS



This product may be purchased from an authorized Crestron dealer. To find a dealer, please contact the Crestron sales representative for your area. A list of sales representatives is available online at [www.crestron.com/salesreps](http://www.crestron.com/salesreps) or by calling 800-237-2041.

The specific patents that cover Crestron products are listed online at: [patents.crestron.com](http://patents.crestron.com).

Certain Crestron products contain open source software. For specific information, please visit [www.crestron.com/opensource](http://www.crestron.com/opensource).

Crestron, the Crestron logo, DigitalMedia, Rava, Smart Graphics, and SmartObjects are either trademarks or registered trademarks of Crestron Electronics, Inc. in the United States and/or other countries. Sonos is either a trademark or a registered trademark of Sonos, Inc. in the United States and/or other countries. Other trademarks, registered trademarks, and trade names may be used in this document to refer to either the entities claiming the marks and names or their products. Crestron disclaims any proprietary interest in the marks and names of others. Crestron is not responsible for errors in typography or photography. Specifications are subject to change without notice. ©2016 Crestron Electronics, Inc.