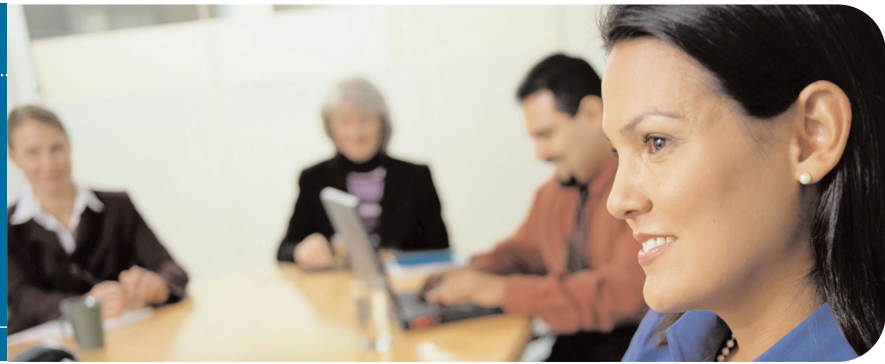


Ceiling DocCam™ II

Professional Cameras



The new **ClearOne Ceiling DocCam™ II** is a complete ceiling-mounted document camera system that displays images on monitors, plasma screens, video projectors and videoconferencing systems.

SHARE DOCUMENTS WITH CEILING DOCCAM II

The Ceiling DocCam II, from ClearOne the leader in professional audio conferencing, is the perfect solution for adding document and image sharing capabilities to your presentations, videoconferences and other meetings.

This camera is installed in the ceiling above a conference table and includes a laser positioning guide, making it easy to properly place documents for display. Superior, 480 TV line image resolution ensures that documents are clearly presented for easy viewing.

With its wide field of view, the Ceiling DocCam II is ideal for sharing large documents like blueprints or CAD drawings. And its powerful zoom capability — up to 300X — ensures every detail is clearly shown.

Power, video and control are run through a single Cat. 5 cable, which significantly simplifies installation. The Ceiling DocCam II outputs both composite and S-video signals concurrently for dual-monitor display in large rooms. It also features an RS-232 port with VISCA™ control protocol for easy connection to a control system such as AMX or Crestron and for use with video codecs with far-end camera control.

Using the IR remote control, you can program the Ceiling DocCam with six preset zoom settings to allow users to quickly adjust the camera for different types of documents. The Ceiling DocCam II can also be configured to allow the zoom function to be controlled through the video codec remote control.

KEY BENEFITS

Easy to Install

The Ceiling DocCam II uses a single Cat. 5 cable for video, control and power signals which significantly simplifies installation.

Superior Image Quality

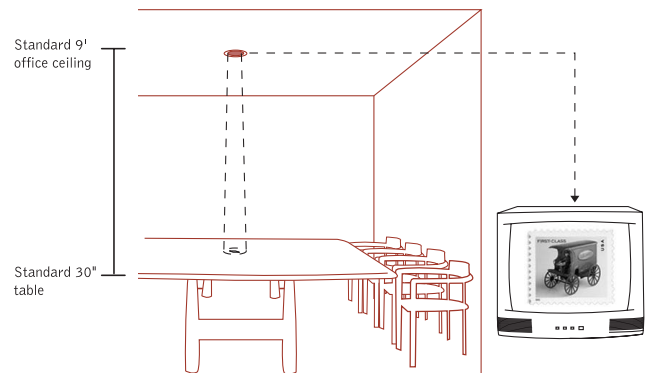
The high-quality CCD image sensor delivers 480 TV lines of full-motion video resolution with superb image clarity and color handling for easy viewing and more effective meetings.

Easy to Use

The Ceiling DocCam II features six camera presets to allow users to quickly adjust for different document types and a positioning laser to guide users when placing documents or images.

Complete Ceiling Installation Kit

The Ceiling DocCam II includes a plenum-rated enclosure, trim ring, single tile support rail and hardware, a 50'/15.24 m unshielded plenum-rated Cat. 5 cable, a 25'/7.6 m S-video cable, a wall plate and power supply.

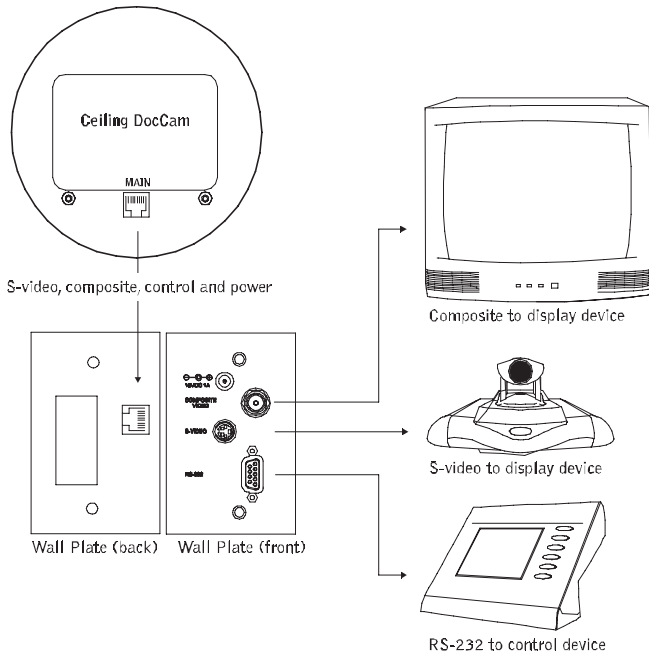


The Ceiling DocCam II can zoom in on an area roughly the size of a postage stamp.

ClearOne
You're Virtually ThereSM

PRODUCT BRIEF

INSTALLATION DIAGRAM



PRODUCT FEATURES

- ▶ **Laser positioning guide** to ensure accurate document placement
- ▶ **Single Cat. 5 cable** carries video, RS-232 control and power to greatly simplify installation
- ▶ **IR remote** with increased functionality, including brightness control, presets and laser operation
- ▶ **VISCA/RS-232 control** of automatic iris, white balance, gain control, shutter and image stabilization to counter vibration in the ceiling
- ▶ **Powerful zoom** with 25x optical and 12x digital (300x total zoom) for sharp focus and zoom detail
- ▶ **Pre-mounted** in a plenum-rated, low-profile enclosure
- ▶ **User accessible DIP switches** from the front of the camera allow the Ceiling DocCam II's zoom functions to be controlled by different video codec remotes

PRODUCT SPECIFICATIONS

Dimensions (Height x Diameter)

Enclosure: 4.5" x 6.5" (11.43 x 16.51 cm)
 Ceiling cutout: 3.5" (8.9 cm) diameter
 Trim ring: 5.5" (14 cm) diameter white

Weight

4 lb (1.81 kg)

Power

Power Supply: 15 VDC, 100-240 VAC, 50/60 HZ
 Consumption: 1.0 mA

Operating Temperature

32° F to 122° F (0° C to 50° C)

Video Format

NTSC or PAL

Image Sensor

1/6 Type Super HAD CCD

Pixels

Effective: Approx. 688,000

Horizontal Resolution

480+ TV lines

Sensitivity

2.5 Lux

SNR (Min)

49 dB

Focal Range

Infinity to 800mm (Telescopic)-35mm (Wide)

Lens (Horizontal Angle)

45 degrees (wide end) to
 2.0 degrees (telescopic end)

Zoom

Optical 25X zoom, f=2.4 mm (wide) to 60 mm
 (telescopic), F1.6 to F2.7
 Digital 12X (300X total with optical zoom)

Camera Features

White balance: Auto
 Brightness: Auto/Manual
 Backlight compensation: Auto
 Iris: Auto, Shutter: Auto exposure
 Focus: Auto/Manual
 6 Presets
 Laser (momentary-on for document positioning)
 Image Freeze, Image Flip
 Black and White (color off)
 Pos/Neg - Negative Art

Video Output

S-video and composite video (concurrent)

Control

VISCA/RS-232
 22-button ClearOne IR remote
 User Accessible Dip Switches to allow control of
 zoom functions from the following products:
 Polycom ViewStation
 Polycom ViewStation FX

Polycom ViewStation VS-4000
 Polycom iPower 9000, 900, 600
 Polycom VSX-7000
 Tandberg 2500
 Tandberg 6000
 Sony PCS-1
 Sony PCS-1600
 Sony PCS-6000
 Sony EVI-D100, EVI-D70
 Aethra Codecs
 ClearOne V-There

Control Interface

VISCA (TTL Signal Level; Baud rate: 9.6 Kbps,
 19.2 Kbps; Stop Bit: 1/2 Selectable)

Wall Plate

S-video, composite video, power, RS-232

Enclosure

Plenum-rated

Cables

50' (15.24 m) plenum Cat. 5 cable with RJ-45
 connectors (can use custom 10' - 200' cable)
 25' (7.62 m) S-video cable

Models

910-171-066
 910-171-066-PAL