

SECTION 7

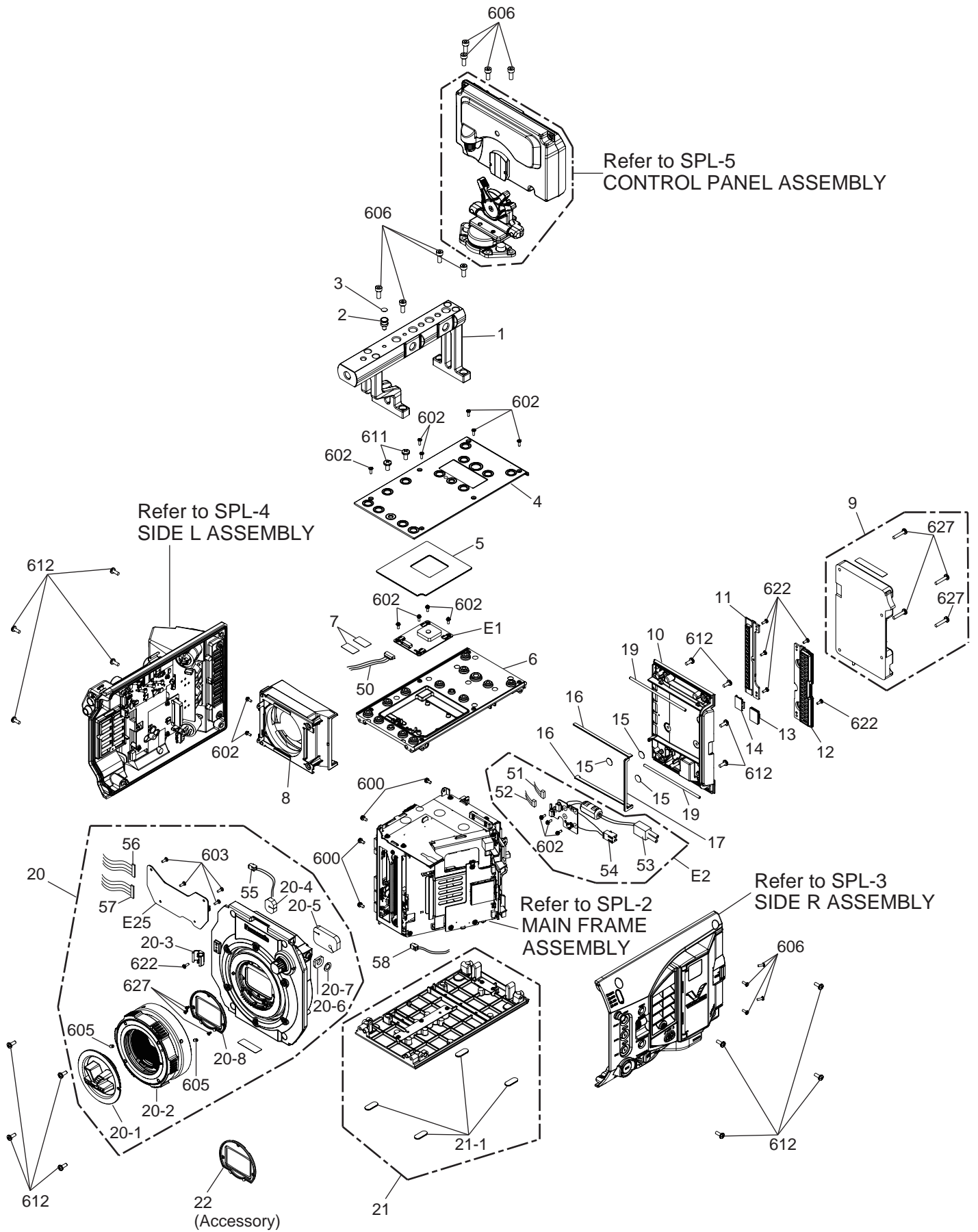
EXPLODED VIEWS & REPLACEMENT PARTS LIST

Model No. : **AU-V35LT1G/MC**

Note:

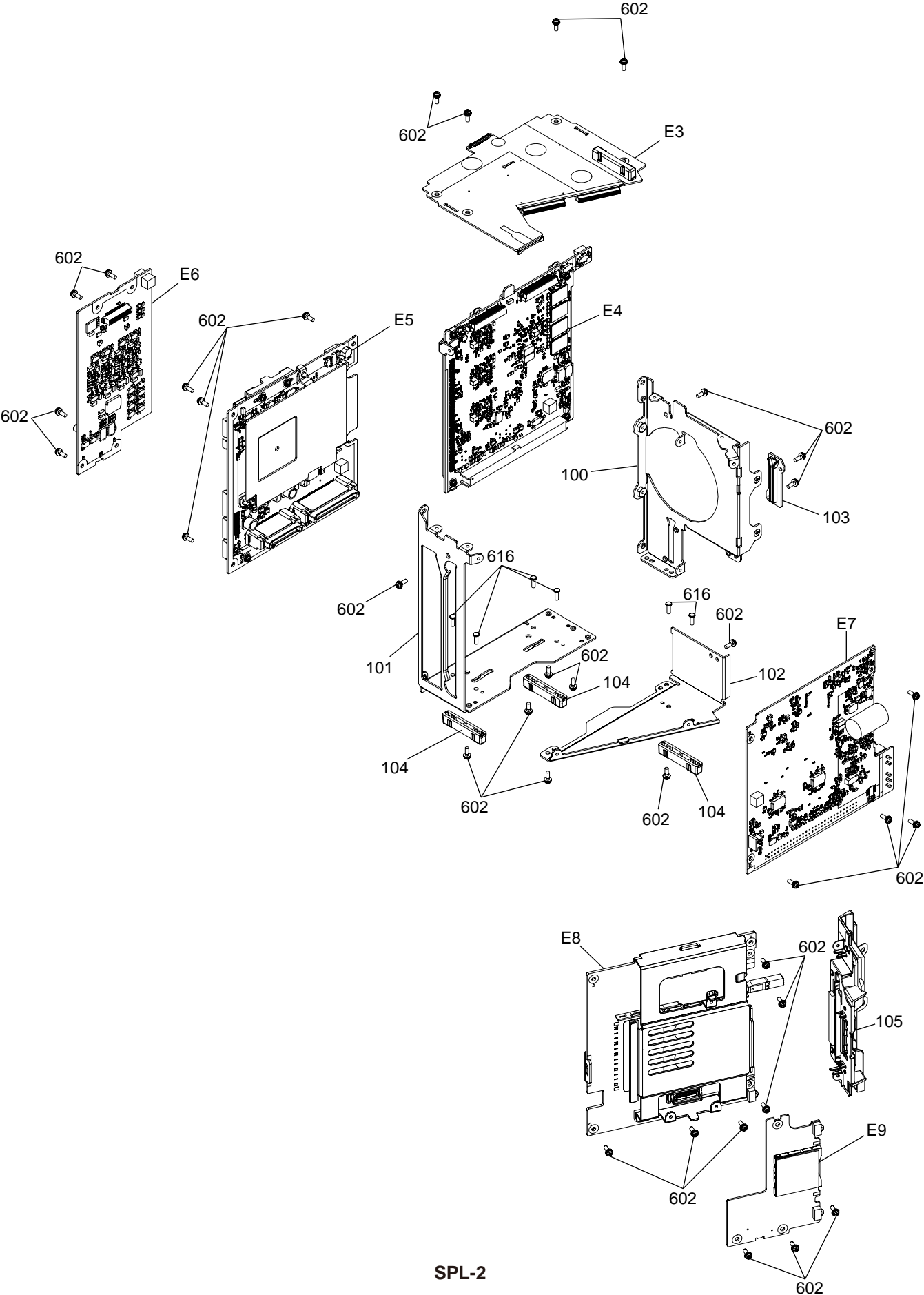
1. *Be sure to make your orders of replacement parts according to this list.
2. Unless otherwise specified, all resistors are in OHMS, K=1,000 OHMS, all capacitors are in MICROFARADS (μ F) P= μ μ F.
3. The P.C.Board unit marked with "■" shown below the main assembled parts.
4. The parts marked with $\text{\textcircled{E}}$ on the exploded view show the electric parts.
5. IMPORTANT SAFETY NOTICE
Components identified with the mark \triangle have the special characteristics for safety When replacing any of these components, use only the same type.
6. The marking (RTL) indicates the retention time is limited for this item.
After the discontinuation of this assembly in production, it will no longer be available.
7. "M" in Remark column indicates needed in the periodical maintenance.

MAIN FRAME ASSEMBLY

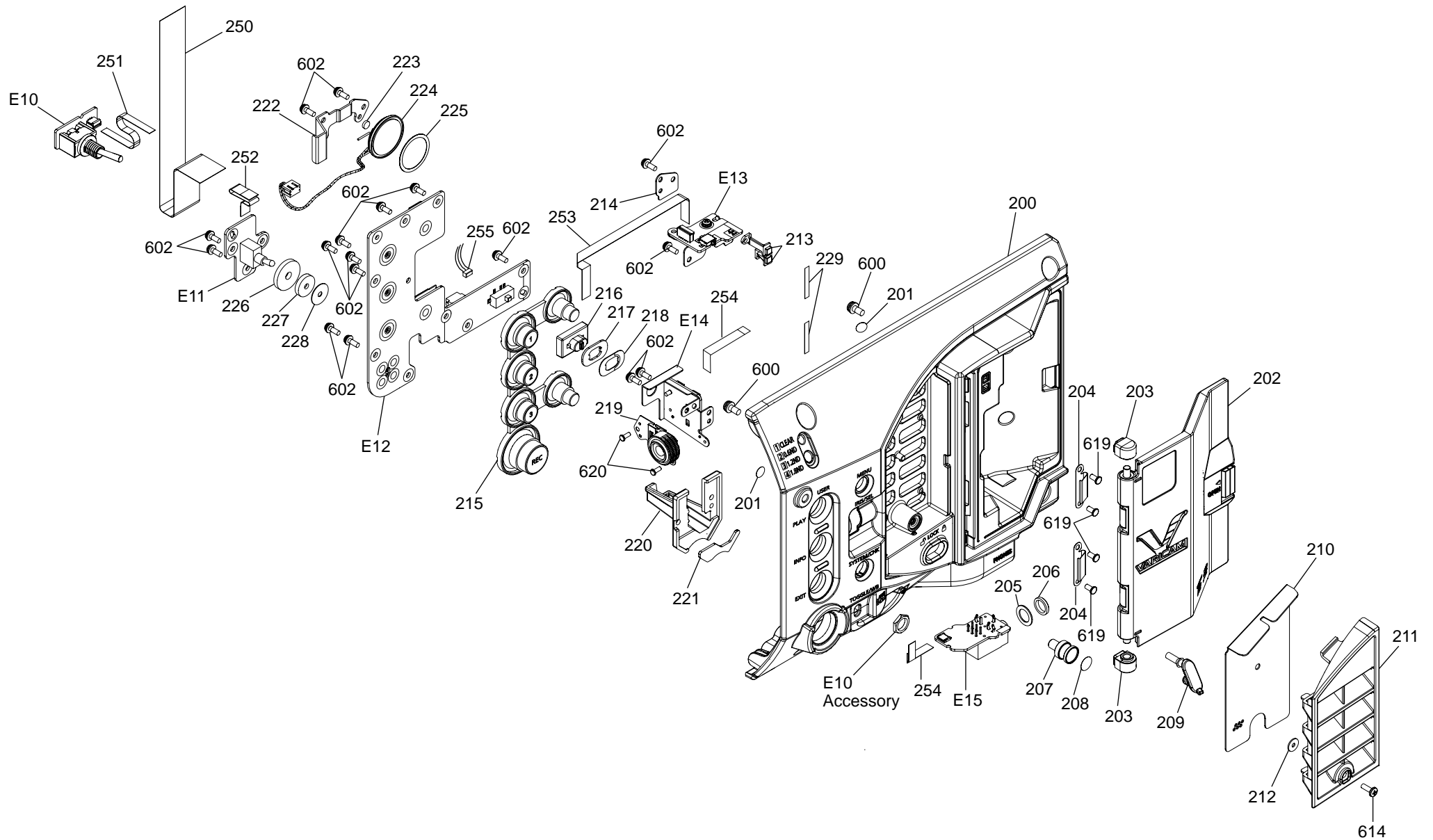


SPL-1

P.C.BOARD ASSEMBLY

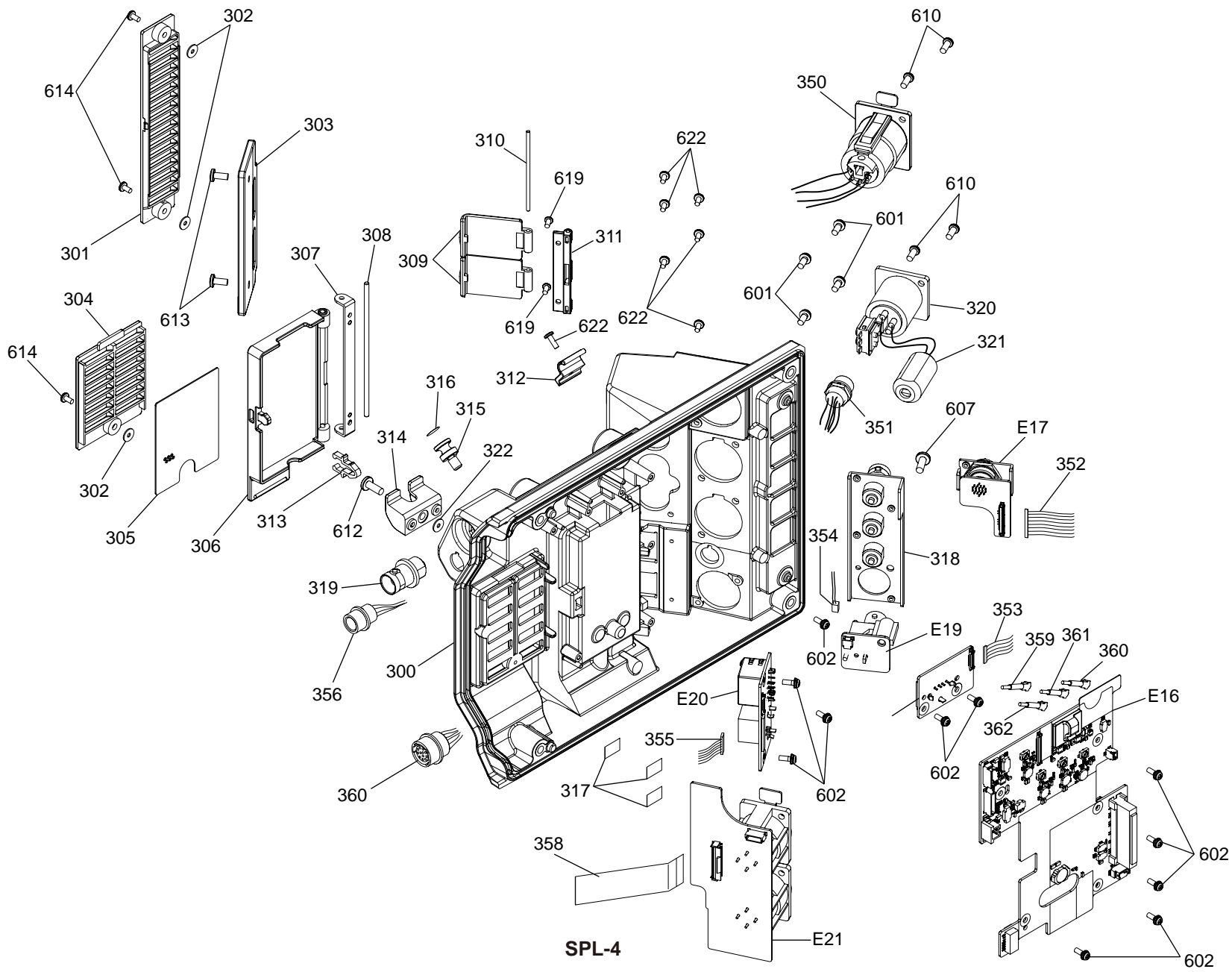


SIDE R ASSEMBLY

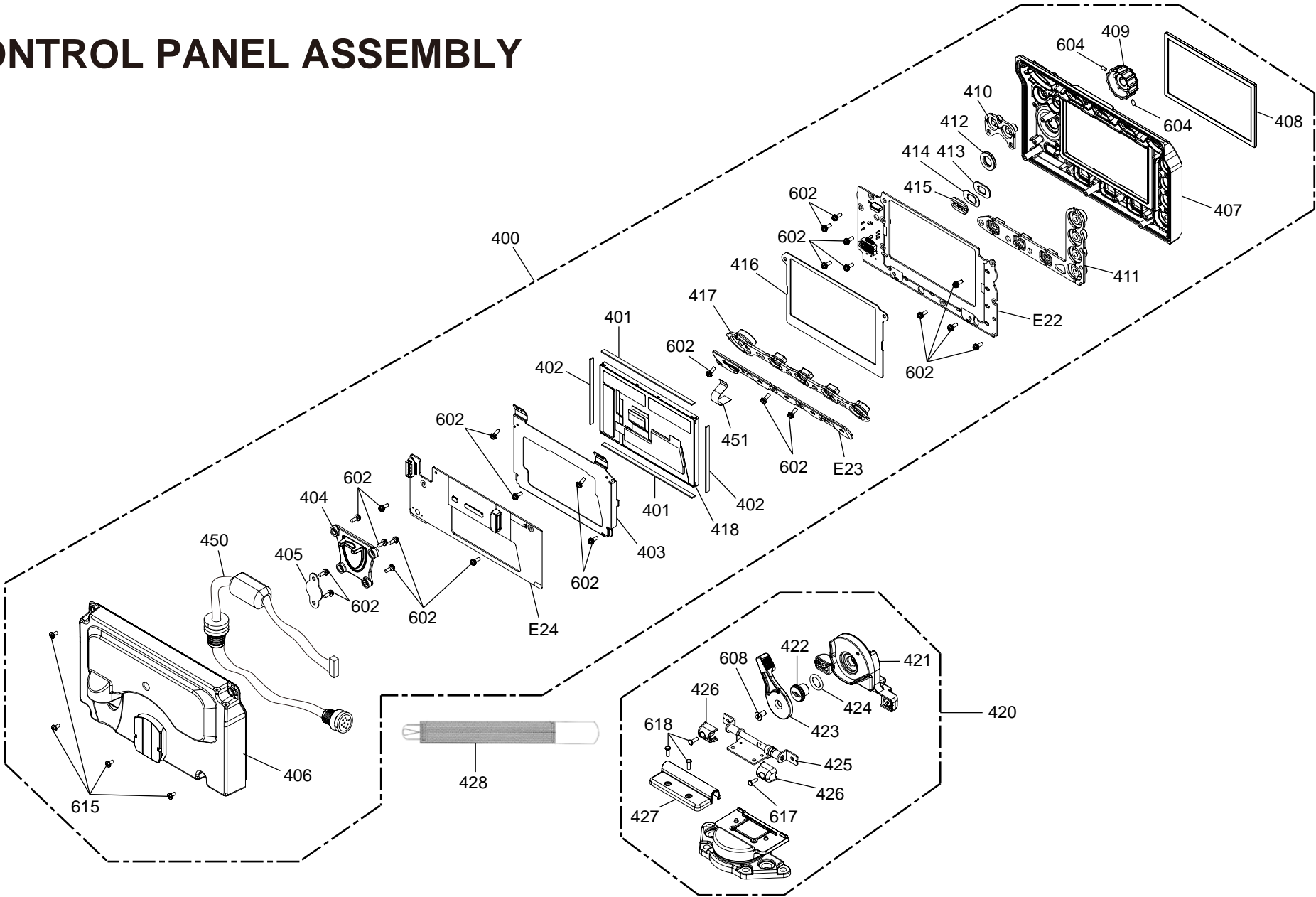


SPL-3

SIDE L ASSEMBLY



CONTROL PANEL ASSEMBLY



P.C.BOARD ASSEMBLY LIST

| Ref. No. | Part No. | Part Name & Description | Pcs | Remark |
|----------|-------------|-------------------------|-----|--------|
| 100 | VMPOL84 | BACK FRAME | 1 | |
| 101 | VMPOL83 | MAIN FRAME | 1 | |
| 102 | VMPOL86 | BOTTOM SUB FRAME | 1 | |
| 103 | VGQ1V35 | PB GUIDE RAIL | 1 | |
| 104 | VGQ1V18 | GUIDE RAIL | 3 | |
| 105 | VYK6V66 | CARD GUIDE UNIT | 1 | |
| | | | | |
| | | | | |
| | | | | |
| | | | | |
| E3 | VEP002V6A | TOP P. C. BOARD | 1 | |
| E4 | VEP03K20A-S | MAIN P. C. BOARD | 1 | |
| E5 | VEP03K22A | CAM P. C. BOARD | 1 | |
| E6 | VEP04A06A | AUDIO P. C. BOARD | 1 | |
| E7 | VEP01A99A | POWER P. C. BOARD | 1 | |
| E8 | VEP03K21A | CARD U P. C. BOARD | 1 | |
| E9 | VEP002V7A | SD CARD P. C. BOARD | 1 | |
| | | | | |
| | | | | |
| | | | | |
| | | | | |
| | | | | |
| | | | | |
| | | | | |
| | | | | |
| | | | | |
| | | | | |
| | | | | |
| | | | | |
| | | | | |
| | | | | |
| | | | | |
| | | | | |
| | | | | |
| | | | | |
| | | | | |
| | | | | |
| | | | | |
| | | | | |
| | | | | |
| | | | | |
| | | | | |
| | | | | |
| | | | | |
| | | | | |
| | | | | |
| | | | | |
| | | | | |
| | | | | |
| | | | | |
| | | | | |
| | | | | |
| | | | | |
| | | | | |
| | | | | |
| | | | | |
| | | | | |
| | | | | |

SIDE R ASSEMBLY LIST

| Ref. No. | Part No. | Part Name & Description | Pcs | Remark |
|----------|--------------|-------------------------|-----|--------|
| 200 | VGM2600 | SIDE CASE R | 1 | |
| 201 | VGf1079 | SEAL | 2 | |
| 202 | VYF3599 | CARD DOOR UNIT | 1 | |
| 203 | VDB1786 | P2 DOOR PEDESTAL | 2 | |
| 204 | VMC2272 | DOOR SPRING | 2 | |
| 205 | VMX0531 | SPACER | 1 | |
| 206 | VHNO382 | M6 NUT | 1 | |
| 207 | VHD2551 | MEASURE HOOK | 1 | |
| 208 | VQL3B33 | MEASURE HOOK LABEL | 1 | |
| 209 | VMG2197 | FB CAP | 1 | |
| 210 | VKF5326 | MESH PLATE | 1 | |
| 211 | VKF5325 | AIR INTAKE COVER | 1 | |
| 212 | VMX3286 | M2 SPACER | 1 | |
| 213 | VGL1356 | SD CARD PANEL LIGHT R | 2 | |
| 214 | VMPOL95 | PANELLIGHT HOLD BRACKET | 1 | |
| 215 | VGUOS34 | RUBBER BUTTON | 1 | |
| 216 | VGUOR73 | SLIDE SW COVER | 1 | |
| 217 | VMT2405 | SLIDE SW PAD | 1 | |
| 218 | VGH5409 | SLIDE SW SHEET | 1 | |
| 219 | KORE00300036 | JOG DIAL UNIT | 1 | |
| 220 | VGQ1V21 | JOG DIAL SUPPORT | 1 | |
| 221 | VMT2516 | JOG DIAL CUSHION | 1 | |
| 222 | VMPOL97 | SPEAKER BRACKET | 1 | |
| 223 | VMG1286 | CUSHION | 1 | |
| 224 | LOAA02A00127 | SPEAKER | 1 | |
| 225 | VMZ3712 | SPEAKER NET | 1 | |
| 226 | VMT2531 | TOGGLE EARTH CUSHION | 1 | |
| 227 | VMT1432 | WATERPROOF SPONGE | 1 | |
| 228 | VMG2170 | TOGGLE SW RUBBER | 1 | |
| 229 | VMT2181 | GASKET | 2 | |
| | | | | |
| | | | | |
| | | | | |
| | | | | |
| 250 | VWJ30J6150L0 | R SIDE FFC | 1 | |
| 251 | VWJ06J6040L0 | POWER SW FFC | 1 | |
| 252 | VWJ06J6030L0 | TOGLE FFC | 1 | |
| 253 | VWJ12J6100L0 | CARD SW FFC | 1 | |
| 254 | VWJ06J6050L0 | DIAL FFC/PHONE FFC | 2 | |
| 255 | VEE1S56 | CABLE | 1 | |
| | | | | |
| | | | | |
| | | | | |
| | | | | |
| | | | | |
| E10 | VEP002W0A | POWER_SW P. C. BOARD | 1 | |
| E11 | VEP002V9A | TOGGLE P. C. BOARD | 1 | |
| E12 | VEP002V8A | RSIDE P. C. BOARD | 1 | |
| E13 | VEP002W3A | CARD SW P. C. BOARD | 1 | |
| E14 | VEP002W2A | DIAL P. C. BOARD | 1 | |
| E15 | VEP002W1A | PHONE P. C. BOARD | 1 | |
| | | | | |
| | | | | |
| | | | | |
| | | | | |
| | | | | |
| | | | | |
| | | | | |
| | | | | |
| | | | | |
| | | | | |
| | | | | |
| | | | | |

SIDE L ASSEMBLY LIST

| Ref. No. | Part No. | Part Name & Description | Pcs | Remark |
|----------|--------------|--------------------------|-----|--------|
| 300 | VGM2598 | SIDE CASE L | 1 | |
| 301 | VKF5321 | SIDE L DUCT B | 1 | |
| 302 | VMX3286 | M2 SPACER | 3 | |
| 303 | VGM2599 | BNC GUARD | 1 | |
| 304 | VKF5319 | SIDE L DUCT F | 1 | |
| 305 | VKF5320 | SIDE L NET COVER F | 1 | |
| 306 | VKF5318 | DONGLE DOOR | 1 | |
| 307 | VMPOL91 | DONGLE DOOR PLATE | 1 | |
| 308 | VMS8496 | DONGLE DOOR SHAFT | 1 | |
| 309 | VKF5323 | USB CAP | 2 | |
| 310 | VMS8457 | CAP SHAFT | 1 | |
| 311 | VGQ1U38 | CONNECTOR CAP BASE | 1 | |
| 312 | VJF0804 | CABLE CLAMPER | 1 | |
| 313 | VGQ0550 | DOOR PIECE | 1 | |
| 314 | VGQ1G56 | DONGLE STOPPER | 1 | |
| 315 | VHD2551 | MEASURE HOOK | 1 | |
| 316 | VQL3B33 | MEASURE HOOK LABEL | 1 | |
| 317 | VMT2225 | GUSKET | 3 | |
| 318 | VYK6V70 | SDI PANEL UNIT | 1 | |
| 319 | K1SYYYA0002 | VF BNC CONNECTOR | 1 | |
| 320 | VEKOW09 | DCIN CONNECTOR UNIT | 1 | |
| 321 | JOKG00000001 | FERRITE CORE | 1 | |
| 322 | VMX3348 | NYLON WASHER | 1 | |
| | | | | |
| | | | | |
| | | | | |
| | | | | |
| 350 | VEE1S49 | 5P XLR CABLE | 1 | |
| 351 | VEE1S50 | REAR DC OUT CABLE | 1 | |
| 352 | VEE1S58 | LCD CN-L SIDE CABLE | 1 | |
| 353 | VEE1S81 | IT-USB HOST CABLE | 1 | |
| 354 | VEE1R25 | L SIDE-TC BNC CABLE | 1 | |
| 355 | VEE1S59 | IT-TOP CABLE | 1 | |
| 356 | VEE1S48 | FRONT DC OUT CABLE | 1 | |
| 357 | VEE1S47 | LENS/GRIP CABLE | 1 | |
| 358 | VWJ30J6200L0 | XLR FFC | 1 | |
| 359 | K1TYYYY00218 | VF SDI CABLE (BLUE) | 1 | |
| 360 | K1TYYYY00260 | GENLOCK IN CABLE (BLACK) | 1 | |
| 361 | K1TYYYY00259 | SDI OUT 2 CABLE (BLUE) | 1 | |
| 362 | K1TYYYY00219 | SDI OUT 1 CABLE (RED) | 1 | |
| | | | | |
| | | | | |
| | | | | |
| | | | | |
| E16 | VEP002X2A | L SIDE P. C. BOARD | 1 | |
| E17 | VEP002W7A | LCD CN P. C. BOARD | 1 | |
| E18 | VEP002W6A | TC CN P. C. BOARD | 1 | |
| E19 | VEP002W8A | USB HOST P. C. BOARD | 1 | |
| E20 | VEP002W4A | IT P. C. BOARD | 1 | |
| E21 | VEP002W5A | XLR P. C. BOARD | 1 | |
| | | | | |
| | | | | |
| | | | | |
| | | | | |
| | | | | |
| | | | | |
| | | | | |
| | | | | |
| | | | | |
| | | | | |
| | | | | |
| | | | | |
| | | | | |
| | | | | |
| | | | | |
| | | | | |
| | | | | |
| | | | | |
| | | | | |
| | | | | |
| | | | | |
| | | | | |
| | | | | |
| | | | | |
| | | | | |
| | | | | |
| | | | | |
| | | | | |
| | | | | |

CONTROL PANEL ASSEMBLY LIST

| Ref. No. | Part No. | Part Name & Description | Pcs | Remark |
|----------|--------------|-------------------------|-----|--------|
| 400 | VYK6V78 | CONTROL UNIT | 1 | |
| 401 | VMT2403 | LCD CUSHION A | 2 | |
| 402 | VMT2404 | LCD CUSHION B | 2 | |
| 403 | VMPOJ94 | LCD HOLD FRAME | 1 | |
| 404 | VKF5298 | CONNECTOR COVER | 1 | |
| 405 | VGFO964 | FRONT FOOT GUARD | 1 | |
| 406 | VGM2601 | LCD CASE BOTTOM | 1 | |
| 407 | VGM2442 | LCD CASE TOP | 1 | |
| 408 | VKW3566 | LCD WINDOW | 1 | |
| 409 | VGUOR81 | SEL SET DIAL | 1 | |
| 410 | VGUOR82 | OPE RUBBER BUTTON_3 | 1 | |
| 411 | VGUOR76 | OPE RUBBER BUTTON_2 | 1 | |
| 412 | VMG1317 | MENU WATERPROOF RUBBER | 1 | |
| 413 | VGH5409 | SLIDE SW SHEET | 1 | |
| 414 | VMT2405 | SLIDE_SW_PAD | 1 | |
| 415 | VGUOR83 | SLIDE SW_KNOB | 1 | |
| 416 | VMT2393 | LCD PAD | 1 | |
| 417 | VGUOR75 | OPE RUBBER BUTTON_1 | 1 | |
| 418 | L5EDDYY00621 | LCD MODULE | 1 | |
| 420 | VYK6V59 | ROTATION BASE UNIT | 1 | |
| 421 | VGM2643 | LCD HOLD BASE | 1 | |
| 422 | VGUOR85 | V_EDGE_LOCK LEVER | 1 | |
| 423 | VHD2552 | EVF LOCK SCREW | 1 | |
| 424 | VMG0956-A | O RING | 1 | |
| 425 | VXD0648 | EYE PIECE HINGE | 1 | |
| 426 | VKF5227 | HINGE_COVER | 2 | |
| 427 | VKF5113 | OUTER COVER | 1 | |
| 428 | VFC4490 | CABLE STRAP | 1 | |
| | | | | |
| | | | | |
| | | | | |
| | | | | |
| | | | | |
| 450 | VEE1S60 | LCD CABLE | 1 | |
| 451 | VWJ12J6033L0 | FLEXIBLE CABLE | 1 | |
| | | | | |
| | | | | |
| | | | | |
| E22 | VEP002W9A | OP SW1 P. C. BOARD | 1 | |
| E23 | VEP002X1A | OP SW2 P. C. BOARD | 1 | |
| E24 | VEP002X0A | OP MONITOR P. C. BOARD | 1 | |
| | | | | |
| | | | | |
| | | | | |
| | | | | |
| | | | | |
| | | | | |
| | | | | |
| | | | | |
| | | | | |
| | | | | |
| | | | | |
| | | | | |
| | | | | |
| | | | | |
| | | | | |
| | | | | |

SCREW LIST

| Ref. No. | Part No. | Part Name & Description | Pcs | Remark |
|----------|-------------|--------------------------|-----|--------|
| 600 | XYN26+J6FJ | SCREW | 6 | |
| 601 | XYN26+A6FJK | SCREW | 4 | |
| 602 | XYN2+J6FJ | SCREW | 106 | |
| 603 | XYN2+F5FJ | SCREW | 4 | |
| 604 | XXEV2W4FP | HEXAGON SOCKET SET SCREW | 2 | |
| 605 | XXE3B5FJK | SCREW | 2 | |
| 606 | XVE4B1OVK | HEX SOCKET HEAD CAP BOLT | 8 | |
| 607 | XTB3+8GFJK | SCREW | 1 | |
| 608 | XSS3+6FJK | SCREW | 1 | |
| 609 | XSS26+6FN | SCREW | 3 | |
| 610 | XSN26+6FN | SCREW | 4 | |
| 611 | XSB4+6FJK | SCREW | 2 | |
| 612 | XSB3+8FJK | SCREW | 17 | |
| 613 | XSB26+4FJK | SCREW | 2 | |
| 614 | XSB2+6FJK | SCREW | 11 | |
| 615 | XSB2+4FJK | SCREW | 15 | |
| 616 | XQN2+BJ6FJ | SCREW | 10 | |
| 617 | XQN2+BJ5FJK | SCREW | 7 | |
| 618 | XQN2+B6FJK | SCREW | 4 | |
| 619 | XQN2+B4FJK | SCREW | 10 | |
| 620 | XQN16+B4FN | SCREW | 1 | |
| 621 | VHD2588 | SCREW | 6 | |
| 622 | VHD2585 | SCREW | 6 | |
| 623 | VHD2552 | EVF LOCK SCREW | 1 | |
| 624 | VHD1950 | HEX SOCKET HEAD CAP BOLT | 6 | |
| 625 | VHD1793 | HEX SCREW | 4 | |
| 626 | XSB3+16FJK | SCREW | 4 | |
| 627 | XQN2+B3FJK | SCREW | 3 | |
| | | | | |
| | | | | |
| | | | | |
| | | | | |
| | | | | |
| | | | | |
| | | | | |
| | | | | |
| | | | | |
| | | | | |
| | | | | |
| | | | | |
| | | | | |
| | | | | |
| | | | | |
| | | | | |
| | | | | |
| | | | | |
| | | | | |
| | | | | |
| | | | | |
| | | | | |
| | | | | |
| | | | | |
| | | | | |
| | | | | |
| | | | | |

PACKING PARTS LIST

| Ref. No. | Part No. | Part Name & Description | Pcs | Remark |
|----------|----------|-------------------------|-----|-----------------|
| | VPG3W58 | PACKING CASE IN | 1 | For AU-V35LT1G |
| | VPG3W59 | PACKING CASE OUT | 1 | For AU-V35LT1G |
| | VPG3W60 | PACKING CASE IN | 1 | For AU-V35LT1MC |
| | VPG3W61 | PACKING CASE OUT | 1 | For AU-V35LT1MC |
| | VPN7876 | CUSHION TOP | 1 | |
| | VPN7877 | CUSHION BOTTOM | 1 | |
| | VXQ2588 | CLEAR FILTER WITH CASE | 1 | Accessory |
| | | | | |
| | | | | |
| | | | | |
| | | | | |
| | | | | |
| | | | | |
| | | | | |
| | | | | |
| | | | | |
| | | | | |
| | | | | |
| | | | | |
| | | | | |
| | | | | |
| | | | | |
| | | | | |
| | | | | |
| | | | | |
| | | | | |
| | | | | |
| | | | | |
| | | | | |

