

# Soundweb™ 9010 Programmable Remote

# SOUNDWEB™

The Soundweb 9010 Remote control is the long awaited solution to the problem of providing a sophisticated system control interface which requires no technical knowledge to operate.

The 9010 extends the already outstanding flexibility of the Soundweb system by providing multi-purpose programmable remote control. The 9010 has a rotary encoder and 6 push buttons which are labelled by a graphic LCD display.

The encoder and each button can be used to adjust almost any processing parameter within a Soundweb network; the user sets up the functions in the Soundweb Designer software. Multiple 'control pages' can be constructed with navigation between them and password protection, i.e. a button can have a different function in each page.



- **Backlit graphic liquid crystal display with programmable layout.**
- **One programmable continuous rotary encoder to adjust parameters.**
- **Six programmable pushbuttons.**
- **Internal electret capsule microphone with computer-controlled gain.**
- **External dynamic microphone input with computer-controlled gain.**
- **Two channel audio output.**

In addition to its control facilities, the 9010 provides an internal capsule microphone, an external microphone input, and two channels of audio output.

With suitable external amplification and loudspeakers, the audio outputs can be used for local monitoring of network audio signals or local communications.

The 9010 connects into the Soundweb network using RJ-45 connectors and category 5 cable, just like any other Soundweb device. The 9010 is powered from a standard 24V DC power supply; BSS provide a suitable supply capable of powering up to four 9010s. The optional 9011 adapter allows power to be sent to a daisy chain of 9010s down the network cable.

## Technical Specifications

**Mic Input:** 18 Bit A/D Conversion  
External Input Specifications  
Dynamic Range: 81dB  
(22Hz to 22kHz unweighted)  
Gain Control Range: 34dB to 72.5dB  
Max. Input Level: -14dBu  
EIN: -106dBu @ 150 Ohm

**Audio Output:** 18 Bit D/A Conversion  
Dynamic Range: >88dB  
(22Hz to 22kHz unweighted)  
Frequency Response: 30Hz to 20kHz, +/-0.5dB  
THD: <0.05%  
(20Hz-20kHz, 0dBu)  
Max. Output Level: +4dBu  
Channel Separation: 80dB, 20Hz-20kHz

**Power Requirements:** +24V DC, <5VA

BSS Audio offer a universal AC input +24V DC power supply (Z-999-PSU) and the interface adapter (Z-SW9011). The PSU may connect directly to a SW9010, or connect via the interface adapter where power will be supplied via the network.

### Software

Requires Soundweb Designer V1.14 or later.

The 9010 is fitted in a sturdy steel case, and is designed to mount in a standard US 3 gang outlet box.

BSS Audio have a policy of continued product improvement and accordingly reserve the right to change features and specifications without prior notice.



# Soundweb™ 9010 Programmable Remote

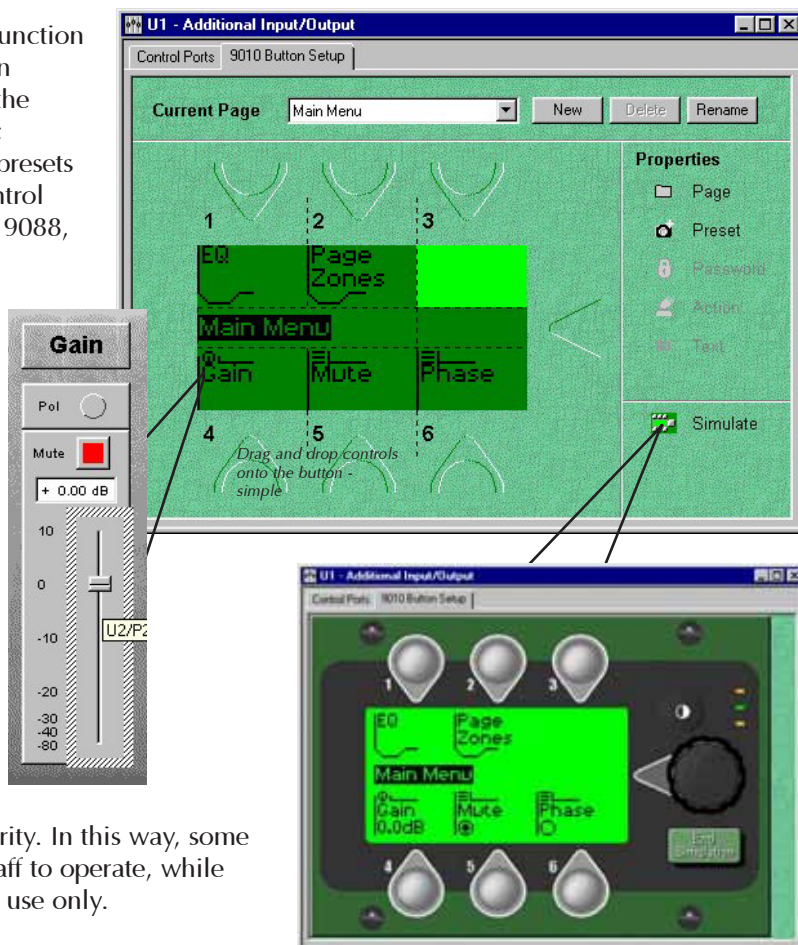
# SOUNDWEB™

## Programming the 9010

To program the 9010, the 'Button Setup' function within Soundweb Designer opens a design window which allows the user to decide the functions of each button and the encoder; whether it is to adjust parameters, trigger presets or change menu pages. The 9010 can control virtually any parameter of any Soundweb 9088, 9008 or 9000 device on the network.

For example, to assign a button to a fader to control gain, it is simply a matter of opening the gain control panel (in design mode) and dragging the fader object onto the desired button. The button adds default text, which may be changed with the text tool. When the button is pressed on the actual remote, the encoder will then control that fader.

Parameter controls, presets and parameter presets can all be placed onto buttons. Buttons can also be used to address new menu pages, by first creating a new page, then programming a button to access that page. These pages can be password protected for security. In this way, some functions can be left for general facility staff to operate, while other functions are secured for technician use only.

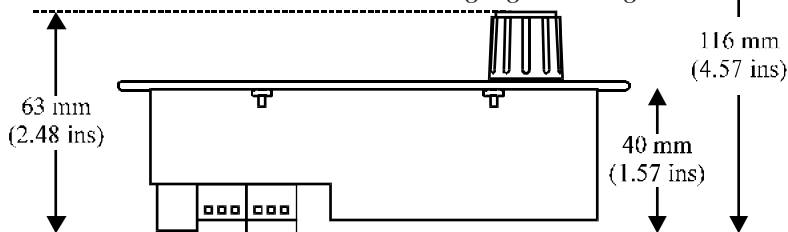


## Mechanical Installation

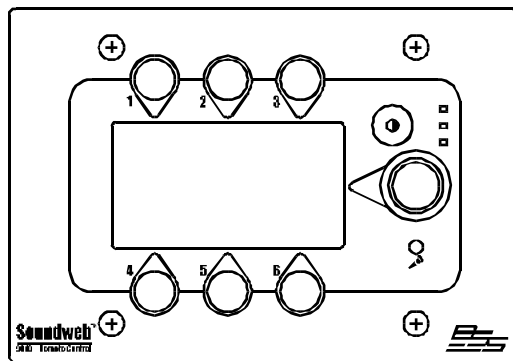
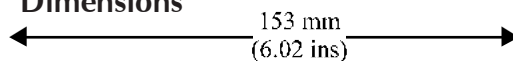
The 9010 Remote is designed to fit into a standard US 3-gang wallbox (available from BSS Audio) using the screws provided with the unit. We also offer a decorative bezel that fits around the 9010 when mounted in this box.

## Ordering Information

Z-SW9010	9010 Programmable Remote
Z-SW9011	Interface Power Adapter
Z-999-PSU	Universal 24V PSU
Z-010-BEZEL	Decorative bezel for 9010 Remote
Z-010-WALLBOX	Standard metal 3-gang mounting box



## Dimensions



Once the design is complete, using the SIMULATE function allows you to check and debug the set up to ensure all the functions operate as expected, prior to compiling and loading the program into the 9010 device.



**BSS Audio UK** A Division of Harman International Industries Ltd  
 Cranborne House, Cranborne Road, Potters Bar,  
 Hertfordshire, England, EN6 3JN  
 Tel +44 (0)1707 660667, Fax +44 (0)1707 660755  
 www.bss.co.uk/soundweb/  
 email: soundweb@bss.co.uk

**Harman Music Group**  
 8760 S. Sandy Parkway  
 Sandy, Utah 84070  
 Tel: 801-566-8800 Fax: 801-568-7662  
 web: www.bssaudious.com