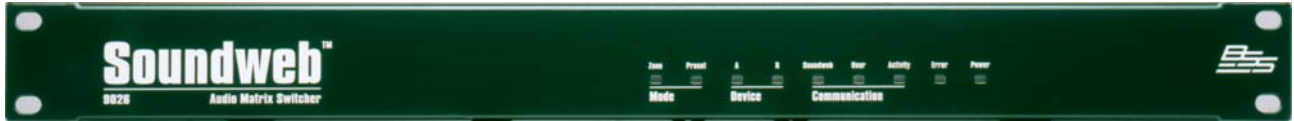


# SW9026 Audio Matrix Switcher

SOUNDWEB  
DESIGNER  
TM



Expanding the applications of Soundweb is the SW9026 Audio Matrix Switcher, allowing multiple audio sources to be routed by Soundweb Designer presets or simple remote control.

Integrating Soundweb Audio Processing and Networking with these switchers provides the ability to route selected inputs from a number of sources. There are many instances where only a number of signals from multiple sources are required simultaneously, and the SW9026 permits low-cost input expansion for Soundweb systems, as well as offering a standalone solution for source selection and matrixing.

The SW9026 features sixteen balanced audio inputs, and the eight balanced outputs can then feed a Soundweb 9088ii for processing and further zone distribution.

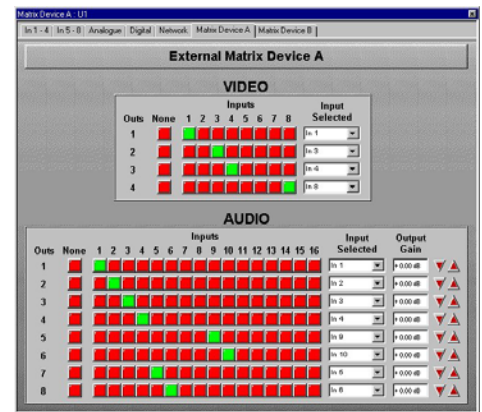
In addition to seamless integration within Soundweb systems, the SW9016 is equally suited to stand alone operation. When used in this way it can be used as a simple switcher or alternatively loaded with up to eight pre-sets that allow any combination of audio routing and level to be instantly recalled in up to four independent stereo zones. If no pre-sets are loaded, the units automatically default to a simple four zone source selector with 'audio follows video' routing, audio level control being independent for each zone.

Control can be remote via RS232 using simple string commands, or local from a contact closure port, for example using up to four SW9012 wall panels. The baud rate of the RS232 can be changed to suit the application. BSS can also supply an 'active X' plugin to aid the easy integration with bespoke windows based control applications.

BSS Audio supplies a standalone PC program that can be used to both set-up and control the devices when they are not part of a Soundweb system. To increase flexibility, up to two SW9026s may be connected to a single Soundweb or other RS232 device.

## SW9026 Audio Switcher Features

- ▶▶ 16 balanced audio inputs matrixable to 8 balanced audio outputs, freely assignable
- ▶▶ Controlled via Soundweb Designer or 9010/9012 controller presets, or a standalone PC application
- ▶▶ Simple control via simple switches
- ▶▶ 2 units may be cascaded to increase capacity



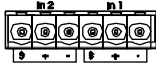
*Both the SW9016 Video/Audio Matrix Switcher and SW9026 Audio Matrix Switcher are programmable within Soundweb Designer*

*Preliminary Information  
March 2002*



# SW9026 Audio Matrix Switcher

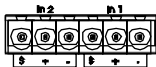
# Soundweb™



## Audio Input Connector

Each connector accommodates two inputs, pin 1 is on right when viewed from rear:

Pin 1: Input 1 (3,5,7,9,11,13,15) Screen (ground)  
 Pin 2: Input 1 (3,5,7,9,11,13,15) +ve (hot)  
 Pin 3: Input 1 (3,5,7,9,11,13,15) -ve (cold)  
 Pin 4: Input 2 (4,6,8,10,12,14,16) Screen (ground)  
 Pin 5: Input 2 (4,6,8,10,12,14,16) +ve (hot)  
 Pin 6: Input 2 (4,6,8,10,12,14,16) -ve (cold)

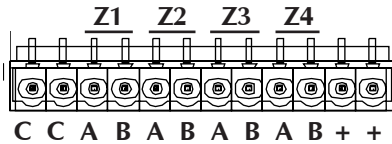


## Audio Output Connector

Each connector accommodates two outputs, pin 1 is on right when viewed from rear:

Pin 1: Input 1 (3,5,7,9,11,13,15) Screen (ground)  
 Pin 2: Input 1 (3,5,7,9,11,13,15) +ve (hot)  
 Pin 3: Input 1 (3,5,7,9,11,13,15) -ve (cold)  
 Pin 4: Input 2 (4,6,8,10,12,14,16) Screen (ground)  
 Pin 5: Input 2 (4,6,8,10,12,14,16) +ve (hot)  
 Pin 6: Input 2 (4,6,8,10,12,14,16) -ve (cold)

## Control port pin-outs



## Preset/Zone Trigger Inputs

Pin 1 is on right when viewed from rear:

Pin 1, 2, : +5V. Pin 11, 12 : Common  
 Zone Mode  
 Pin A Source Select, Pin B Gain  
 Preset Mode  
 Use Z1 connections only

## Technical Specifications

<b>Audio Inputs</b>	16 Balanced Audio inputs on Phoenix Combicon removable screw connectors.
<b>Routing</b>	16x8 Audio Matrix, each channel independently addressable
<b>Input Impedance</b>	10kOhm
<b>Maximum Input Level</b>	+20dBu
<b>THD</b>	<0.02%
<b>Frequency Response</b>	20Hz-20kHz +0/-0.2dB
<b>S/N Ratio</b>	>110dB at unity gain
<b>Crosstalk</b>	<-100dB
<b>CMRR</b>	>40dB
<b>Audio Outputs</b>	8 Balanced Audio Outputs on Phoenix/Combicon removable screw connectors.
<b>Output gain</b>	adjustable, -inf to +20dB
<b>Control &amp; Presets</b>	
<b>Presets</b>	8 presets per video output zone when used with standalone PC app
<b>Serial Control Port</b>	RS232 connects to Soundweb 9088ii, 9008ii or 9000ii or PC
<b>Dimensions</b>	1RU (3.5") high, 19" wide, 6.6" deep (45mm x 445mm x 168mm)
<b>Weight</b>	2.3kgs (5lbs)

*BSS Audio have a policy of continued product improvement and accordingly reserve the right to change features and specifications without prior notice. May 2005*

Preliminary  
Information  
March 2002



**BSS Audio UK** A Division of Harman International Industries Ltd  
 Cranborne House, Cranborne Road, Potters Bar,  
 Hertfordshire, England, EN6 3JN  
 Tel +44 (0)1707 660667, Fax +44 (0)1707 660755  
 www.bss.co.uk/soundweb/  
 email: soundweb@bss.co.uk

**Harman Music Group**  
 8760 S. Sandy Parkway  
 Sandy, Utah 84070  
 Tel: 801-566-8800 Fax: 801-568-7662  
 web: www.bssaudious.com  
**H** A Harman International Company