

# SX218GRIDi

## INSTALLATION FLYING FRAME FOR SX218

### Features

- Two point lift
- Available in black (SX218GRIDi) or white (SX218GRIDi-W)

### Applications

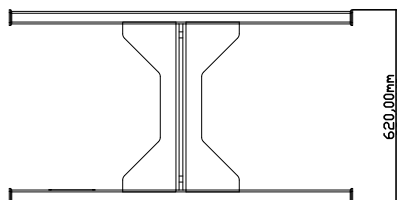
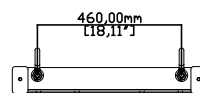
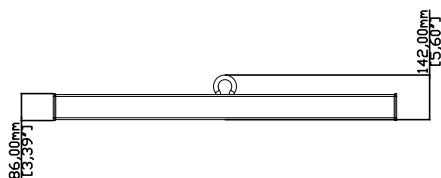
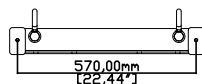
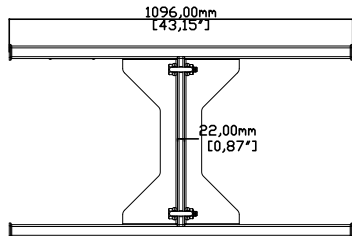
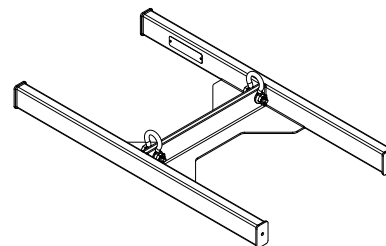
- Installation of up to 6 flown SX218 subwoofers when used in conjunction with the SX218FKIT

### Contents

- 1 x SX218 install flying frame
- 4 x M10x50 BTN SKT bolt
- 4 x M10 washer
- 2 x 3.25t shackle

### Technical Specifications

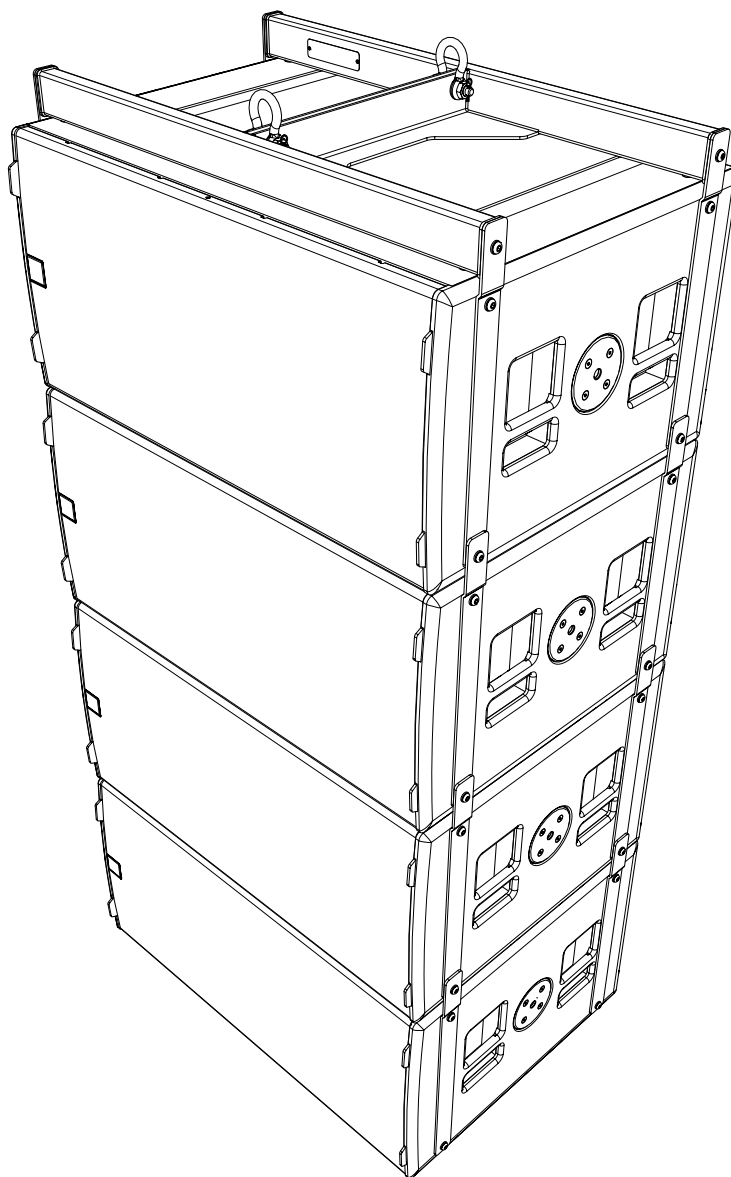
WEIGHT	23kgs (50.7lbs)
MATERIAL	Weatherised polyster powder coated steel



# SX218GRiDi

INSTALLATION FLYING FRAME FOR SX218

## Application Examples



Martin Audio Ltd  
Century Point, Halifax Road, High Wycombe  
Buckinghamshire HP12 3SL, England

Telephone: +44 (0) 1494 535 312  
Email: [info@martin-audio.com](mailto:info@martin-audio.com)

All information is Copyright © 2018 Martin Audio Ltd.



[www.martin-audio.com](http://www.martin-audio.com)