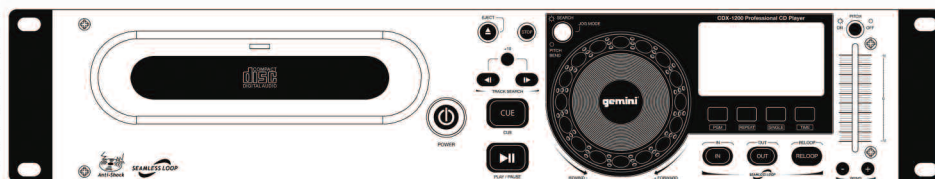


gemini[®]

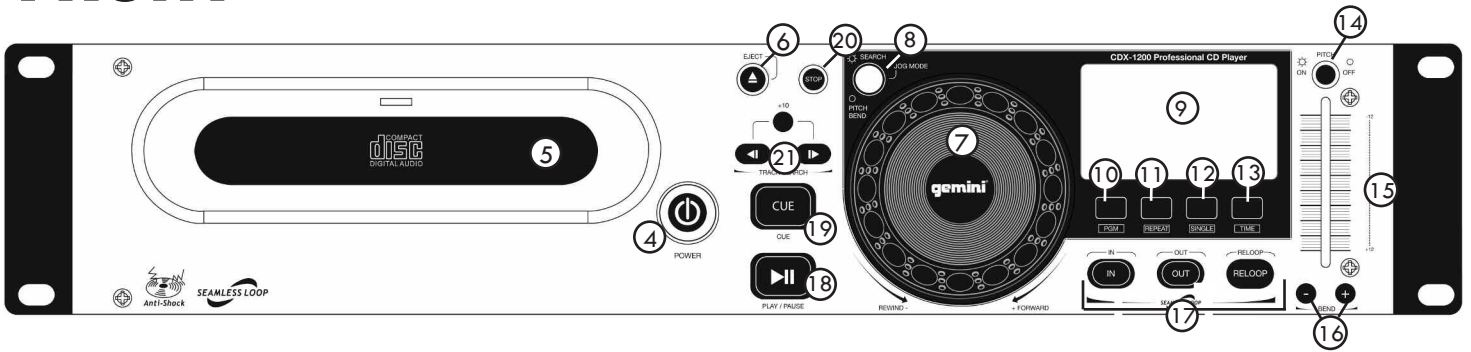
SINGLE CD PLAYER **CDX-1200**

OPERATING INSTRUCTIONS
INSTRUCCIONES DE OPERACION
MODE D'EMPLOI
OPERATING INSTRUCTIONS

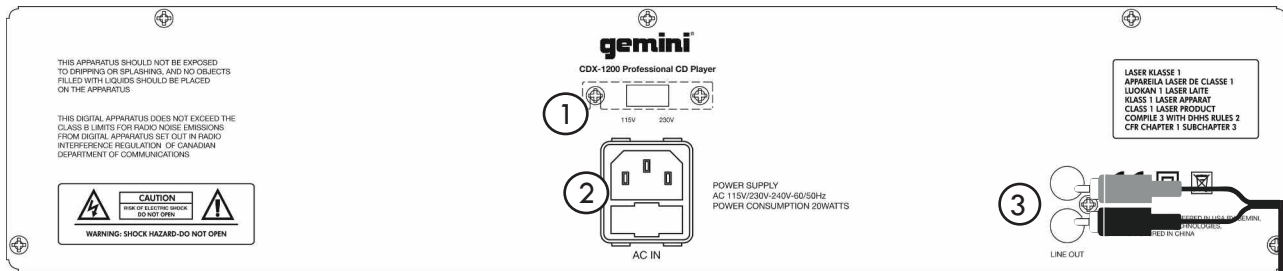
FOR ENGLISH READERS	PAGE 2 ~ PAGE 5
FOR SPANISH READERS	PAGE 6 ~ PAGE 9
FOR FRENCH READERS	PAGE 10 ~ PAGE 13
FOR GERMAN READERS	PAGE 14 ~ PAGE 17



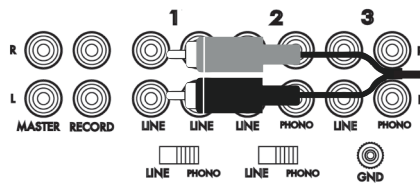
FRONT



BACK



Power



REAR PANEL OF
MIXER
(NOT INCLUDED)

INTRODUCTION:

Congratulations on purchasing the **Gemini CDX-1200 CD Player**. This state of the art **2U professional CD player** is backed by a 1 year warranty*. Prior to use, we suggest that you carefully read all the instructions.

FEATURES:

- Audio CD, CD-R CD-RW compatible
- Anti-shock using RAM buffer memory
- 2 Selectable Jog modes Pitch Bend/Search
- Instant-start & cue with preview
- Single auto-cue/continuous play modes
- Seamless loop with reloop
- Pitch bend via jog wheel or buttons
- Three mode time selection
- Frame accurate search
- Large blue backlit LCD display
- Coaxial RCA digital output
- Rubber jog wheels with finger grips
- Variable pitch control with a 16% range

SAFETY SPECIFICATIONS:

Laser Diode Properties

Material: Ga - Al - As

Wavelength: 755 - 815 nm (25° C)

Laser Output: Continuous Wave, max. 0.5 mW

PRECAUTIONS:

1. Do not use this CD player at temperatures below **41°F/5°C** or higher than **95°F/35°C**.
 2. The apparatus should not be exposed to dripping or splashing, and no objects filled with liquids such as vases should be placed on the apparatus.
 3. Place the unit in a clean and dry location.
 4. Do not place the unit in an unstable location.
 5. When disconnecting the power cord from the AC outlet, always grasp it by the plug. Never pull the power cord.
 6. To prevent electric shock, do not remove the cover or the bottom screws.
 7. There are **NO USER SERVICEABLE PARTS INSIDE**. Please refer to a qualified technician.
- IN THE USA ~ IF YOU EXPERIENCE PROBLEMS WITH THIS UNIT CALL GEMINI
CUSTOMER SERVICE AT: 1 (732) 346-0061. DO NOT ATTEMPT TO RETURN THIS EQUIPMENT
TO YOUR DEALER.
8. Do not use chemical solvents to clean the unit.
 9. Keep the laser pickup clean by keeping the tray closed.
 10. Keep this manual in a safe place for future reference.

CONNECTIONS:

- ① **VOLTAGE SELECTION SWITCH** Before plugging the **CDX-1200** into any wall outlet, make sure that the **VOLTAGE SELECTION SWITCH** is set to the proper voltage.
To change this selection unscrew the hard plastic protective top with a Phillips head screw driver. Then use a flat head screw driver to move the switch to the proper selection (**115V** or **230V**).
Do not force or twist the switch. Excessive force may cause damage, if the switch does not move smoothly, contact a qualified technician.

- ② **POWER** After you have properly set the **VOLTAGE LINE SELECTOR SWITCH** you may plug in the power cord of the **CDX-1200**.
- ③ **LINE OUTPUT JACKS** Plug one end of the included **RCA** cable into **LINE OUTPUT JACKS** on the rear panel. Plug the other end of the **RCA** connectors into any available line input jacks on your mixer. If you are connecting the **CDX-1200** through a receiver, you can plug the **RCA** connectors into the **CD** or **AUX INPUT JACKS** on your receiver. If there are no **CD** or **AUX INPUTS** use any line level (not phono) inputs.

FUNCTIONS:

- ④ **POWER:** Once you have connected all your cables and made sure that the **VOLTAGE SELECTION SWITCH** is set correctly, you can turn the **CDX-1200** on by pressing the **POWER** button, pressing the **CDX-1200's POWER** button a second time will turn off the unit.
- ⑤ **DISC TRAY:** The **DISC TRAY** is where the **CD** is held during loading, unloading and playback, and holds both 12 cm and 8cm CD's. **(DO NOT FORCE THE CD TRAY TO CLOSE EXCESSIVE FORCE WILL DAMAGE THE CD MECHANISM, USE THE OPEN AND CLOSE BUTTONS)**
- ⑥ **EJECT BUTTON:** Pressing the **EJECT BUTTON** will open or close the **DISC TRAY**, unless the **CDX-1200** is in play mode, then you must first stop the side you wish to eject.
- ⑦ **JOG WHEEL :** In **SEARCH MODE** the **JOG WHEEL** can be used to search forward or backwards in the music track, as well as for fine adjustments to a **CUE** point in **PAUSE** mode. In **PITCH BEND** mode the **JOG WHEEL** will function the same as the **PITCH BEND** allowing you to speed up (**FORWARD**) or slow down (**REWIND**) the music clockwise being (**FORWARD**) and counter clockwise being (**REWIND**).
- ⑧ **JOG MODE BUTTON:** When the **JOG MODE BUTTON** is illuminated it indicates the the **JOG WHEEL** is in **SEARCH MODE**, and when not illuminated it indicates that the **JOG WHEEL** is in **PITCH BEND MODE**.
- ⑨ **DISPLAY:** The **DISPLAY** shows the track number, pitch value, pitch bend, single, continue (for continuous play), play/pause modes, fast forward/reverse modes, loop mode, reloop mode, **PGM**, repeat modes, the playback display bar, and three different time displays. These times displays are **TIME ELAPSED** on the track, **TIME REMAINING** on the disc and and **TIME REMAINING** on the track. Time is measured in minutes, seconds and frames.
- ⑩ **PGM:** Allows you to create a set playlist. To program a set list into the **CDX-1200** memory, begin by stopping the unit from play and pressing **PGM** to begin the set list. Select a track by using the track selection button to scan to the first track to be placed in the set list. When you have selected the proper track press **PGM** and the **CDX-1200** will be ready to set your next selection. Repeat the previous steps until you have completed your playlist, then press play to begin the set list.
- ⑪ **REPEAT:** Press the repeat button once to engage **1** or repeat the selected track. Press **REPEAT** again to engage **ALL** setting which will repeat all the tracks on the **CD**. Press **REPEAT** again to disengage the repeat function

FUNCTIONS: (CONTINUED)

- 12 **SINGLE:** Pressing the **SINGLE** button engages **SINGLE** mode, in this mode the **CDX-1200** will play one song and then stop. Pressing the **SINGLE** button again will then activate **CONTINUOUS** mode causing the unit to play continuously (after the last track, the unit will return to the first track of the disc and continue to play).
 - 13 **TIME:** The **TIME** **BUTTON** switches the time display between three available sources, these three are **TIME ELAPSED** on the track, **TIME REMAINING** on the disc and **TIME REMAINING** on the track. **TIME ELAPSED** indicates how much time has currently gone by since the play button was pressed, **TIME REMAINING ON DISC** will count down the time remaining on the entire disc and **TIME REMAINING ON TRACK** counts down the time that is left before the end of the track.
 - 14 **PITCH:** Pushing the **PITCH** button (the button will light up blue) activates the **PITCH CONTROL SLIDE**. The pitch or speed of the **CD** will change plus or minus 12% depending on the position of the **PITCH CONTROL SLIDER**. Push the **PITCH** button again to deactivate this mode.
 - 15 **PITCH CONTROL SLIDE:** Moving the **PITCH CONTROL SLIDE** up or down will lower or raise the pitch percentage + or - 12%.
 - 16 **PITCH BEND:** Pushing the **PITCH BEND** **BUTTONS** will automatically raise the pitch up to +16% or lower the pitch down to -16% from the existing pitch setting. Releasing the buttons will return the pitch to the original pitch setting. You can use this function to match the beat when mixing from one song to another
 - 17 **LOOP SECTION:** A **LOOP** repeats the section between the entry point (**IN**) and the exit point (**OUT**). To set a loop while the unit is playing, start by pressing the **IN** **BUTTON** (it will light up) and when you reach the desired end loop point press the **OUT** **BUTTON** (it will also light up). The loop will continue playing until you press the **OUT** **BUTTON** again allowing the music to continue from that point on, to re-engage the loop you must press the **RELOOP** **BUTTON**. When you have released your loop the **OUT** **BUTTON** will turn **OFF** and the **IN** **BUTTON** will remain lit to indicate that your loop is stored in the **CDX-1200** memory. Pressing the **IN** **BUTTON** again while the unit is playing will erase the previously saved loop while saving your new loop entry point. Press **OUT** to exit the loop and save a new complete loop. Press **RELOOP** to return to the beginning of the previously saved loop from normal play. Press **RELOOP** repeatedly to cause the loop to stutter.
- NOTE: THE FIRST LOOP WILL HAVE A PAUSE AT THE EXIT POINT, WHILE ALL OTHERS WILL BE SEAMLESS.**
- 18 **PLAY/PAUSE:** Each press of the **PLAY/PAUSE** **BUTTON** causes the operation to change from **PLAY** to **PAUSE** or from **PAUSE** back to **PLAY**. The **PLAY/PAUSE** **BUTTON** remains lit when in **PLAY** mode, while it blinks in **PAUSE** mode.
 - 19 **CUE:** While the unit is playing and after the cue point has been programmed, pressing **CUE** will cause the **CD** player to enter the **PAUSE** mode (**PLAY/PAUSE** **BUTTON** blinks) at the programmed cue point (the **CUE** **LED** is lit). Holding down the **CUE** button changes the function to preview, and allows you to stutter start or play from the programmed **CUE** **POINT** Releasing the **CUE** button will return the **CD** to the preset **CUE** point.
 - 20 **STOP** **BUTTON:** When pressed the **STOP** **BUTTON** stops the playback of the **CD** player.

- 21 **TRACK SELECTION:** The **TRACK SELECTION** buttons let you select the track to play. **+10** allows you to scan through the track selection in increments of 10. **TRACK SKIP** allows you to scan through each track one at a time.

NOTE : ONCE YOU HAVE SKIPPED TO ANOTHER TRACK, YOU MAY NOT GO BACK TO YOUR PROGRAMMED CUE POINT. YOU MUST BEGIN YOUR CUE SELECTION OVER AGAIN, THE CUE WILL BE PRESET TO THE BEGINNING OF THE NEWLY SELECTED TRACK.

TROUBLESHOOTING:

- If a disc will not play, check to see if the disc was loaded correctly (label side up). Also check the disc for excessive dirt, scratches, etc.
- If the disc turns but there is no sound, check the cable connections, if they are ok, check your amplifier or receiver.
- If the CD skips, check the CD for dirt or scratches. Do not assume that the CD player is defective. Many cd's are recorded out of spec and will skip on most or all CD players. Before sending the unit for repair, try playing a CD that you are sure plays properly.

SPECIFICATIONS:

GENERAL:

Type.....Compact Disc Player
 Disc Type.....Standard Compact discs (12 cm & 8 cm)
 Time Display.....Track Elapsed, Track Remain, or Total remain
 Variable Pitch.....± 12% Slider with Resume Switch
 Pitch Bend.....± 16% Maximum
 Instant Start.....Within 0.03 seconds
 Installation.....19" each
 Dimensions.....Main unit: 19" x 3.5" x 10" (482.6 x 88.9 x 254 mm)
 Weight Per Unit.....Main unit: 11.35 lbs. (5.14 kg)

AUDIO SECTION:

Quantization.....1 Bit Linear/Channel, 3 Beam Laser
 Oversampling Rate.....8 Times
 Sampling Frequency.....44.1 kHz
 Frequency Response.....20 Hz to 20 kHz
 Total Harmonic Distortion.....Less Than 0.05%
 Signal to Noise Ratio.....85 dB
 Dynamic Range.....85 dB
 Channel Separation.....85 dB (1 KHz)
 Output Level.....2.0 +/- 0.2V R.M.S.
 Power Supply.....AC 115/230V, 60/50 Hz

SPECIFICATIONS AND DESIGN ARE SUBJECT TO CHANGE WITHOUT NOTICE FOR PURPOSE OF IMPROVEMENT.

