



# Hollyland Solidcom C1 Pro

User Manual

V1.0.0



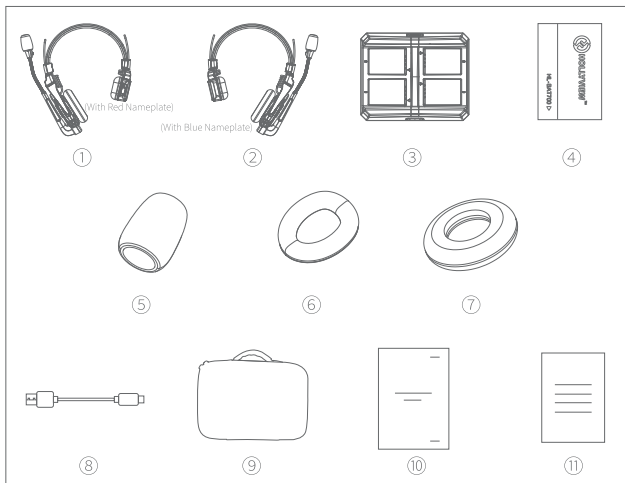
# Introduction

Thank you for purchasing Hollyland Solidcom C1 Pro full-duplex wireless noise cancelling intercom system.

The Solidcom C1 Pro, adopting the advanced DECT technology, is Hollyland's first wireless self-contained intercom system with Environmental Noise Cancellation (ENC). The system operates in the 1.9GHz band, providing a reliable LOS range of up to 1,100ft (350m).

This User Manual will help you through the installation and use of the equipment.

# Packing List



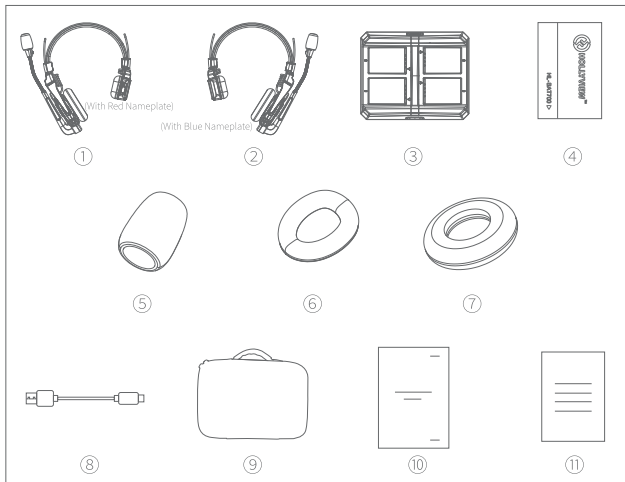
## Solidcom C1 Pro - 2S 2-person Noise Cancelling Headset Intercom

① Master Headset (With Red Nameplate)	x1
② Remote Headset (With Blue Nameplate)	x1
③ Charging Case	x1
④ Battery	x4
⑤ Microphone Cushion	x2
⑥ Over-ear Leather Cushion	x2
⑦ On-ear Foam Cushion	x2
⑧ USB-A to USB-C Cable	x1
⑨ Storage Case	x1
⑩ User Manual	x1
⑪ Warranty Card	x1

Note: The quantity of the items depends on the product configuration.



# Packing List

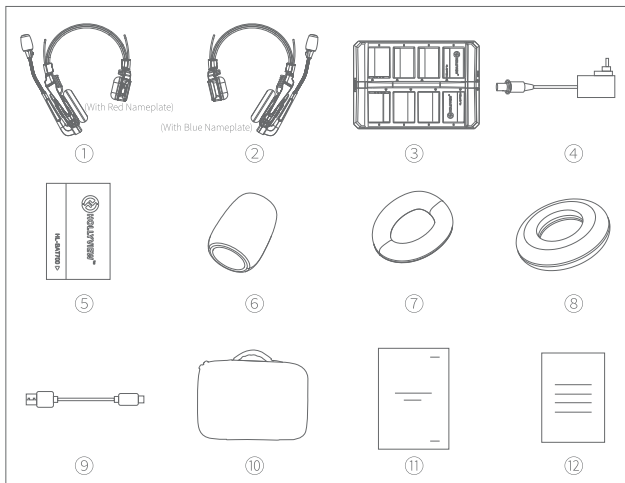


## Solidcom C1 Pro - 3S 3-person Noise Cancelling Headset Intercom

① Master Headset (With Red Nameplate)	x1
② Remote Headset (With Blue Nameplate)	x2
③ Charging Case	x1
④ Battery	x6
⑤ Microphone Cushion	x3
⑥ Over-ear Leather Cushion	x3
⑦ On-ear Foam Cushion	x3
⑧ USB-A to USB-C Cable	x1
⑨ Storage Case	x1
⑩ User Manual	x1
⑪ Warranty Card	x1

Note: The quantity of the items depends on the product configuration.

# Packing List

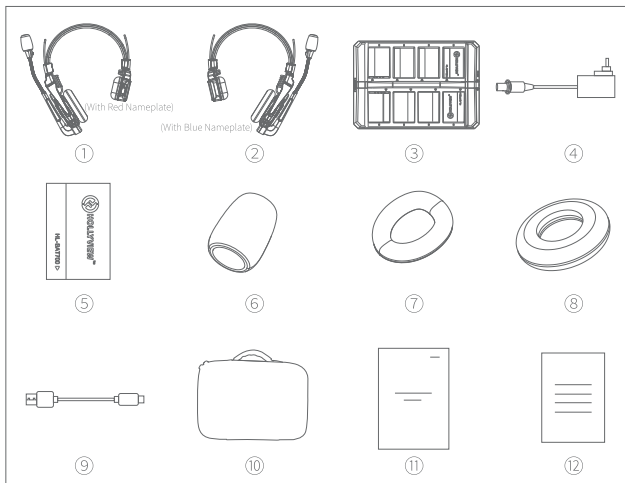


## Solidcom C1 Pro – 4S 4-person Noise Cancelling Headset Intercom

① Master Headset (With Red Nameplate)	x1
② Remote Headset (With Blue Nameplate)	x3
③ Charging Case	x1
④ DC Adapter	x1
⑤ Battery	x8
⑥ Microphone Cushion	x4
⑦ Over-ear Leather Cushion	x4
⑧ On-ear Foam Cushion	x4
⑨ USB-A to USB-C Cable	x1
⑩ Storage Case	x1
⑪ User Manual	x1
⑫ Warranty Card	x1

Note: The quantity of the items depends on the product configuration.

# Packing List

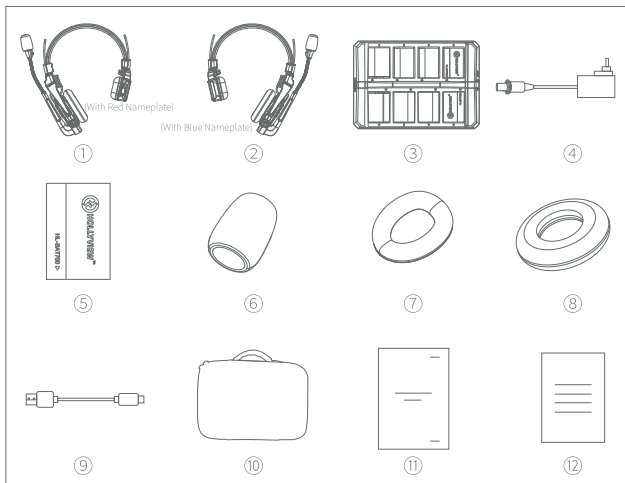


## Solidcom C1 Pro - 6S 6-person Noise Cancelling Headset Intercom

① Master Headset (With Red Nameplate)	x1
② Remote Headset (With Blue Nameplate)	x5
③ Charging Case	x1
④ DC Adapter	x1
⑤ Battery	x12
⑥ Microphone Cushion	x6
⑦ Over-ear Leather Cushion	x6
⑧ On-ear Foam Cushion	x6
⑨ USB-A to USB-C Cable	x1
⑩ Storage Case	x1
⑪ User Manual	x1
⑫ Warranty Card	x1

Note: The quantity of the items depends on the product configuration.

# Packing List



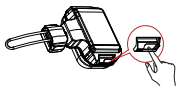
## Solidcom C1 Pro - 8S 8-person Noise Cancelling Headset Intercom

① Master Headset (With Red Nameplate)	x1
② Remote Headset (With Blue Nameplate)	x7
③ Charging Case	x1
④ DC Adapter	x1
⑤ Battery	x16
⑥ Microphone Cushion	x8
⑦ Over-ear Leather Cushion	x8
⑧ On-ear Foam Cushion	x8
⑨ USB-A to USB-C Cable	x1
⑩ Storage Case	x1
⑪ User Manual	x1
⑫ Warranty Card	x1

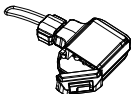
Note: The quantity of the items depends on the product configuration.

# Operation Guide

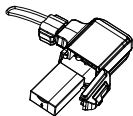
## ① Install the battery.



Step 1: Slide the battery compartment cover lock.

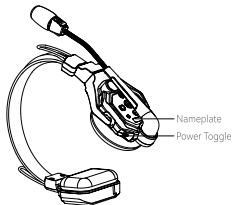


Step 2: Open the cover.



Step 3: Place the battery into the compartment and close the cover.

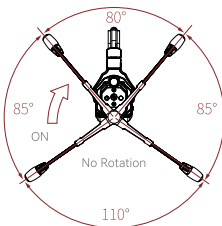
## ② Turn on the master headset and remote headsets.



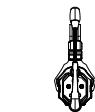
Master Headset Startup

1. Ensure that all the headsets are turned ON.
2. The indicator light stops flashing and stays ON when the master headset is successfully connected with the remote headsets.
3. Red nameplate: Master headset  
Blue nameplate: Remote headset

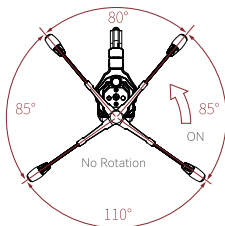
## ③ Turn on the microphone.



Rotate the microphone boom upwards clockwise.



Microphone Boom Rotation



Rotate the microphone boom upwards counterclockwise.

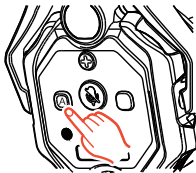
## ④ The Solidcom C1 Pro system is now ready for use.

## Pairing

The master headset is paired with the remote headsets at the factory. They are ready for use right out of box. Manual pairing is only required when a new headset is added to the system. During the pairing process, all the headsets must be turned ON and connected.

### Pairing steps:

1. Press and hold the A button on both the master headset and remote headsets for 5 seconds. Pairing is completed when the indicator light on each microphone boom stops flashing and stays ON.
2. One master headset can be paired with up to 7 remote headsets.



Solidcom C1 Pro is highly versatile and can be applied in a variety of usage scenarios.

For more information about how to operate this system, please visit

<https://hollyland-techhelp.zendesk.com/hc/en-us/categories/360005064994-Download>.

# Parameters

Transmission Range	1,100ft (350m) LOS
Frequency Band	1.9 GHz (DECT) (varies by country and region)
Modulation Mode	GFSK
TX Power	≤21dBm (125.9 mW)
RX Sensitivity	<-90dBm
Battery Capacity	700mAh (2.66Wh)
Operation Time	Remote headset: >10 hours (when ENC is turned ON) Master headset: >5 hours (when ENC is turned ON and the master headset is connected with 5 remote headsets) Master headset: >4 hours (when ENC is turned ON and the master headset is connected with 7 remote headsets)
Charging Time	About 2.5 hours
Frequency Response	ENC OFF: 150Hz-7kHz (fluctuation range: ±6dB) ENC ON: 150Hz-7kHz (fluctuation range: ±10dB)
Signal-to-Noise Ratio	71±2dB@94dBSPL, 1kHz
Distortion	<1%@94dBSPL, 150Hz-7kHz
Microphone Type	Electret
Input SPL	>115dBSPL
Output SPL	94±3dBSPL (@94dBSPL, 1kHz)
ENC	20dB±2 with two microphones (relative to environmental noise in all directions)
Net Weight	About 170g (6oz) with batteries included
Temperature Range	0°C to 45°C (working condition) -10°C to 60°C (storage condition)

Note: The frequency band and TX power vary by country and region.

## Safety Precautions

Do not place the product near or inside heating devices (including but not limited to microwave ovens, induction cookers, electric ovens, electric heaters, pressure cookers, water heaters, and gas stoves) to prevent the battery from overheating and exploding.

Do not use non-original charging cases, cables, and batteries with the product.

The use of non-original spare parts may cause electric shock, fire, explosion, or other dangers.



# Support

If you encounter any problems in using the product or need any help, please contact Hollyland Support Team via the following ways:

 Hollyland User Group

 HollylandTech

 HollylandTech

 HollylandTech

 [support@hollyland-tech.com](mailto:support@hollyland-tech.com)

 [www.hollyland-tech.com](http://www.hollyland-tech.com)

**Statement**

All copyrights belong to Shenzhen Hollyland Technology Co., Ltd.

**Trademark Statement**

Without the written approval of Shenzhen Hollyland Technology Co., Ltd., no organization or individual may copy or reproduce part or all of any written or illustrative content and disseminate it in any form.

**Note:**

Due to product version upgrades or other reasons, this User Manual will be updated from time to time.

Unless otherwise agreed, this document is provided as a guide for use only. All representations, information, and recommendations in this document do not constitute warranties of any kind, express, or implied.

## FCC Requirement

Any changes or modifications not expressly approved by the party responsible for compliance could void the user's authority to operate the device. This device complies with Part 15 of the FCC Rules.

Operations are subject to the following two conditions:

- (1) This device may not cause harmful interference.
- (2) This device must accept any interference received, including interference that may cause undesired operations.

### **FCC Radiation Exposure Statement:**

The device has been tested and complies with FCC SAR limits.

### **Note:**

This device has been tested and found to comply with the limits for a Class B digital device, pursuant to Part 15 of the FCC Rules. These limits are designed to provide reasonable protection against harmful interference in a residential installation. This device generates, uses, and can radiate radio frequency energy, and if it is not installed and used in accordance with the instructions, it may cause harmful interference to radio communications. However, there is no guarantee that interference will not occur in a particular installation. If this device does cause harmful interference to radio or television reception, which can be determined by turning the device off and on, the user is encouraged to try to correct the interference by one or more of the following measures:

- Reorient or relocate the receiving antenna.
- Increase the distance between the device and the receiver.
- Connect the device to an outlet on a circuit different from that to which the receiver is connected.
- Consult the dealer or an experienced radio/TV technician for help.