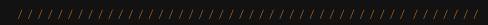


**Abgen**

Trusted LED Supplier



**PL lito**



**THE SMART CHOICE**

CURVE | QUICK | SOLID

# FEATURES

## 01

### Fast and Accurate Curve System

- Innovative Side Lock Design

- Front & Rear Module Maintenance
- Edge Protection
- Quick Swappable Power Box

### Quick Installation and Maintenance

## 02

## 03 Ultra Solid Performance

- Higher Image Quality
- New Cabinet Frame
- Waterproof Design

- Platform Design
- Hanging Bar & Stacking System
- Accessories

### Easy to Install

## 04

## 05 Service & Support

# THE SMART CHOICE

CURVE | QUICK | SOLID



PL3.9 XL lite | PL3.9W XL lite | PL4.8W XL lite



PL2.5 lite | PL2.9lite | PL3.9 lite |  
PL3.9W lite | PL4.8W lite |

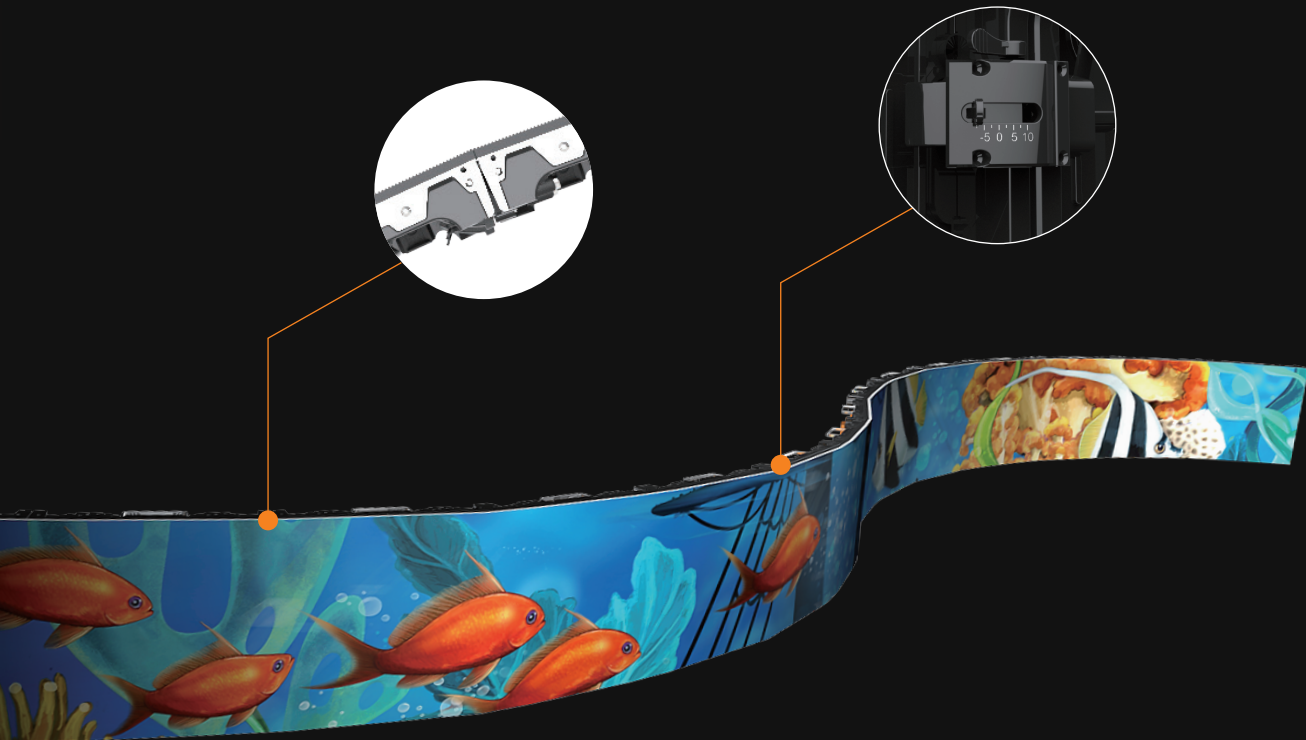
01

## Fast and Accurate Curve System

· Innovative Side Lock Design







## • Innovative Side Lock Design

There is no need of any additional tool to quickly adjust from flat screen to a curved one.

Enable  $-7.5 \sim -10^\circ$  at every  $2.5^\circ$  step, support  $+10^\circ, \pm 7.5^\circ, \pm 5^\circ, \pm 2.5^\circ, 0^\circ$

Absen proprietary locking system, more solid, more accurate.

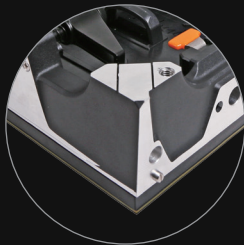
- Front & Rear Module Maintenance
- Edge Protection
- Quick Swappable Power Box

## Quick Installation and Maintenance 02



- **Front & Rear Module Maintenance**

Supports front & rear maintenance, easy to replace module.



- **Edge Protection**

Step designed on bottom of the cabinet, keep LEDs away from ground.






- **Quick Swappable Power Box**

Replace in seconds with a quick release system.  
Serviceable from the back without tools.



- **One Man Installation**

Quick and simple to use top locks, designed for easy  
one man handling



# The Opening Ceremony

XX. Weltkongress für  
Sicherheit und Gesundheit  
bei der Arbeit 2014  
COWI/ISSA Forum Prävention



03

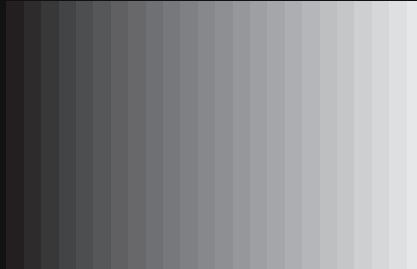
## Ultra Solid Performance

- Higher Image Quality
- New Cabinet Frame
- Waterproof Design



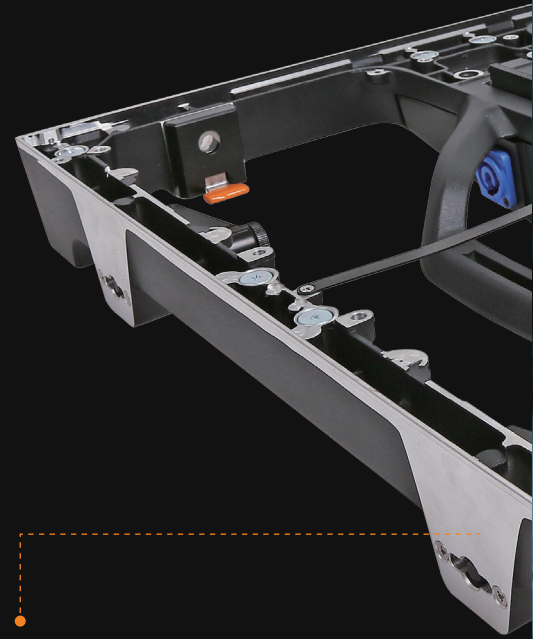
- **Higher Image Quality**

Combined with grey scale coding technology that is human eye friendly, the new control system has greatly improved the industry-common problem of losing grey scale at low brightness, to provide a much more vivid image.



After

Before



**New Cabinet Frame Is Stronger,  
More Accurate**

- **Waterproof Design**

IP65/54 waterproof design for PL3.9W lite & PL4.8W lite, ultra reliable in all weather conditions.





- Platform Design
- Hanging Bar & Stacking System
- Accessories

# Easy to Install 04

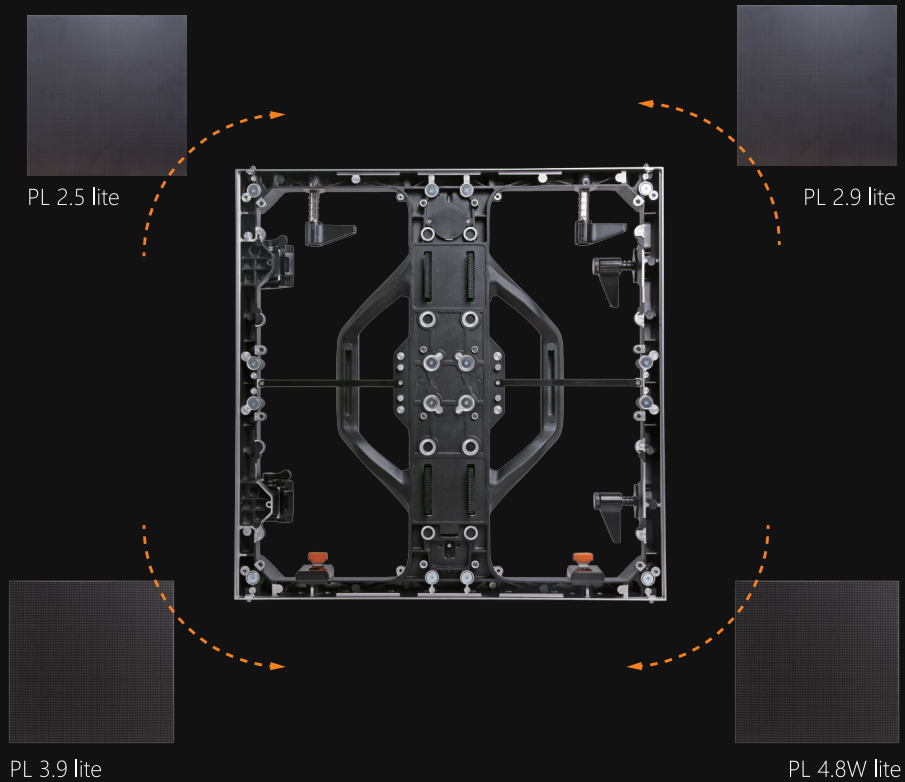




- **Platform Design**

4 different pixel modules can be used on one frame.

Save customer money on product, accessories and training.



- **Lighten Up and Go Large**

Super lightweight and twice the size, perfect for the operational demands of extra large outdoor display applications



## Lightweight

Panel weight only  
**12.5Kg**

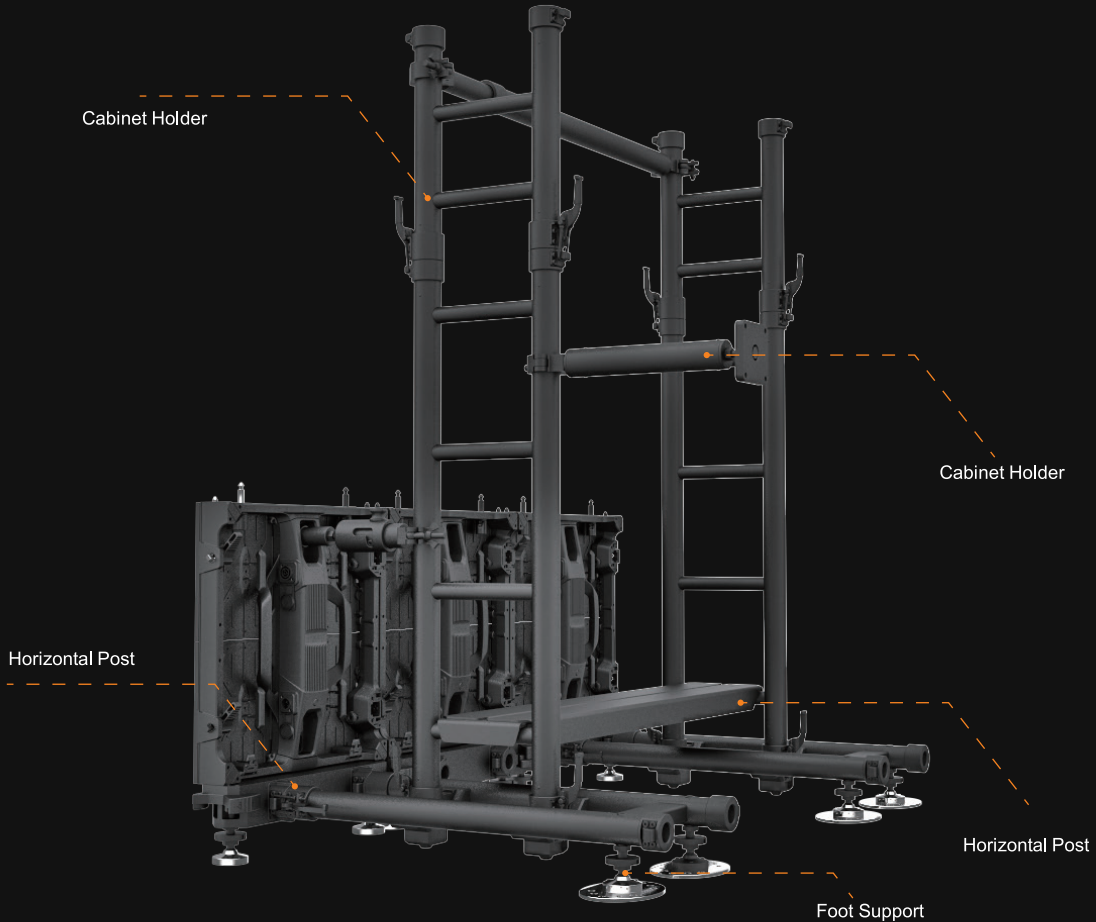
More than  
**20% lighter**  
than regular products

## Quick

One man installation  
Quickly service power box

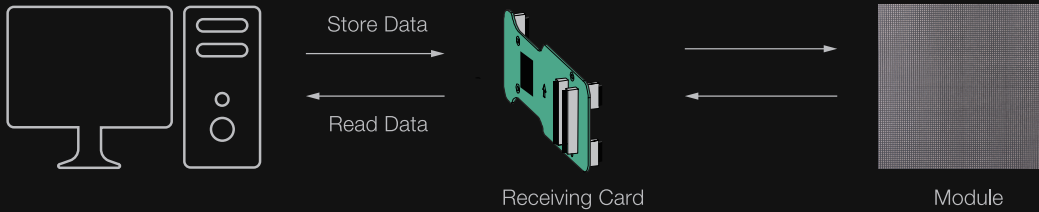
- **Stacking**

Designed by industry veteran, the latest Universal Stacking System is simple to use, reliable in quality, with all details considered from massive experience of on field use. The tool free installation design makes it a lot easier for technicians who will never need to look around for tools.



- **MoM**

Memory on module design enables to store data in both receiving card and the modules. When module or receiving card is replaced due to repair reason, there is no need of re-calibration.



- **Shipping**

Super lightweight 6 in 1 flight case, half weight of ordinary design. Save weight, save cost



6 In 1 Flight Case

- **Processing**

Premium image quality, 4K processing





- **Hanging Bar**

Super lightweight, simple to use hanging bars with integrated curve plate.  
Stringent pulling strength test to assure safe use, guaranteed reliability.



Double Hanging Bar



Single Hanging Bar

Hanging Bar comes in two styles and sizes

# 05 Service & Support

## 8+ Overseas Subsidiaries

USA Germany UAE Russia Mexico Brazil Japan HK



### Barcode

Barcodes to trace product details



### Solutions

Complete solutions enhances operation efficiency



### Online Service

Helpline 400, 24 hours online service



### Zero Down Payment

Set "Zero Down Payment" as industrial standard



### ACE

ACE training - global accessibility



### Network System

Whole network system makes life easier



### Platform

Build platform for more active interaction



### Customized

Customized products for clients

ACE, short for ABSEN CERTIFIED ENGINEER, is a program launched by Absen in the purpose of training our clients, freelancers, whoever might need to work with our screens, to better know the use and maintenance of our products. Since 2013, Absen has successfully trained and certified hundreds of technicians worldwide to better understand LED technology and Absen products. Unlike other leading companies, Absen is offering such services completely free of charge. It has greatly benefited both our clients and Absen ourselves.



# SPECIFICATION

Parameters	PL2.5 lite	PL2.9 lite	PL3.9 lite	PL3.9 XL lite	PL3.9W lite	PL3.9W XL lite	PL4.8W lite	PL4.8W XL lite	Unit
Pixel Pitch	2.5	2.97	3.9	3.9	3.9	3.9	4.8	4.8	Millimeter
Brightness	1000	1000	1000	1000	4000	4000	4000	4000	nit
Panel Dimensions	500*500*87	500*500*87	500*500*87	500*1000*87	500*500*87	500*1000*87	500*500*87	500*1000*87	Millimeter
Panel Material	Die casting Aluminum								—
Panel Weight	9	9	9	12	9.5	12.5	9.5	12.5	Kg / Panel
Pixels	SMD 1415	SMD 2121	SMD 2121	SMD 2121	SMD 1921	SMD 1921	SMD 1921	SMD 1921	—
Module Size	250*250	250*250	250*250	250*250	250*250	500*250	250*250	500*250	Millimeter
Panel Resolution	200*200	168*168	128*128	128*256	128*128	128*256	104*104	104*208	Pixels
Pixel Density	160000	112896	65536	65536	65536	65536	43264	43264	Pixels / sqm
Refresh Rate	3840	3840	1920	1920	1920	1920	1920	1920	Hertz
Grayscale	16384	16384	16384	16384	16384	16384	16384	16384	Grade
Viewing Angle(H/V)	150/140	140/120	140/120	140/120	140/120	140/120	140/120	140/110	Degree
Ingress Protection	IP40/IP21	IP40/IP21	IP40/IP21	IP40/IP21	IP65/IP54	IP65/IP54	IP65/IP54	IP65/IP54	—
Power(max/ ave.)	540/180	540/180	540/180	540/180	600/200	600/200	600/200	600/200	Watts / sqm
Drive mode	1/20	1/28	1/16	1/16	1/8	1/8	1/7	1/7	—
Maximum Hanging	20	20	20	10	20	10	20	10	Panels

★ Shenzhen Absen Optoelectronic Co., Ltd. reserves the right to modify product design, specifications, and parameters without further notice.  
Photos are used for illustration purpose only as products may differ from these photos. All rights reserved by Shenzhen Absen Optoelectronic Co., Ltd.



## Shenzhen Absen Optoelectronic Co., Ltd.

18-20F Building 3A, Cloud Park, Bantian, Longgang District, Shenzhen 518129, P.R.China  
T: +86-755-89747399 E: absen@absen.com  
F: +86-755-89747599 W: www.absen.com

## Absen Inc.

7120 Lake Ellenor Drive, Orlando, FL 32809, USA  
T: +1-407-203-8870 E: info@usabsen.com  
F: +1-407-203-8873 W: www.usabsen.com

## Absen GmbH

Eisenstraße 5, 65428 Rüsselsheim a.M., Germany  
T: +49 (0) 6142 78935-0 E: europe@absen.com  
F: +49 (0) 6142 78935-29 W: www.europe-absen.com