

# forum™

COLLABORATION SUITE

**This is how Hybrid works.** Forum™ has a Free Standing or Floor-to-Wall mounted Display Stand with an included Chief Fusion display mount that can be paired with Forum Angle, Arc or Rectangle shaped tables to define your space for hybrid collaboration.

## FEATURES

### Forum™ Display Stand Features & Benefits

- Free standing or floor-to-wall mounted with an included Chief Fusion Display Mount
- 4RU of vertical equipment mounting with access via doors on the front and panels on the back (rear panels on free-standing models only)
- Included Lever Lock™ plate with optional Lever Lock kit for more small device mounting
- Includes display shroud (multiple sizes available for single displays ranging from 42" to 105" and dual displays ranging from 50" to 75")
- Stand and included display shroud wrapped in acoustic felt material to limit audio reverberation for the highest quality audio experience for local and remote participants
- The slim base on the free-standing and floor-to-wall takes up minimal floor space and can accept Wiremold OFR and Connectrac raceways underneath with the 1" leveling foot



Forum™ Free-Standing  
Display Stand in Light Finish



Forum™ Floor to Wall  
Display Stand in Light Finish



Forum™ Free-Standing  
Display Stand in Dark Finish



Forum™ Floor to Wall  
Display Stand in Dark Finish

LEGRAND | AV COMMERCIAL BRANDS

C2G | Chief | Da-Lite | Luxul | Middle Atlantic | Vaddio | Wiremold

# forum™

COLLABORATION SUITE

## SPECIFICATIONS

The Forum Display Stand shall be Middle Atlantic Products model # \_\_\_\_\_ (refer to chart). The Forum Display Stand shall be offered in free standing or floor-to-wall mounted versions. Overall dimensions of the Forum Display Stand shall be \_\_\_"H x \_\_\_" W x \_\_\_"D (see drawing). The Forum Display Stand display height shall be from \_\_\_ to \_\_\_ (refer to chart). The Forum Display Stand shall include a Chief Fusion Display Mount supporting up to \_\_\_\_\_ displays (refer to chart) and supports \_\_\_lbs (refer to chart). The Forum Display Stand shall have pre-installed leveling glides. The Forum Display Stand shall have a \_\_\_\_\_ (refer to chart) finish. The Forum Display Stand shall include a display shroud. The Forum Display Stand shall have a steel subframe. The Forum Display Stand shall have a acoustic felt made from polyethylene terephthalate (PET) covering (Upper 2/3) and high pressure laminate (lower 1/3). The Forum Display Stand shall provide 2x 2 rackspace vertical mounting (4RU total) with a maximum of \_\_\_" usable depth (refer to drawing) and 100lbs weight capacity (50lbs per bay). The Forum Display Stand shall include a Lever Lock plate: (LL-VP2110). To add more Lever Lock in the same area, see the option Lever Lock kit (DSA-DW-LLKIT1 for use with 48" models).

The Forum Display Stand shall have knockouts for six AVIP panels and two Single Gang Box knockouts. The Forum Display Stand shall accommodate one display and have horizontal VESA mounting patterns of 300, 400, 500, 600 and 800, and a vertical VESA pattern of 100, 200, 300 and 400. The Forum Display Stand shall have an overall weight capacity of \_\_\_lbs (refer to chart), with no more than \_\_\_lbs (refer to chart) for the monitor. The Forum Display Stand shall be warrantied to be free from defects in material or workmanship under normal use and conditions for 10 years, sheet metal components shall be warrantied to be free from defects in material or workmanship under normal use and conditions for 25 years. The Forum Display Stand shall be manufactured by an ISO 9001 and ISO 14001 registered company.

For specifications on the acoustic felt made from polyethylene terephthalate (PET) please visit <https://www.focalpointlights.com/reference>

EIA/TIA COMPLIANT

ISO 9001 and ISO 14001

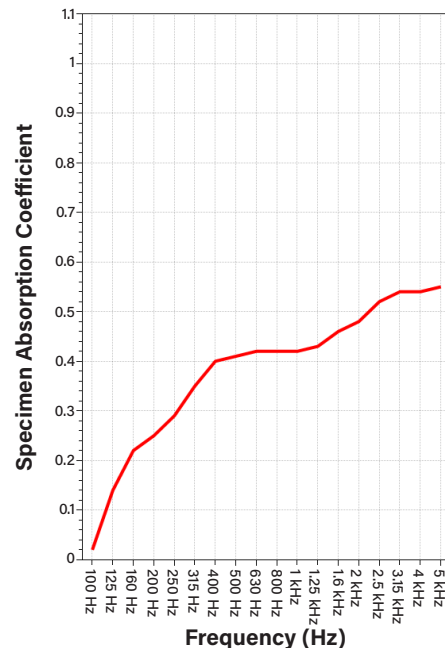
## Free-Standing Display Stand Acoustic Performance

Acoustic testing was performed by Riverbank Acoustical Laboratories on the Forum™ Collaboration Suite Free-Standing Display Stand (Part Number: FM-DS-6675FS-JD8W), with the stand mounting performed according to ASTM E795-23 and ASTM C423-23. **The Display Stand in this test provided an NRC value of 0.40 in our test.**

Please note that results may vary based on the installation and configuration of the Display Stand.

The ASTM C423-23 test report can be obtained upon request by contacting [av.middleatlantic.techsupport@legrand.com](mailto:av.middleatlantic.techsupport@legrand.com).

**SOUND ABSORPTION REPORT**  
Forum Collaboration Suite Display Stand



## What is NRC?

Noise Reduction Coefficient (NRC) is the average of how absorptive a material is at various frequencies within the human speech frequency range. Two materials with the same rating may not perform the same in application. Typically, an NRC of 0 indicates perfect reflection and an NRC of 1 is designated as perfect absorption.

Example: If you have a ceiling with an NRC of 0.70, this means 70% of sound is absorbed into the ceiling. The other 30% is dissipated into the space. The higher the NRC, the less echo (reverberation) in the space.

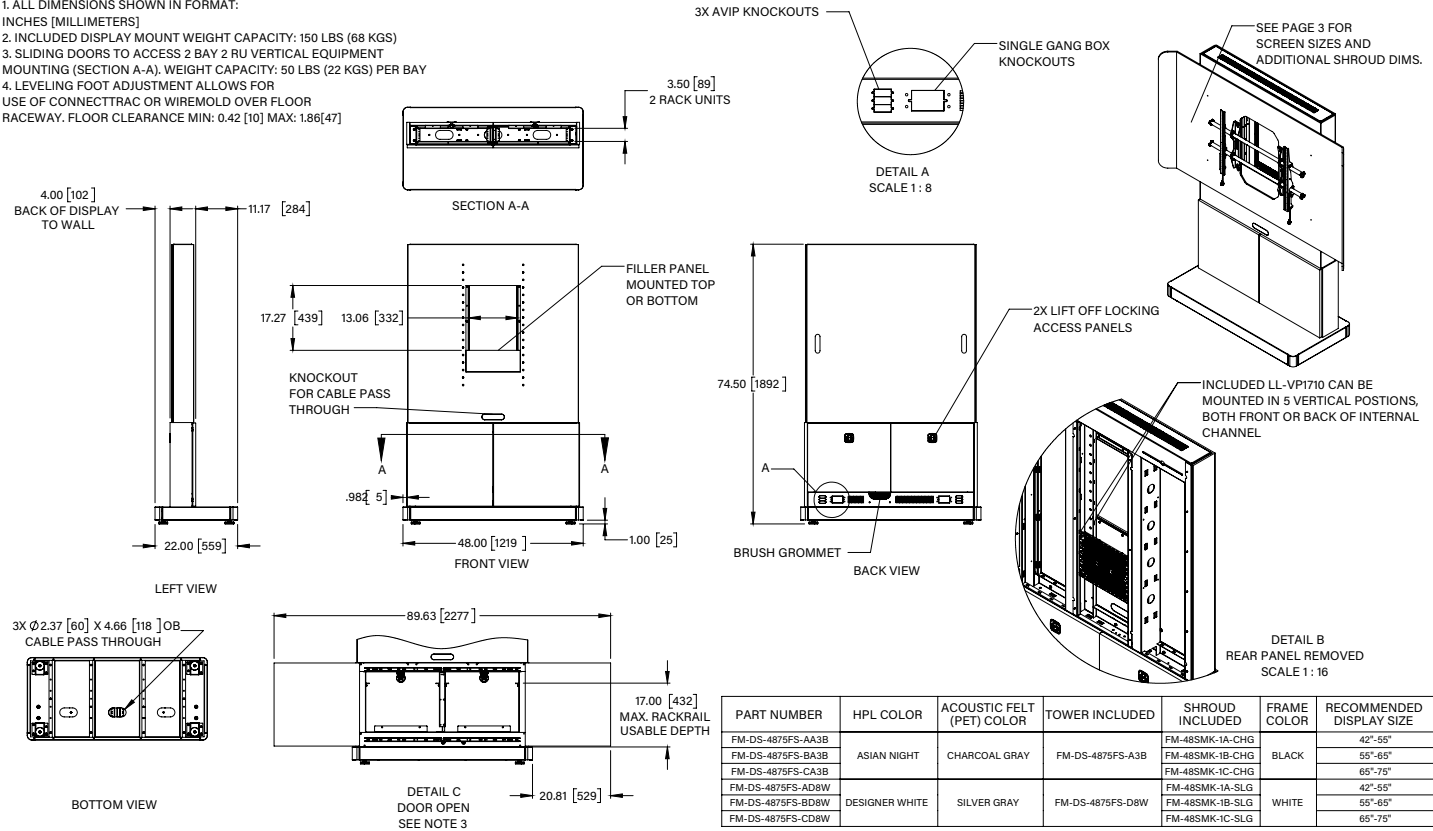
LEGRAND | AV COMMERCIAL BRANDS

C2G | Chief | Da-Lite | Luxul | Middle Atlantic | Vaddio | Wiremold

SPECIFICATIONS

NOTE(S):

1. ALL DIMENSIONS SHOWN IN FORMAT: INCHES [MILLIMETERS]
2. INCLUDED DISPLAY MOUNT WEIGHT CAPACITY: 150 LBS (68 KGS)
3. SLIDING DOORS TO ACCESS 2 BAY 2 RU VERTICAL EQUIPMENT MOUNTING (SECTION A-A). WEIGHT CAPACITY: 50 LBS (22 KGS) PER BAY
4. LEVELING FOOT ADJUSTMENT ALLOWS FOR USE OF CONNECTRAC OR WIREMOLD OVER FLOOR RACEWAY. FLOOR CLEARANCE MIN: 0.42 [10] MAX: 1.86[47]



PART NUMBER	HPL COLOR	ACOUSTIC FELT (PET) COLOR	TOWER INCLUDED	SHROUD INCLUDED	FRAME COLOR	RECOMMENDED DISPLAY SIZE
FM-DS-4875FS-AA3B	ASIAN NIGHT	CHARCOAL GRAY	FM-DS-4875FS-A3B	FM-48SMK-1A-CHG	BLACK	42"-55"
FM-DS-4875FS-BA3B				FM-48SMK-1B-CHG		55"-65"
FM-DS-4875FS-CA3B				FM-48SMK-1C-CHG		65"-75"
FM-DS-4875FS-AD8W	DESIGNER WHITE	SILVER GRAY	FM-DS-4875FS-D8W	FM-48SMK-1A-SLG	WHITE	42"-55"
FM-DS-4875FS-BD8W				FM-48SMK-1B-SLG		55"-65"
FM-DS-4875FS-CD8W				FM-48SMK-1C-SLG		65"-75"

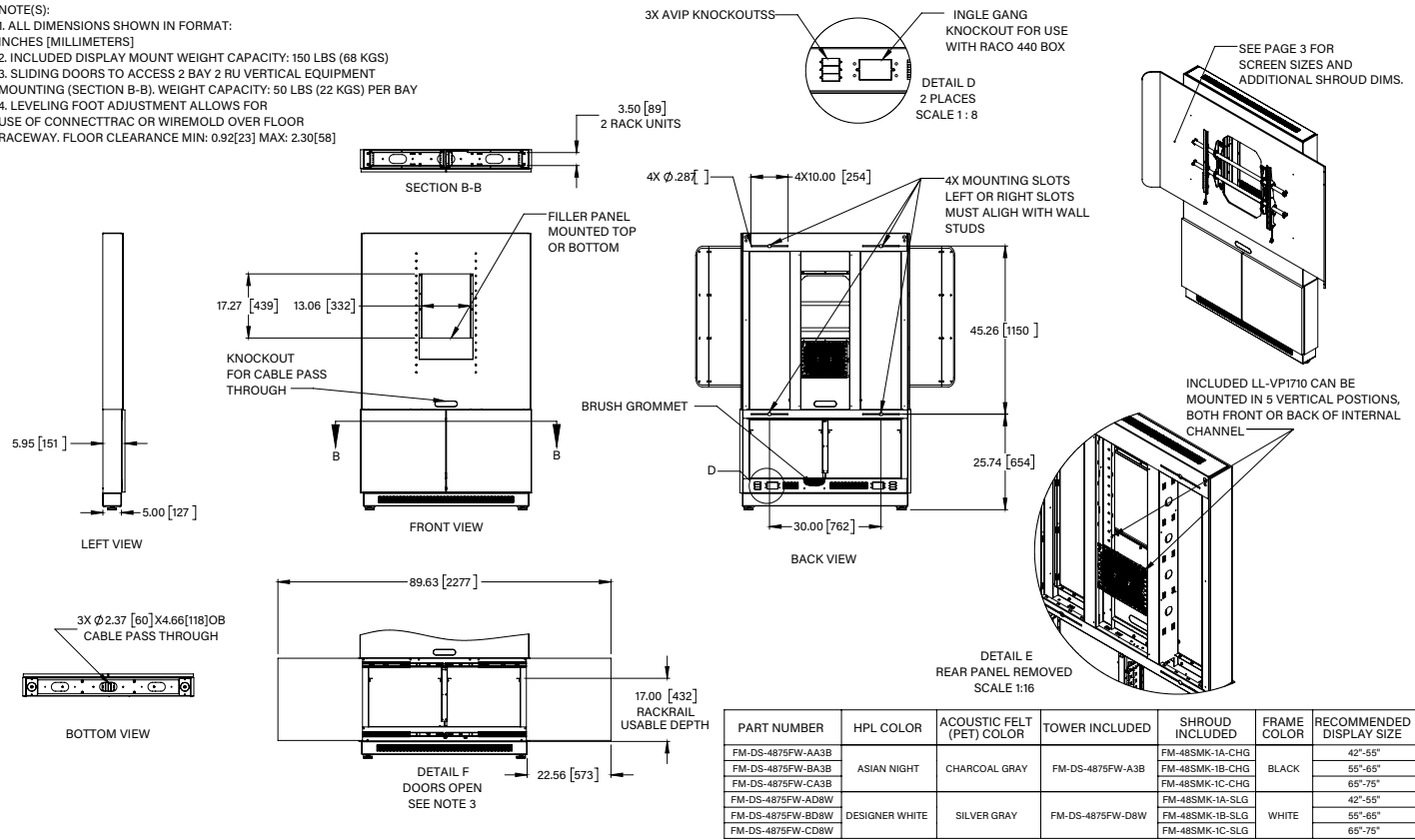
LEGRAND | AV COMMERCIAL BRANDS

C2G | Chief | Da-Lite | Luxul | Middle Atlantic | Vaddio | Wiremold



SPECIFICATIONS

- NOTE(S):  
 1. ALL DIMENSIONS SHOWN IN FORMAT: INCHES [MILLIMETERS]  
 2. INCLUDED DISPLAY MOUNT WEIGHT CAPACITY: 150 LBS (68 KGS)  
 3. SLIDING DOORS TO ACCESS 2 BAY 2 RU VERTICAL EQUIPMENT MOUNTING (SECTION B-B). WEIGHT CAPACITY: 50 LBS (22 KGS) PER BAY  
 4. LEVELING FOOT ADJUSTMENT ALLOWS FOR USE OF CONNECTRAC OR WIREMOLD OVER FLOOR RACEWAY. FLOOR CLEARANCE MIN: 0.92[23] MAX: 2.30[58]



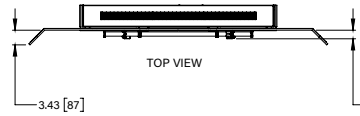
PART NUMBER	HPL COLOR	ACOUSTIC FELT (PET) COLOR	TOWER INCLUDED	SHROUD INCLUDED	FRAME COLOR	RECOMMENDED DISPLAY SIZE
FM-DS-4875FW-AA3B	ASIAN NIGHT	CHARCOAL GRAY	FM-DS-4875FW-A3B	FM-48SMK-1A-CHG	BLACK	42"-55"
FM-DS-4875FW-BA3B				FM-48SMK-1B-CHG		55"-65"
FM-DS-4875FW-CA3B				FM-48SMK-1C-CHG		65"-75"
FM-DS-4875FW-AD8W	DESIGNER WHITE	SILVER GRAY	FM-DS-4875FW-D8W	FM-48SMK-1A-SLG	WHITE	42"-55"
FM-DS-4875FW-BD8W				FM-48SMK-1B-SLG		55"-65"
FM-DS-4875FW-CD8W				FM-48SMK-1C-SLG		65"-75"

LEGRAND | AV COMMERCIAL BRANDS  
 C2G | Chief | Da-Lite | Luxul | Middle Atlantic | Vaddio | Wiremold

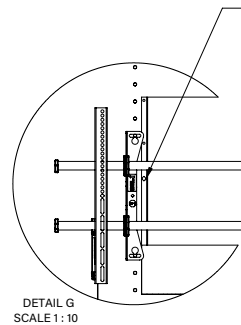


## SPECIFICATIONS

- NOTE(S):
1. ALL DIMENSIONS SHOWN IN FORMAT: INCHES [MILLIMETERS]
  2. CHIEF FIXED FUSION DISPLAY MOUNT WEIGHT CAPACITY: 150LBS (68 KGS)  
COMPATIBLE VESA MOUNTING PATTERNS: 100mm X 100mm - 870mm X 500mm  
WORKS WITH CHIEF FUSION ACCESSORIES, SEE LEGRANDAV.COM FOR COMPLETE LIST OF SKUS
  3. MIDDLE OF DISPLAY HEIGHT(2" INCREMENTS):  
MINIMUM HEIGHT: 44.00 [1117]  
MAXIMUM HEIGHT: 62.00 [1574]
  4. DSA-DW-LLKIT1 INCLUDES 1X LL-VP2110

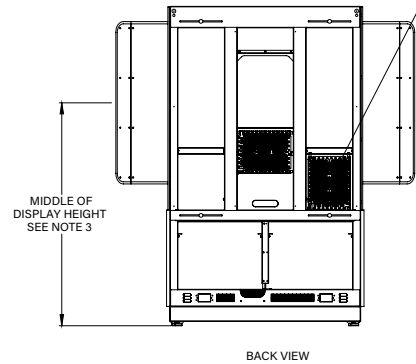
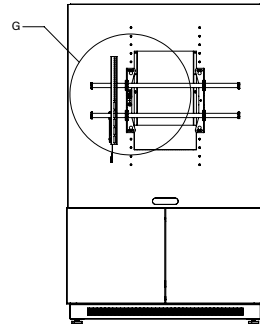
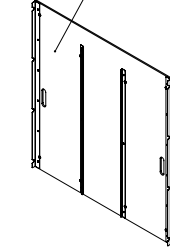
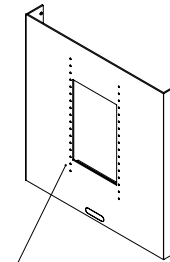


2.02 [51]  
INSIDE SHROUD TO  
INTERFACE SURFACE

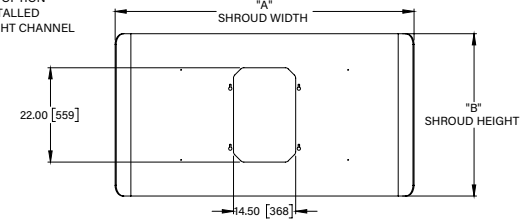


MARKING DENOTES 54.00 [1371]  
MIDDLE OF DISPLAY HEIGHT  
ADJUSTMENTS UP AND DOWN  
IN 2" INCREMENTS

ACOUSTIC FELT (PET) REAR PANEL, MAGNETIC ATTACHMENT  
INCLUDED ONLY ON FREE STANDING SKUS



MIDDLE OF  
DISPLAY HEIGHT  
SEE NOTE 3



PART NUMBER	"A" SHROUD WIDTH	"B" SHROUD HEIGHT	RECOMMENDED DISPLAY SIZE	COLOR
FM-4BSMK-1A-CHG	61.0[1550]	32.9[837]	42"-55"	CHARCOAL GRAY
FM-4BSMK-1B-CHG	69.7[2177]	37.8[962]	55"-65"	
FM-4BSMK-1C-CHG	78.4[1992]	42.7[1086]	65"-76"	
FM-4BSMK-1A-SLG	61.0[1550]	32.9[837]	42"-55"	SILVER GRAY
FM-4BSMK-1B-SLG	69.7[2177]	37.8[962]	55"-65"	
FM-4BSMK-1C-SLG	78.4[1992]	42.7[1086]	65"-76"	

LEGRAND | AV COMMERCIAL BRANDS

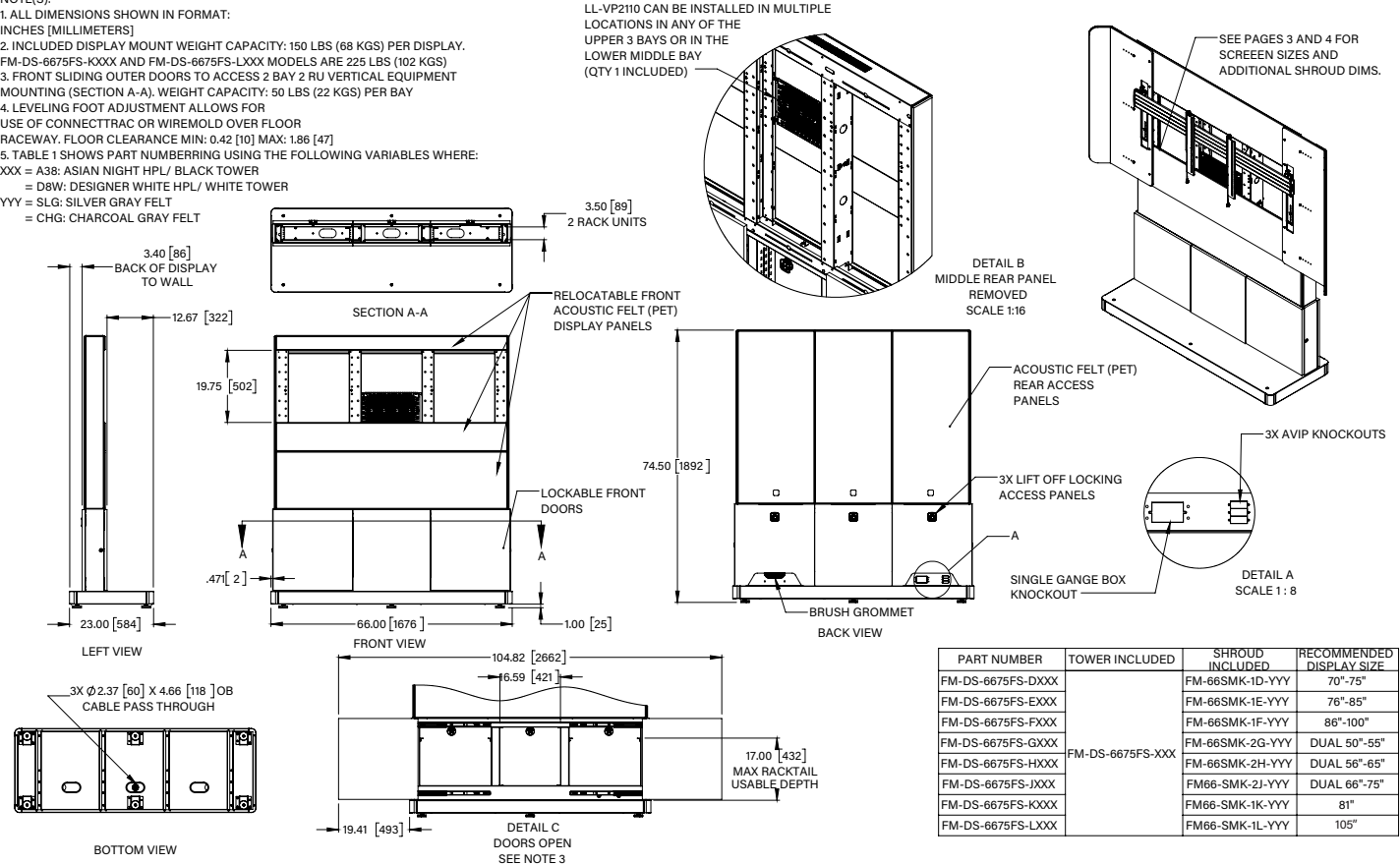
C2G | Chief | Da-Lite | Luxul | Middle Atlantic | Vaddio | Wiremold



SPECIFICATIONS

- NOTE(S):  
 1. ALL DIMENSIONS SHOWN IN FORMAT: INCHES [MILLIMETERS]  
 2. INCLUDED DISPLAY MOUNT WEIGHT CAPACITY: 150 LBS (68 KGS) PER DISPLAY. FM-DS-6675FS-KXXX AND FM-DS-6675FS-LXXX MODELS ARE 225 LBS (102 KGS)  
 3. FRONT SLIDING OUTER DOORS TO ACCESS 2 BAY 2 RU VERTICAL EQUIPMENT MOUNTING (SECTION A-A). WEIGHT CAPACITY: 50 LBS (22 KGS) PER BAY  
 4. LEVELING FOOT ADJUSTMENT ALLOWS FOR USE OF CONNECTRAC OR WIREMOLD OVER FLOOR RACEWAY. FLOOR CLEARANCE MIN: 0.42 [10] MAX: 1.86 [47]  
 5. TABLE 1 SHOWS PART NUMBERRING USING THE FOLLOWING VARIABLES WHERE:  
 XXX = A38: ASIAN NIGHT HPL/ BLACK TOWER  
       = D8W: DESIGNER WHITE HPL/ WHITE TOWER  
 YYY = SLG: SILVER GRAY FELT  
       = CHG: CHARCOAL GRAY FELT

LL-VP2110 CAN BE INSTALLED IN MULTIPLE LOCATIONS IN ANY OF THE UPPER 3 BAYS OR IN THE LOWER MIDDLE BAY (QTY 1 INCLUDED)

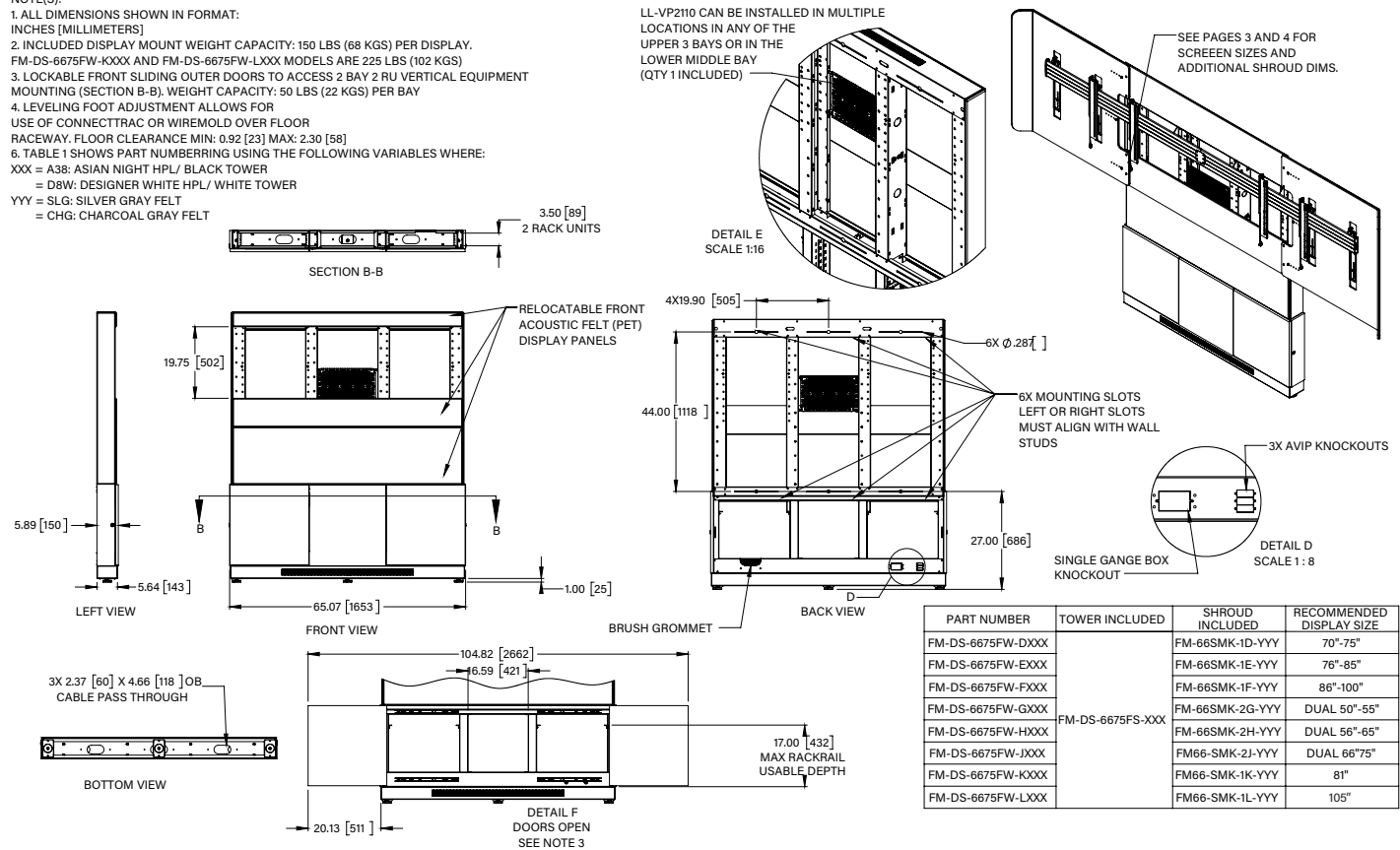


PART NUMBER	TOWER INCLUDED	SHROUD INCLUDED	RECOMMENDED DISPLAY SIZE
FM-DS-6675FS-DXXX		FM-66SMK-1D-YYY	70"-75"
FM-DS-6675FS-EXXX		FM-66SMK-1E-YYY	76"-85"
FM-DS-6675FS-FXXX		FM-66SMK-1F-YYY	86"-100"
FM-DS-6675FS-GXXX		FM-66SMK-2G-YYY	DUAL 50"-55"
FM-DS-6675FS-HXXX	FM-DS-6675FS-XXX	FM-66SMK-2H-YYY	DUAL 56"-65"
FM-DS-6675FS-JXXX		FM66-SMK-2J-YYY	DUAL 66"-75"
FM-DS-6675FS-KXXX		FM66-SMK-1K-YYY	81"
FM-DS-6675FS-LXXX		FM66-SMK-1L-YYY	105"

LEGRAND | AV COMMERCIAL BRANDS  
 C2G | Chief | Da-Lite | Luxul | Middle Atlantic | Vaddio | Wiremold

SPECIFICATIONS

- NOTE(S):
1. ALL DIMENSIONS SHOWN IN FORMAT: INCHES [MILLIMETERS]
  2. INCLUDED DISPLAY MOUNT WEIGHT CAPACITY: 150 LBS (68 KGS) PER DISPLAY. FM-DS-6675FW-KXXX AND FM-DS-6675FW-LXXX MODELS ARE 225 LBS (102 KGS)
  3. LOCKABLE FRONT SLIDING OUTER DOORS TO ACCESS 2 BAY 2 RU VERTICAL EQUIPMENT MOUNTING (SECTION B-B). WEIGHT CAPACITY: 50 LBS (22 KGS) PER BAY
  4. LEVELING FOOT ADJUSTMENT ALLOWS FOR USE OF CONNECTRAC OR WIREMOLD OVER FLOOR RACEWAY. FLOOR CLEARANCE MIN: 0.92 [23] MAX: 2.30 [58]
  5. TABLE 1 SHOWS PART NUMBERING USING THE FOLLOWING VARIABLES WHERE:  
XXX = A38: ASIAN NIGHT HPL/ BLACK TOWER  
= D8W: DESIGNER WHITE HPL/ WHITE TOWER  
YYY = SLG: SILVER GRAY FELT  
= CHG: CHARCOAL GRAY FELT

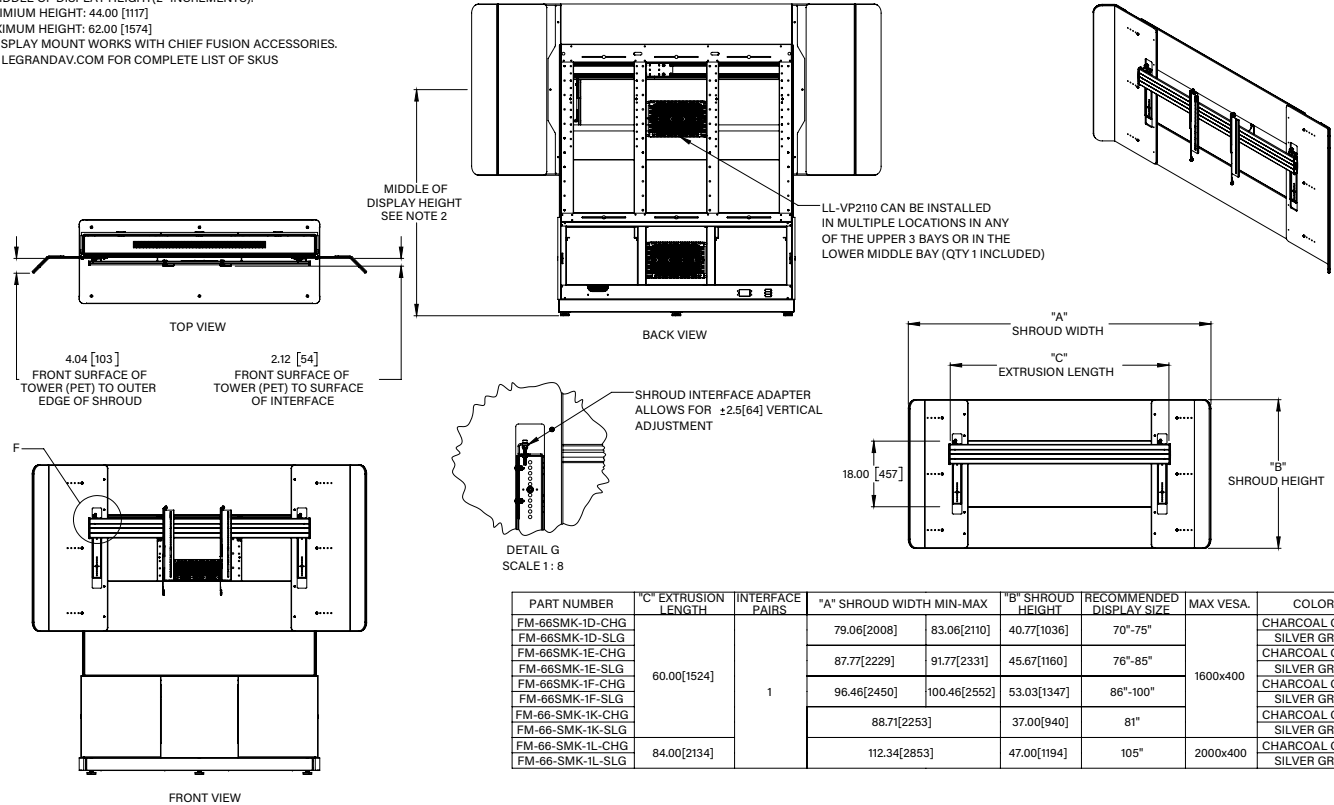


PART NUMBER	TOWER INCLUDED	SHROUD INCLUDED	RECOMMENDED DISPLAY SIZE
FM-DS-6675FW-DXXX		FM-66SMK-1D-YYY	70"-75"
FM-DS-6675FW-EXXX		FM-66SMK-1E-YYY	76"-85"
FM-DS-6675FW-FXXX		FM-66SMK-1F-YYY	86"-100"
FM-DS-6675FW-GXXX		FM-66SMK-2G-YYY	DUAL 50"-55"
FM-DS-6675FW-HXXX	FM-DS-6675FS-XXX	FM-66SMK-2H-YYY	DUAL 56"-65"
FM-DS-6675FW-JXXX		FM66-SMK-2J-YYY	DUAL 66"75"
FM-DS-6675FW-KXXX		FM66-SMK-1K-YYY	81"
FM-DS-6675FW-LXXX		FM66-SMK-1L-YYY	105"

LEGRAND | AV COMMERCIAL BRANDS  
C2G | Chief | Da-Lite | Luxul | Middle Atlantic | Vaddio | Wiremold

SPECIFICATIONS

- NOTE(S):  
 1. ALL DIMENSIONS SHOWN IN FORMAT: INCHES [MILLIMETERS]  
 2. MIDDLE OF DISPLAY HEIGHT(2" INCREMENTS): MINIMUM HEIGHT: 44.00 [1117] MAXIMUM HEIGHT: 62.00 [1574]  
 3. DISPLAY MOUNT WORKS WITH CHIEF FUSION ACCESSORIES. SEE LEGRANDAV.COM FOR COMPLETE LIST OF SKUS



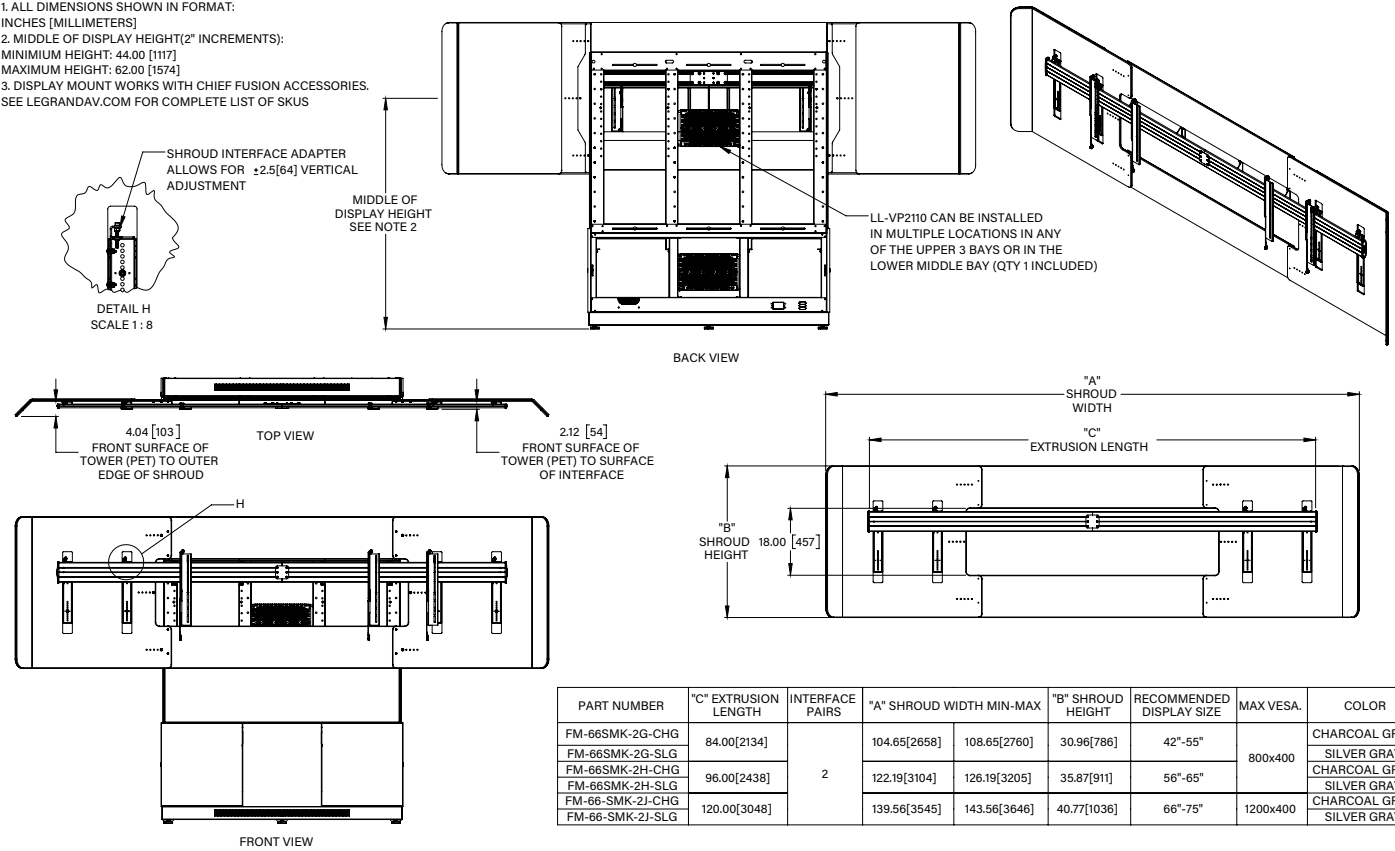
PART NUMBER	"C" EXTRUSION LENGTH	INTERFACE PAIRS	"A" SHROUD WIDTH MIN-MAX	"B" SHROUD HEIGHT	RECOMMENDED DISPLAY SIZE	MAX VESA.	COLOR	
FM-66SMK-1D-CHG	60.00[1524]	1	79.06[2008]	83.06[2110]	40.77[1036]	1600x400	CHARCOAL GRAY	
FM-66SMK-1D-SLG							SILVER GRAY	
FM-66SMK-1E-CHG			87.77[2229]	91.77[2331]	45.67[1160]		76"-85"	CHARCOAL GRAY
FM-66SMK-1E-SLG								SILVER GRAY
FM-66SMK-1F-CHG			96.46[2450]	100.46[2552]	53.03[1347]		86"-100"	CHARCOAL GRAY
FM-66SMK-1F-SLG								SILVER GRAY
FM-66-SMK-1K-CHG	84.00[2134]		88.71[2253]	37.00[940]	81"	2000x400	CHARCOAL GRAY	
FM-66-SMK-1K-SLG							SILVER GRAY	
FM-66-SMK-1L-CHG			112.34[2853]	47.00[1194]	105"		CHARCOAL GRAY	
FM-66-SMK-1L-SLG					SILVER GRAY			

LEGRAND | AV COMMERCIAL BRANDS  
 C2G | Chief | Da-Lite | Luxul | Middle Atlantic | Vaddio | Wiremold



SPECIFICATIONS

- NOTE(S):  
 1. ALL DIMENSIONS SHOWN IN FORMAT: INCHES [MILLIMETERS]  
 2. MIDDLE OF DISPLAY HEIGHT(2" INCREMENTS): MINIMUM HEIGHT: 44.00 [1117] MAXIMUM HEIGHT: 62.00 [1574]  
 3. DISPLAY MOUNT WORKS WITH CHIEF FUSION ACCESSORIES. SEE LEGRANDAV.COM FOR COMPLETE LIST OF SKUS



LEGRAND | AV COMMERCIAL BRANDS  
 C2G | Chief | Da-Lite | Luxul | Middle Atlantic | Vaddio | Wiremold

WHAT GREAT SYSTEMS ARE BUILT ON™ | legrandav.com

USA 800.266.7225 av.middleatlantic.support@legrand.com CANADA 888.766.9770 av.middleatlantic.support@legrand.com

©2023 Legrand AV Inc. 220762\_120-00037 Rev A 10/23 Middle Atlantic is a registered trademark of Legrand AV Inc. All other brand names or marks are used for identification purposes and are trademarks of their respective owners. All patents are protected under existing designations. Other patents pending.