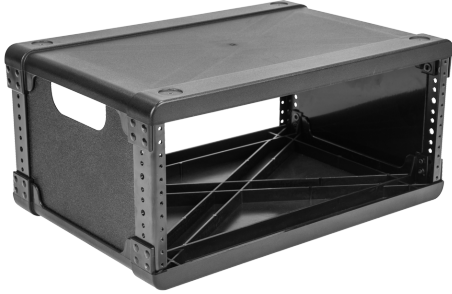




## 4U Injection Molded 13" Deep Rack Frame

3i-M4U13-FRM



SKB's injection molded Fly Rack internal frames are available to order separately in a variety of rack unit sizes and depths. These are perfect for users that already own the Fly Rack system, but would like to have additional rack frames mounted full of equipment ready to be swapped and quickly deployed. These could also be used in a studio setup where the equipment is not meant to be transported. The tops and bottoms of the frames are injection molded to stay lightweight and feature rubber feet that enable stacking to help create a modular setup. The frame has threaded steel front and rear rack rails and comes with rack screws (10-32 thread). Please see the list below to verify which additional rack frame will work with each type of Fly

3i-M2U13-FRM can be used with 3i-2215M82U or

3i-M3U13-FRM can be used with

3i-M4U13-FRM can be used with

3i-M6U13-FRM can be used with

3i-M3U20-FRM can be used with

3i-M6U20-FRM can be used with

PLEASE

Individual Rack Frames are not intended to be transported without the appropriate iSeries case and do not carry a warranty. Please contact SKB with any questions at (800)

FEATURES

---

- Injection molded top and bottom
- Threaded steel front and rear
- Fits in corresponding Fly Rack
- Stackable with other Fly Rack frames for modular

## SPECIFICATIONS

---

Exterior	Hard	-
Rack Units	4	-
Rail To Rail	13 in	33.02 cm
Product Weight	7.64 lb	3.46 kg
Carton Length	24.75 in	62.87 cm
Carton Width	20 in	50.80 cm
Carton Height	14.5 in	36.83 cm
Shipping Weight	9.69 lb	4.39 kg

## AVAILABLE CONFIGURATIONS

---

3i-M4U13-FRM	Black	-
--------------	-------	---